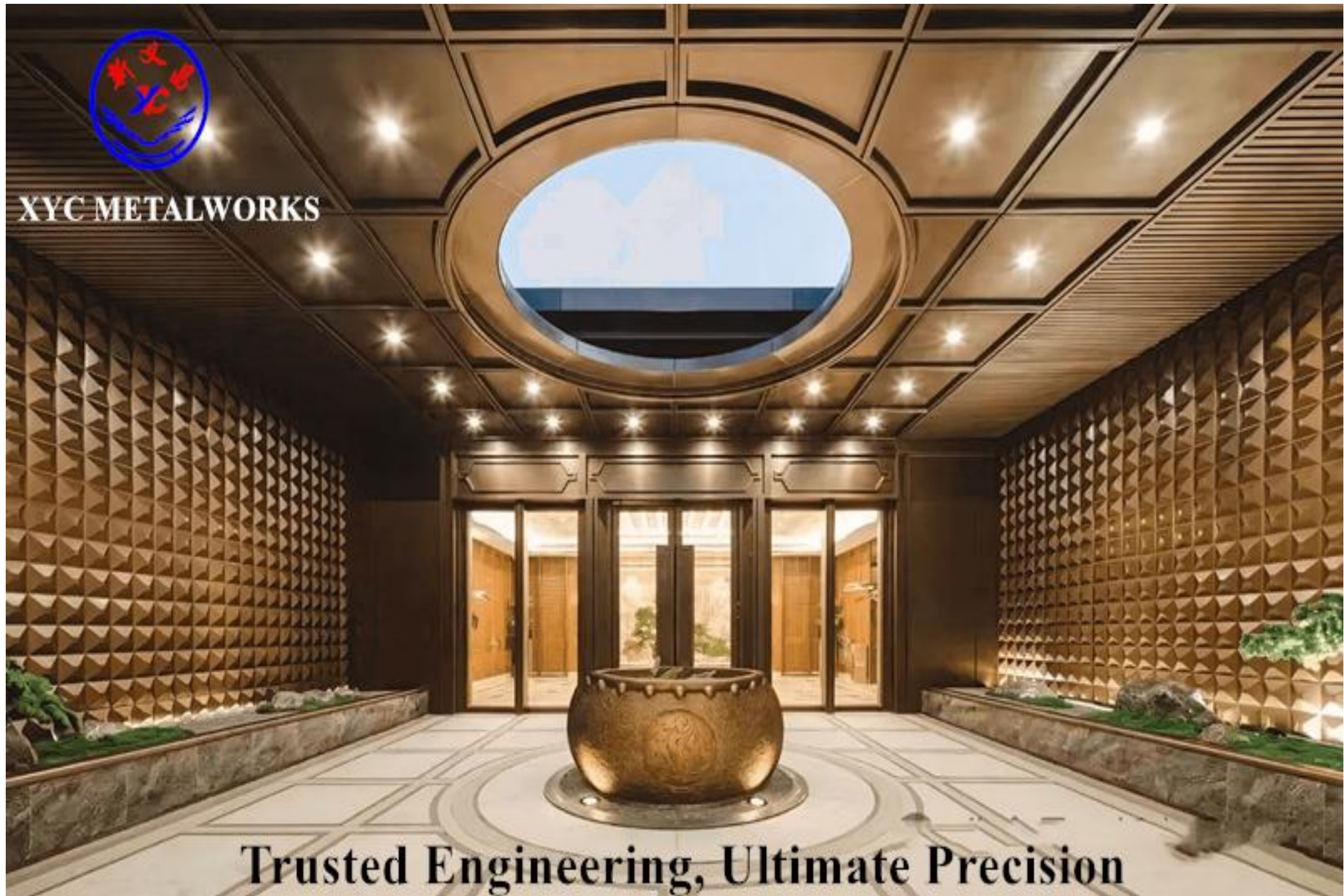




XYC METALWORKS



Trusted Engineering, Ultimate Precision

Trusted Engineering, Ultimate Precision



Company Profile

XYC Metalworks: The Global Authority in Architectural Metal Engineering

Founded in 2000, Occupying a total area of 10,000 square meters, as a leading international manufacturer and your trusted engineering partner, XYC Metalworks specializes in providing **turnkey project solutions** for the world's most ambitious developments.

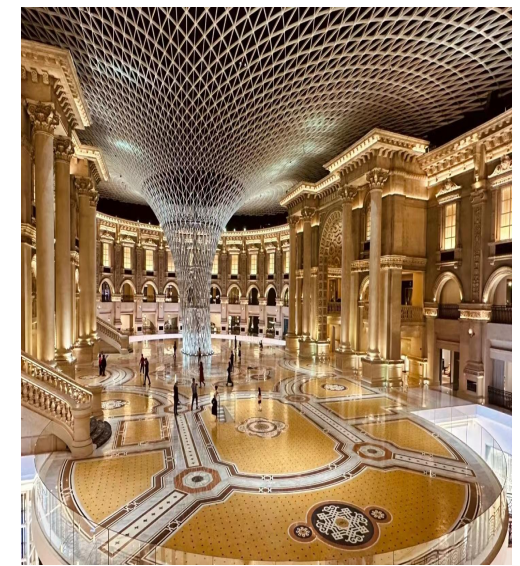
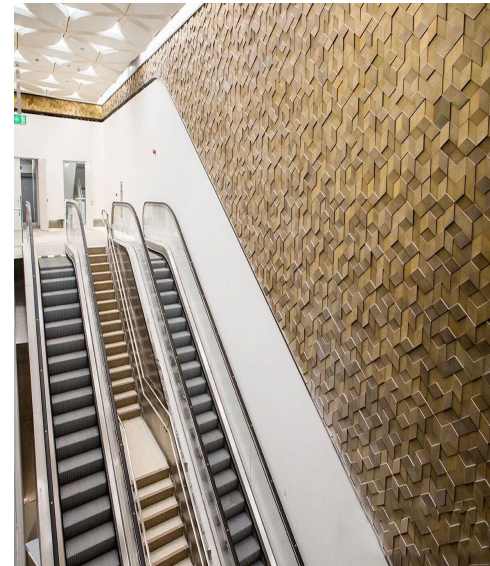
We apply superior engineering expertise to transform architectural metals—including stainless steel, aluminum, and copper—into sophisticated, **custom metal solutions**.

The XYC Advantage is built on our **patented innovation** (over 20 patents), comprehensive **ISO certification**, and a proven track record of successfully executing over **500 landmark projects** globally. We deliver exclusive, verifiable solutions with a commitment to achieving flawless luxury aesthetics for every installation.

Our Capabilities:

- **Laser Cutting Machines**
- **CNC Bending Machine**
- **CNC V-Grooving Machine**
- **CNC Shearing Machines**
- **Milling Machines & Punch Presses**
- **Rolling Machines & Grinding Machines**
- **Laser Welding Machines, etc.**





Today, XYC's customers are from more than 20 countries around the world and Our expertise is proven across five core market sectors:

1. Hospitality (Hotels & Resorts)

The Art of Luxury, The Craft of Precision

2. Residential & Mixed-Use Developments

Enduring Quality, Modern Elegance

3. Transportation (Metro & Airport)

Public Aesthetics, Engineered for Endurance

4. Office, Commercial & Retail Spaces

Defining Brands, Shaping Experiences



ISO Certified
9001,14001,45001



25+ Years
Experience



10,000 sq metre
Facility



20+ Countries
Projects Delivered



20+ patents
owned



500+ Projects
Completed



250+ Workers
In the Factory

Trusted Engineering, Ultimate Precision

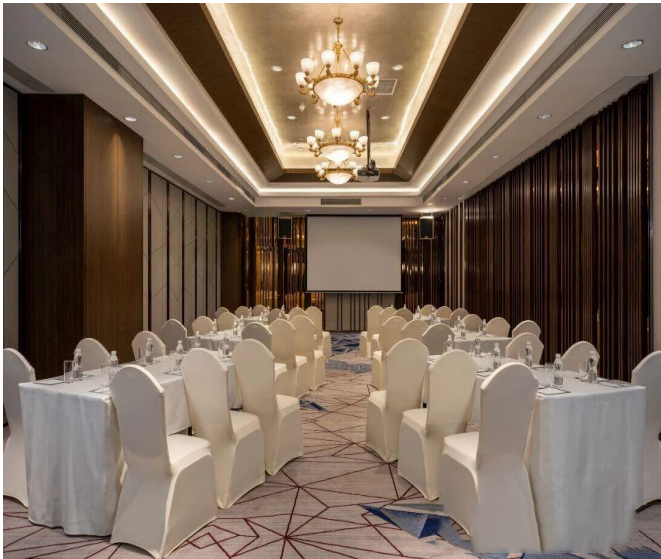
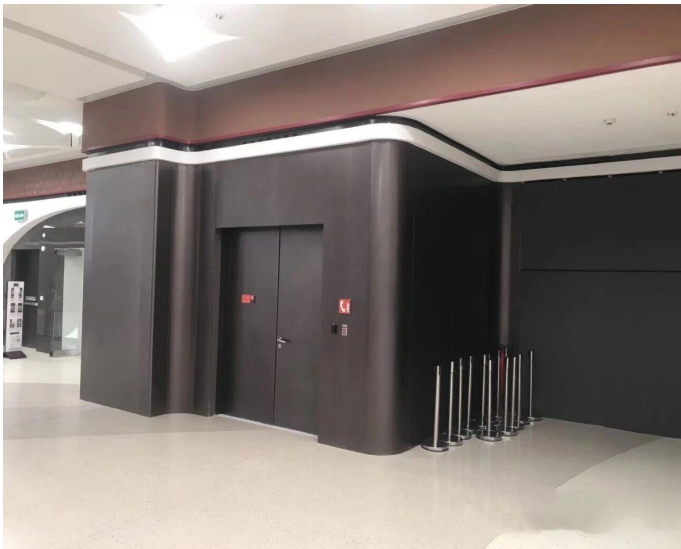
Interior

1. Cladding---Interior Wall Cladding Systems

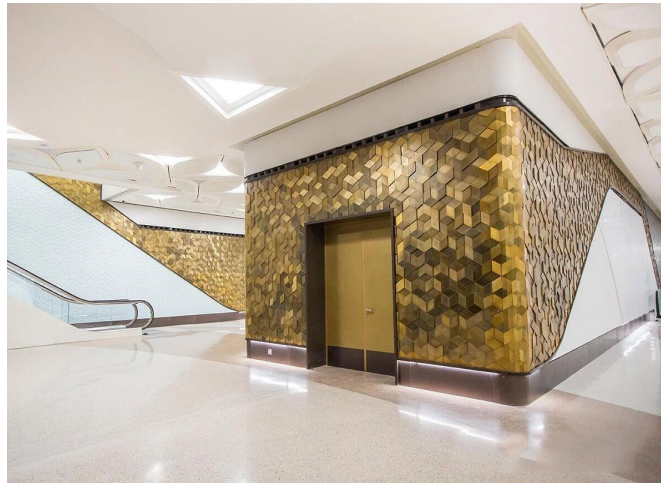
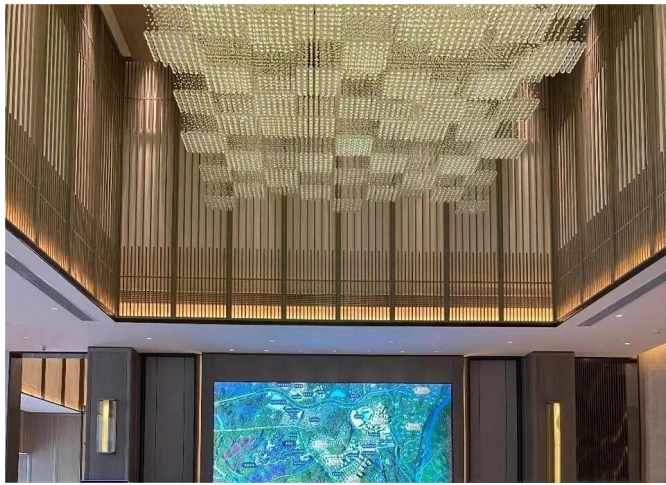
Blending Luxury, Bespoke Design, and Spatial Identity

We deliver precision-crafted architectural metal interior wall and cladding systems designed to fundamentally elevate the aesthetic value and spatial identity of high-end interiors.

From stunning 3D panels to subtle textured finishes, our systems support cutting-edge interior design with robust engineering and long-lasting quality.



Key Advantage	Description
Superior Visual Impact	Metal cladding instantly transforms spaces from standard to exceptional. The luster, texture, and color of finishes like Brushed Brass or Gold Mirror dramatically enhance sophistication.
Decorative & Textural Freedom	Move beyond flat surfaces. We offer Embossed Metal Wall Panels for tactile depth, and Decorative Perforated Metal Panels to create artistic light and shadow play. Our systems are built to be the centerpiece of your design.
Durability & Timeless Elegance	Ideal for high-traffic areas, metal finishes resist daily wear and are easy to clean. This ensures a lasting premium appearance and significantly reduces long-term operational costs.
Integrated System Compatibility	Our cladding is engineered for seamless integration with a building's lighting, HVAC, and signage. This promotes a highly unified and finished visual flow throughout the project.



Customization & Application

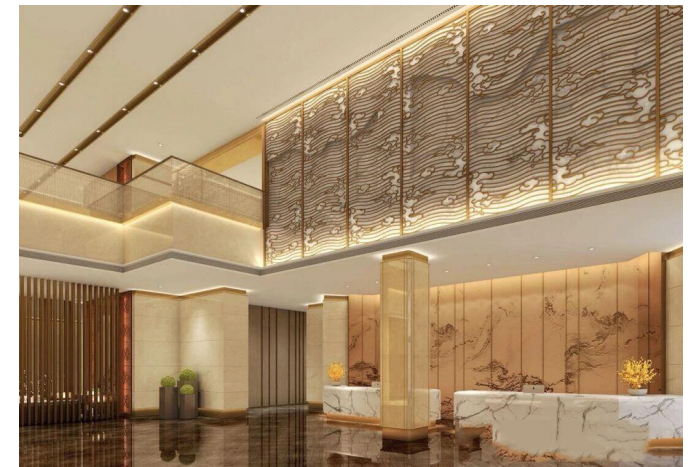
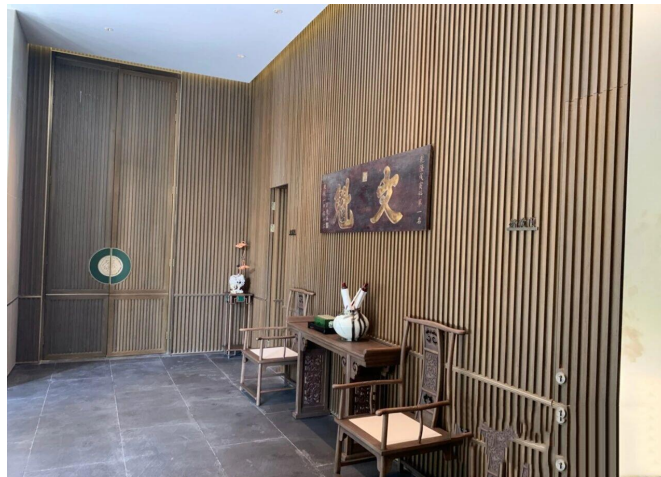
Bespoke Metal Wall Panels

Every interior space is unique. We specialize in fully customized and Bespoke Metal Wall Panels. We tailor the size, shape, color, finish (like PVD Black Brushed), and pattern (including Etched Stainless Steel) to fit your precise design requirements and bring your concepts to life.

Ideal Applications

Our systems are the perfect modern solution for:

- **Luxury Hospitality:** Hotel Lobby Feature Walls and Receptions.
- **High-End Retail:** Flagship stores and luxury boutiques.
- **Residential & Office:** Living Room Metal Accent Walls and Modern Office Interiors.
- **Cultural:** Museums and Galleries.



Material Focus : Common materials include aluminum, stainless steel, and brass/bronze. Key finishes range from Rose Gold Mirror Finish Panels to brushed textures and custom perforations.

Sustainability & Maintenance

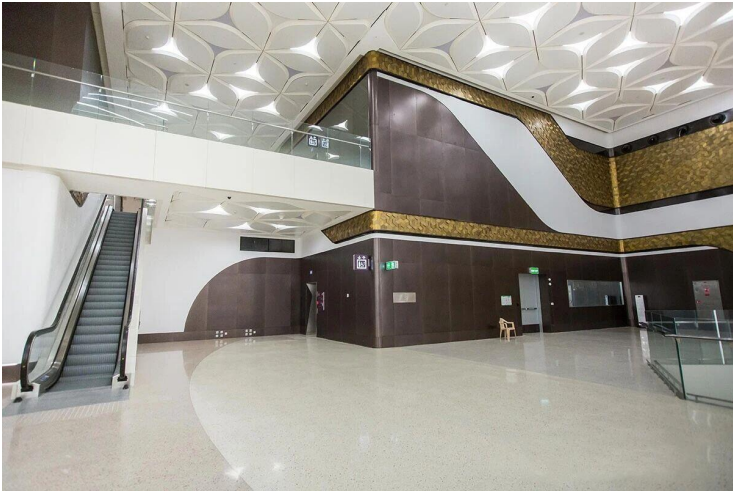
- **Sustainability:** Most metals used (especially aluminum and stainless steel) are **100% recyclable** and have a long lifecycle, contributing to green building certifications.
- **Low Maintenance:** Maintenance is minimal. It typically only requires periodic dusting or wiping with a soft cloth and neutral cleaner.
- **Code Compliance:** The metal itself is non-combustible. We can provide complete systems certified to meet specific **fire-rated classifications** required by building codes.

Trusted Engineering, Ultimate Precision

2. Ceiling---Architectural Metal Ceiling Systems

Bespoke, High-Performance Solutions for Premier Architectural Projects

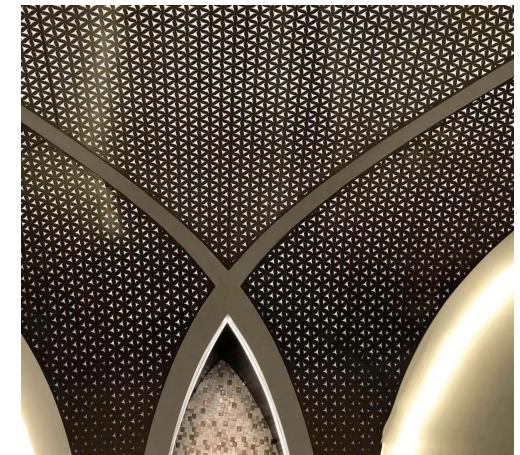
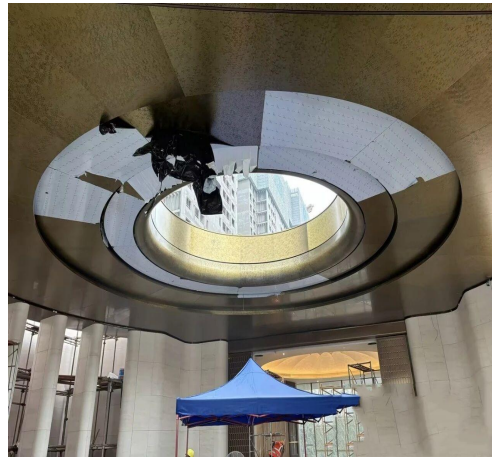
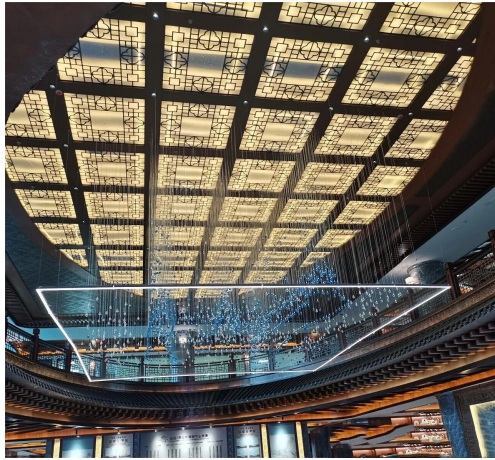
We offer advanced, bespoke metal ceiling systems engineered to enhance both form and function within the world's most demanding architectural environments. Our solutions are engineered partnerships for performance, safety, acoustics, and design harmony. They are specified for premier commercial buildings, luxury interiors, hotels, and high-end retail applications.



Core Benefits: Beyond Traditional Materials

Key Benefit	Description
Superior Performance & Durability	Crafted from premium, corrosion-resistant materials such as aluminum and stainless steel , our ceilings withstand moisture, temperature shifts, and are resistant to mold and insects. This makes them an ideal, long-lasting solution for public spaces and humid environments.
Advanced Acoustic Control	Acoustic panels use perforated surfaces with sound-absorbing insulation or fleece backing. This effectively reduces echo and improves clarity in conference rooms, auditoriums, and open-plan offices.
Seamless Systems Integration	Our ceilings are designed for attractive and seamless integration with LED lights, HVAC diffusers, sprinklers, and speaker grilles, ensuring a clean, uncluttered, and functional layout.
Fire Safety & Sustainability	Metal ceilings are naturally fire-resistant. Additionally, aluminum and steel are 100% recyclable , making our systems eco-conscious and LEED-compliant.
Low Life-Cycle Cost	Though the initial investment may be higher, metal ceiling systems are extremely long-lasting and low-maintenance , offering low life-cycle costs due to few replacements and repairs.

Trusted Engineering, Ultimate Precision



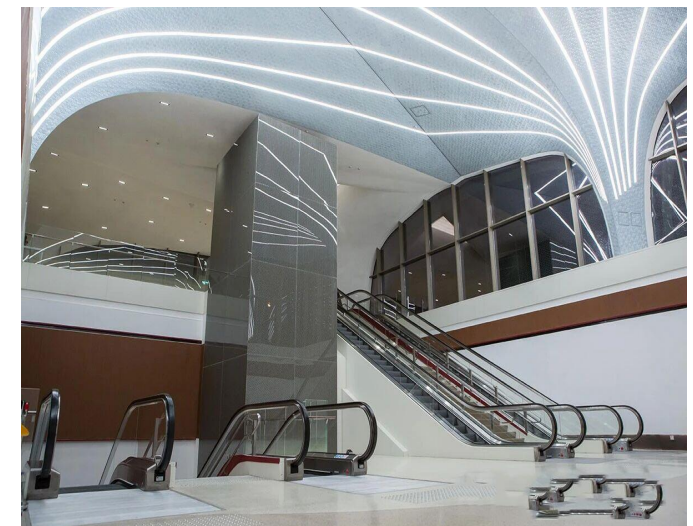
Design Versatility & Customization:

We offer a range of specialized systems, the popular ceiling types as follows:

- **Linear Metal Ceilings:** Provide clean, continuous lines for sleek architectural finishes.
- **Perforated Metal Ceilings:** Fully customizable hole sizes, patterns, and shapes to precisely balance acoustics, air flow, and aesthetics.
- **Acoustic Metal Ceilings:** Engineered with perforations and high-performance backing for effective sound absorption.
- **Expanded Metal Ceilings:** Offer a rugged, sophisticated industrial look with superior structural integrity.

Bespoke Solutions is Our Specialty

We work closely with architects and designers to deliver fully customized ceiling systems tailored for design and performance. Customization includes specific dimensions, forms, shapes (curved, linear, 3D), and the selection of materials like aluminum or stainless steel.



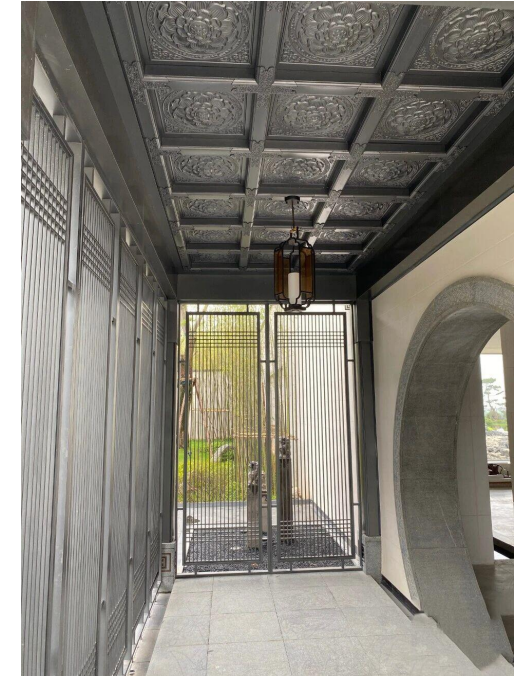
Trusted Engineering, Ultimate Precision

XYC Metalworks Catalog

Available Surface Finishes

We offer a full range of surface finishes:

- **PVD Coating:** A durable coating available in a full spectrum of colors, providing significant design flexibility.
- **Anodized Finish:** Provides a smooth, metallic surface and protection against rust.
- **PVDF Finish:** Offers exceptional resistance to UV rays, weathering, and chemicals.
- **Custom Finishes:** Including bespoke wood-grain options and custom textures to match any design theme or branding.



Project Execution: Installation & Support

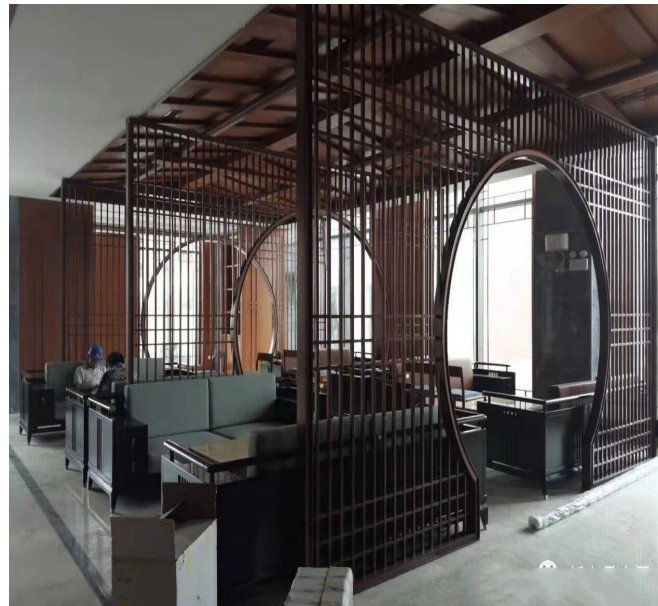
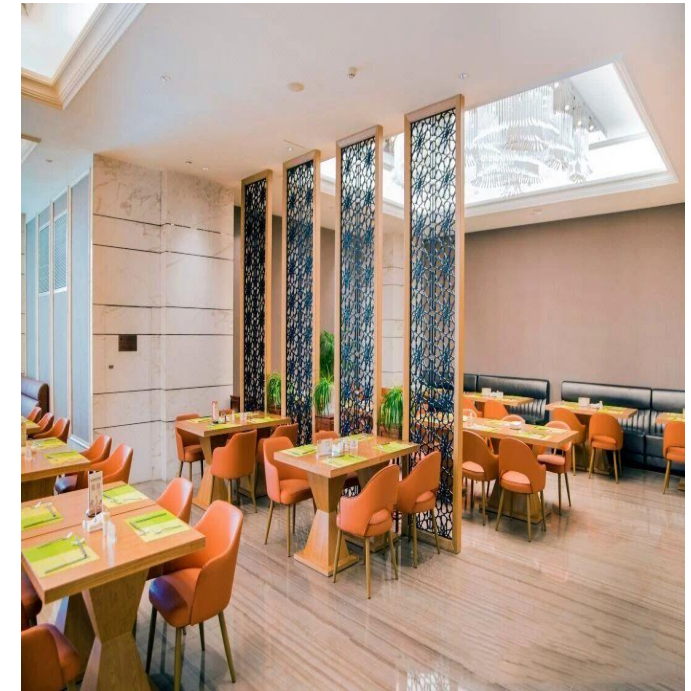
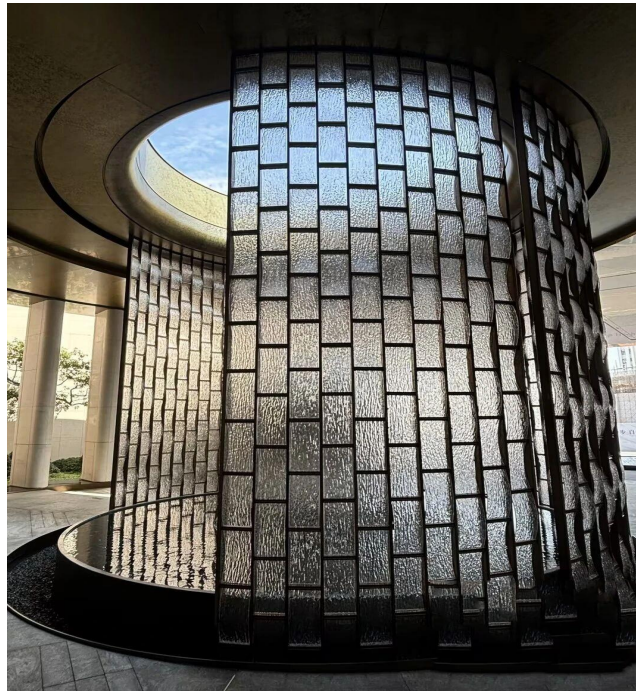
- **Ease of Installation:** Our lightweight, pre-engineered modular panel systems make installation fast, clean, and minimally invasive to other trades on-site.
- **Easy Maintenance Access:** Integrated access panels and well-designed methods allow for easy maintenance of HVAC, lighting, and cabling systems. Most panels require just occasional cleaning.
- **Why Choose Us:** We are acknowledged for top architectural metal fabrication and decades of precision. We offer full customization , use only premium, high-grade materials , and ensure exceptional service and timely help for a smooth project process.

Trusted Engineering, Ultimate Precision

3. partitions & screens

Architectural and Decorative Metal Partitions and Screens are functional yet artistic design elements used to divide spaces, enhance aesthetics, and provide privacy in both **interior and exterior architectural applications**. At XYC Metalworks, we specialize in producing **custom-designed metal partitions and decorative metal screens** made from **stainless steel, aluminum, brass, and corten steel**.

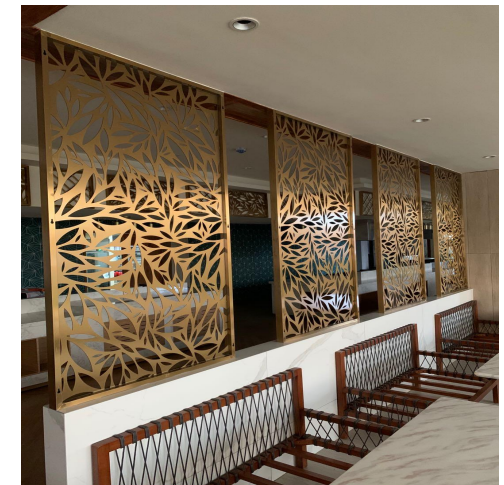
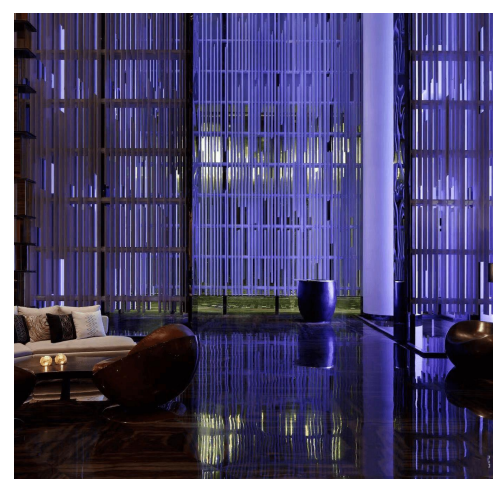
These partitions are precision-engineered using advanced **laser cutting, CNC perforation, and metal fabrication technologies**, ensuring durability, intricate detail, and modern elegance. Whether for **hotel lobbies, office interiors, restaurants, or facade shading systems**, XYC's decorative partitions perfectly combine **functionality, creativity, and craftsmanship**.



Trusted Engineering, Ultimate Precision

Material Options

Material Type	Characteristics	Applications
Stainless Steel (304 / 316)	Corrosion-resistant, strong, elegant surface finishes	Interior & exterior partitions, luxury architecture
Aluminum Alloy	Lightweight, formable, cost-effective	Large decorative panels, ceilings, and facades
Brass / Bronze	Luxurious color tones, high aesthetic value	Boutique interiors, hotels, art installations
Corten Steel	Rust-like patina, excellent weathering properties	Outdoor screens, landscaping, modern architecture



Applications

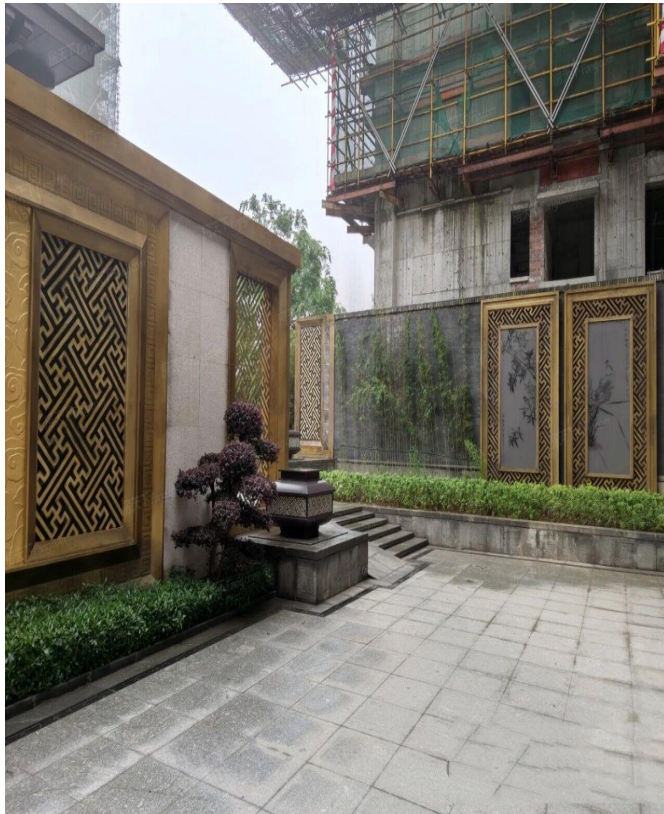
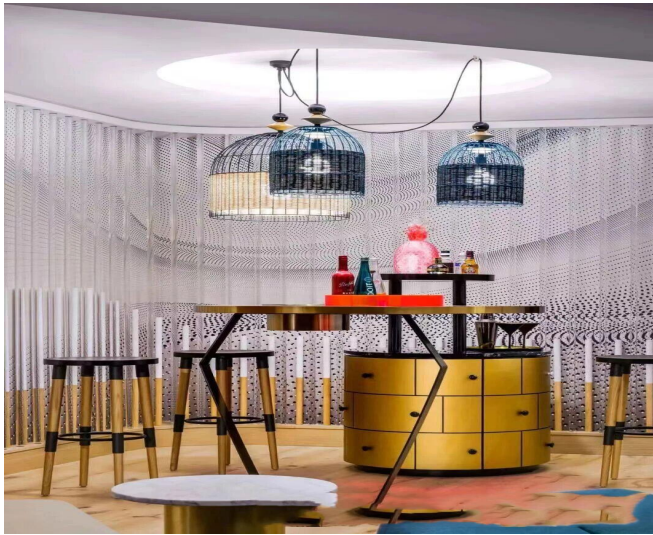
XYC's **decorative metal partitions and screens** are widely used in both **residential** and **commercial environments**, offering stylish and practical space division. Typical applications include:

- **Interior Spaces:** Office partitions, hotel lobbies, restaurant dividers, retail display walls, and home interiors.
- **Exterior Facades:** Privacy screens, balcony separators, exterior shading panels, and courtyard decorations.
- **Public & Hospitality Areas:** Airports, museums, shopping centers, and hospitality venues seeking modern design elements with lasting durability.
- **Architectural Accents:** Used as **feature walls**, **cladding panels**, **railing infills**, or **decorative ceilings**, enhancing both functionality and visual appeal.

Surface Finishes

- Brushed / Satin Finish
- Mirror Polish
- Powder Coating
- PVDF Coating
- Anodizing
- PVD Titanium Coating
- Custom Paint or Dual-Tone Surface Finishes

Each finish enhances the screen's **appearance, texture, and corrosion resistance**, ensuring it complements the surrounding design environment.



Customization & Design

At XYC Metalworks, we provide **fully customized solutions** to match any architectural concept.

Clients can submit **CAD drawings, pattern references, or concept sketches**, and our engineers will produce **detailed fabrication drawings** before manufacturing.

Customization options include:

- Panel size and thickness
- Pattern geometry and open area ratio
- Mounting or framing structure
- Surface treatment and color tone
- Integration with lighting or branding features

4. colume covers



Stainless Steel Column Covers, Cladding & Architectural Metal Wraps

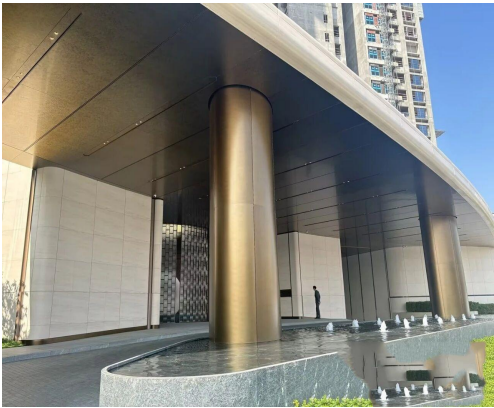
Crafted from Premium Stainless Steel for Lasting Elegance and Performance

Stainless steel column covers—also known as **column wraps**, **pillar covers**, or **metal column cladding**—seamlessly combine structural functionality with sleek, modern design. Fabricated from high-grade stainless steel, these **column enclosures** are engineered to withstand corrosion, impact, and weather extremes, delivering enduring performance in both indoor and outdoor environments⁵. Whether enhancing lobbies, facades, or transportation hubs, **stainless steel column cladding** provides an elegant solution that elevates architectural appeal while protecting structural columns. Available in custom dimensions, finishes, and styles (including **round, square, or custom shapes**), they are an essential component in today's design-forward construction and **custom metal fabrication** projects.

Trusted Engineering, Ultimate Precision

Metal column covers are more than just **architectural cladding**—they transform exposed structural elements into refined design statements.

Available in stainless steel, aluminum, copper, and brass, these **pillar wraps** combine aesthetic beauty with practical durability. Architects and designers can choose from a variety of finishes, patterns, and **decorative textures** to achieve a bold, customized look that complements both contemporary and traditional spaces.



Specification	Detail
Standard	"JIS, AISI, ASTM, GB, DIN, EN"
Thickness	1.2 mm – 3.0 mm (Customizable)
Diameter	100 – 2000 mm (Customizable)
Length	Up to 6000 mm
Tolerance	±1%
Grades Available	"304, 316, 201, 430"

Specification	Detail
Processing	Cold Rolled
Surface Finishes	"No. 2B, No. 4, No. 8, Satin, Brushed, Mirror"
Color Options	"Silver, Black, Champagne, Copper, Gold, Rose Gold"
Edge Finish	"Mill, Slit"
Applications	Interior & Exterior Architectural Decoration, Column Cladding, Pillar Wraps
Packaging	PVC + Waterproof Paper + Wooden Crate

5. elevator decoration

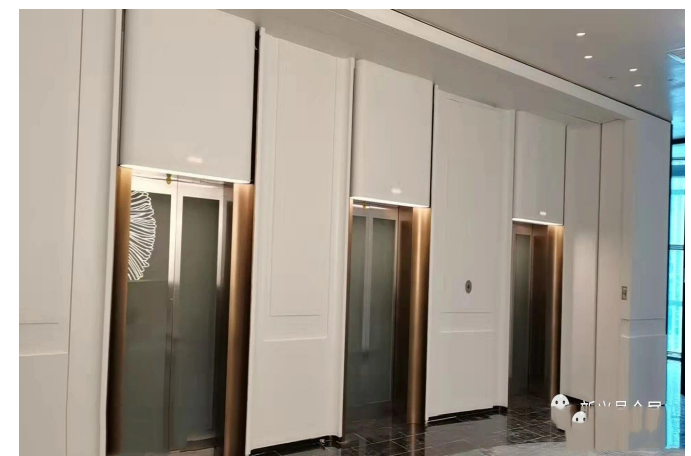
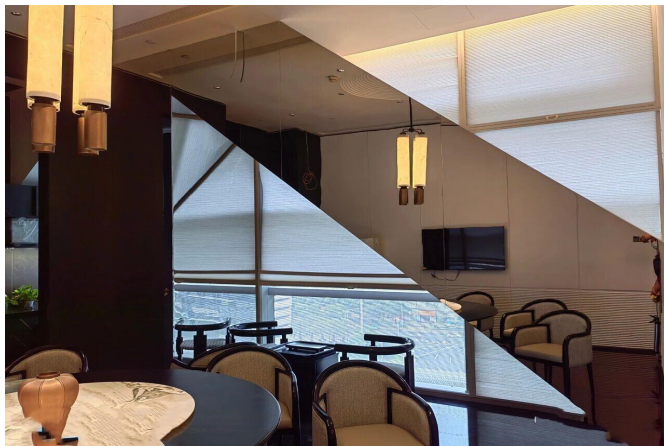
Elevator & Escalator Cladding Solutions

Architectural Metalwork for Vertical Transportation

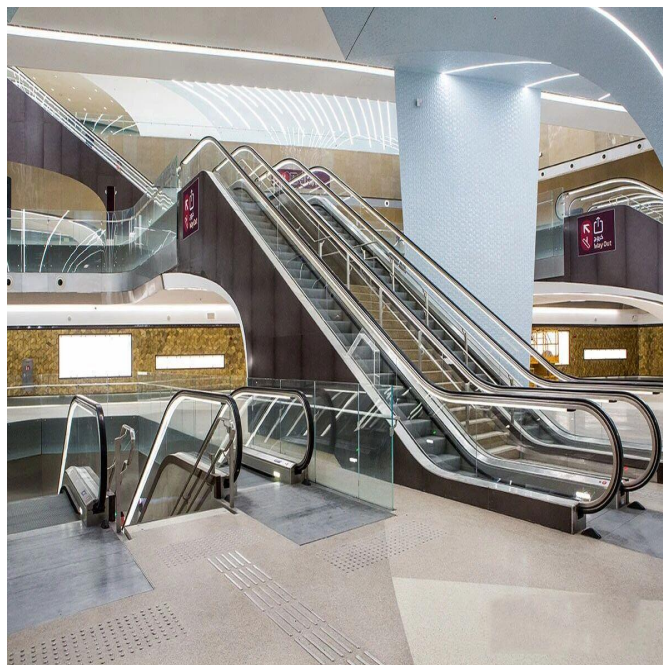
Durable, Hygienic, and Visually Refined Stainless Steel Components

Elevating the Passenger Experience We offer a premium range of stainless steel components designed to enhance both the functionality and aesthetics of elevator interiors and escalator systems. Whether for commercial towers, healthcare centers, or residential developments, our panels provide a refined, modern surface that is tough enough to withstand high-traffic environments while maintaining a professional ambiance.

From elevator cabins to escalator balustrades, our solutions are compatible with modular and custom-fit systems for both new builds and retrofits.



Trusted Engineering, Ultimate Precision



Key Features:

- **Exceptional Durability:** Engineered to resist corrosion, scratches, dents, and daily wear, ensuring a reliable, blemish-free appearance for years.
- **Hygienic & Safe:** Naturally antibacterial, non-porous, and non-absorbent surfaces that are easy to sanitize—ideal for sterile environments like hospitals.
- **Timeless Aesthetics:** A variety of finishes (Mirror, Satin, Embossed) to complement both modern and classical architectural styles.
- **Eco-Friendly:** 100% recyclable materials that support LEED building standards and reduce lifecycle costs.

Technical Specifications

Specification	Detail
Standard	GB/T, ASTM, JIS, EN
Material	Stainless Steel Sheet (Grades 304 / 316)
Technique	Cold Rolled
Thickness	0.8 mm – 3.0 mm
Width	30 mm – 1850 mm (Customizable)
Length	1220 mm – 3000 mm (Customizable)
Tolerance	±1%
Finish Types	Mirror, Matte, Brushed, Satin, Etched, Embossed, PVD
Color Options	Silver, Black, Gold, Rose Gold, Champagne, Blue, etc.
Edge	Mill, Slit
Applications	Residential or commercial building; Elevator wall panels, door panels, ceiling panels, escalator wall cladding, architectural trim.
Packaging	PVC + Waterproof Paper + Wooden Crate / Package



Trusted Engineering, Ultimate Precision

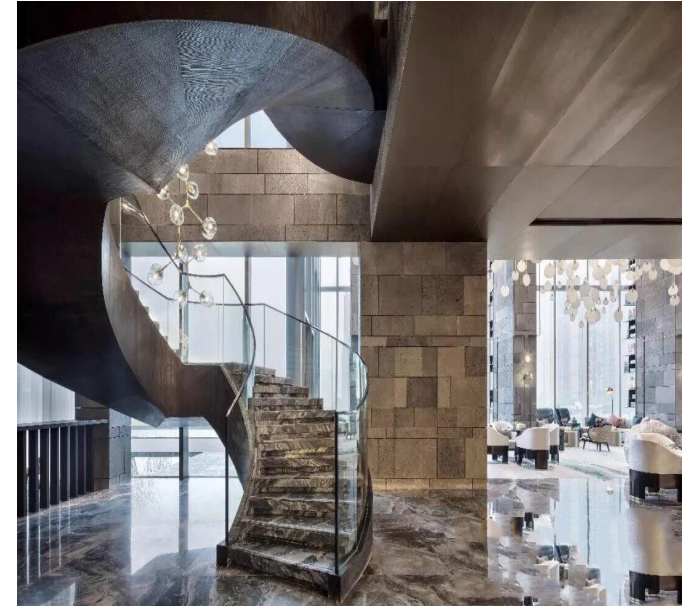
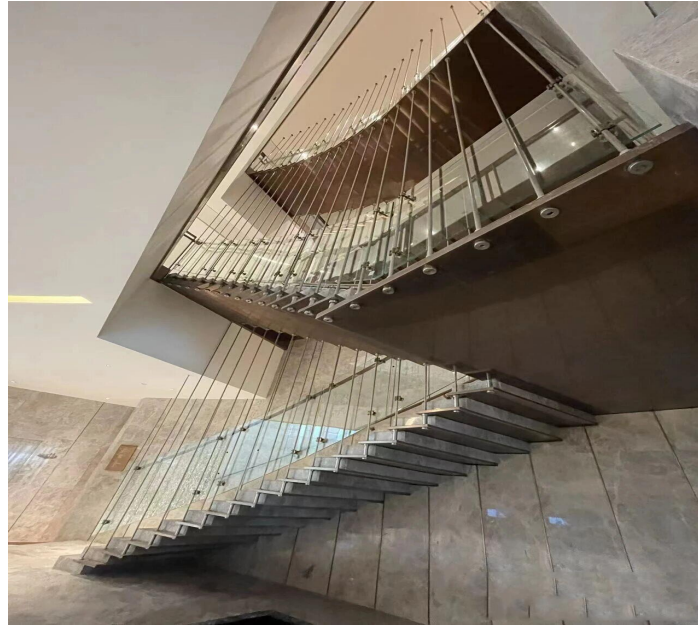
6. Staircase & Railing Systems

Blending Patented Strength, Elegance, and Enduring Performance -- Custom-engineered solutions that unite safety with sophistication for modern spaces.

Elevating Spaces with Structural Artistry

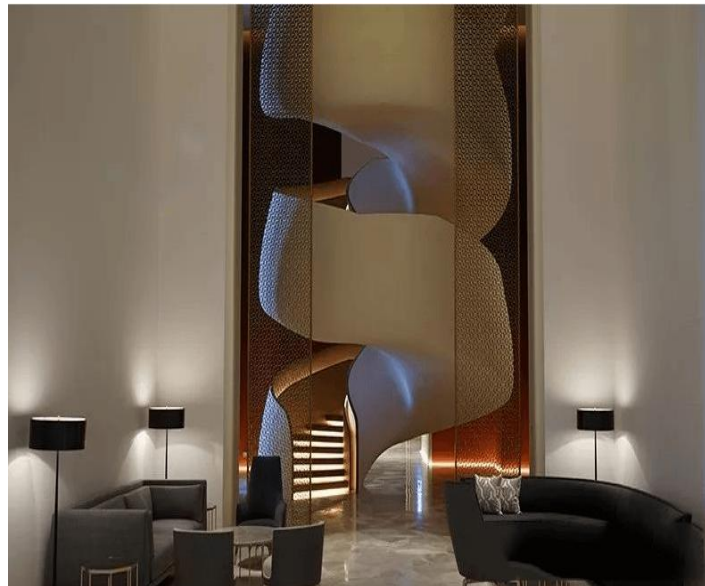
Architectural staircases and stainless steel railing systems are far more than structural barriers—they are central design statements. Whether ascending through a grand lobby or providing critical safety across balconies, our systems lend both structural integrity and defining visual harmony to a building.

Moving beyond traditional wood or concrete, our modern systems elevate spaces with engineered stainless steel stringers, sleek posts, and integrated glass balustrades. Known for outstanding corrosion resistance and low maintenance, they offer long-lasting value for both new builds and renovation projects.



1. Architectural Staircases

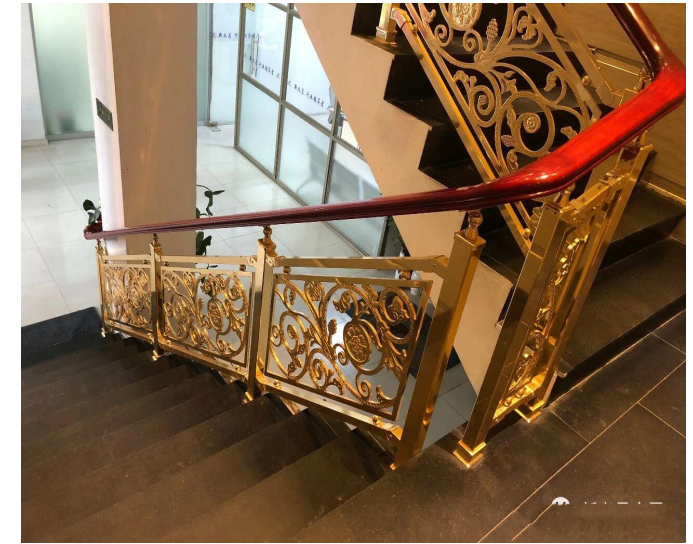
- **Floating (Cantilevered):** Minimalist treads that appear to "float," ideal for modern interiors.
- **Spiral & Helical:** Space-saving spiral designs or grand, sweeping helical curves that serve as a focal point.
- **Straight & Industrial:** Custom stringer designs ranging from bold industrial to sleek minimalist profiles.



Trusted Engineering, Ultimate Precision

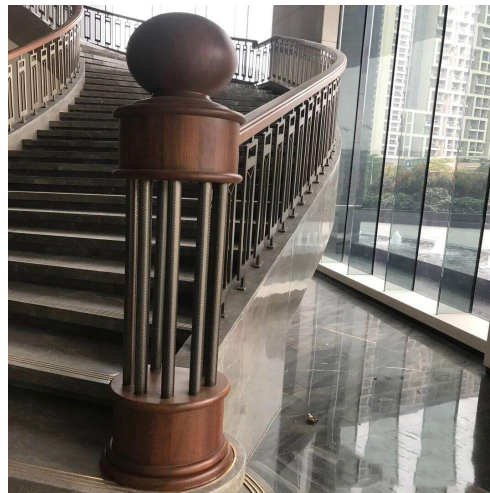
2. Railing & Balustrade Systems

- **Frameless Glass Railing:** Toughened glass balustrades offering modern transparency and seamless architectural integration.
- **Wire Cable Railing:** Tensioned wire infill for a minimalist look with unobstructed views, popular for outdoor decks.
- **Wall-Mounted & Public Railings:** Robust handrails for corridors, ramps, and urban walkways.

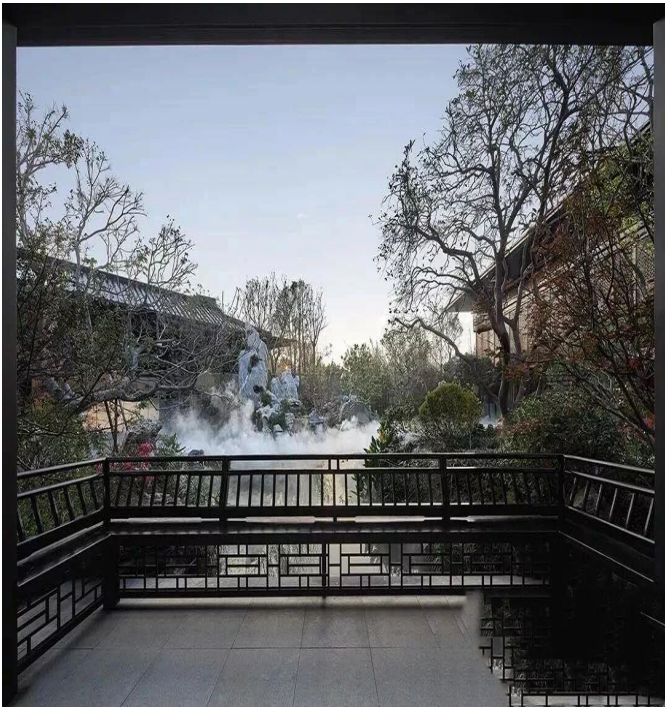


Key Features:

- **Patented Engineering:** Our proprietary fabrication technology creates an exceptionally robust structure that exceeds safety and load standards.
- **Rapid Assembly:** The patented, pre-fabricated design significantly streamlines on-site installation, saving labor time and project costs.
- **Superior Durability:** Crafted from Grade 304 or 316 stainless steel, our systems are highly resistant to corrosion, moisture, and weathering—ideal for coastal and outdoor use.
- **Code Compliance:** All systems are engineered to meet or exceed international building codes regarding height, load-bearing strength, and safety.
- **Low Maintenance:** A simple cleaning regimen preserves the finish for decades, reducing long-term operational costs.

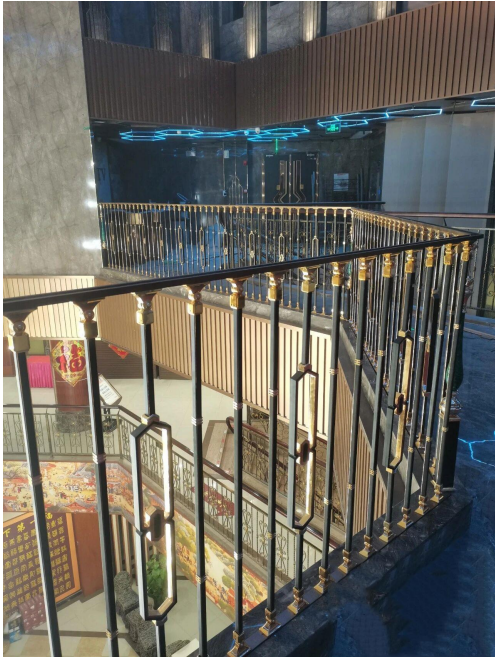
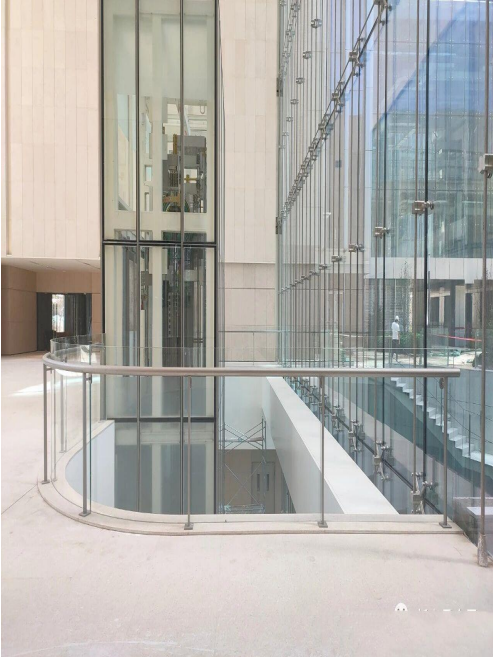


Trusted Engineering, Ultimate Precision



Technical Specifications

Feature	Specification
Material Grade	Stainless Steel Grade 304 (Interior) / 316 & 316L (Exterior/Marine)
Stair Types	Floating, Spiral, Helical, Straight, Industrial
Railing Infill	Tempered/Laminated Glass, Tensioned Wire, Perforated Metal, Mesh
Tread Options	Structural Glass, Hardwood (Oak, Walnut), Stone, Stainless Steel
Finishes	Mirror, Brushed, PVD, Bead Blasted, Powder Coated (RAL Colors)
Installation	Patented Pre-fabricated Assembly

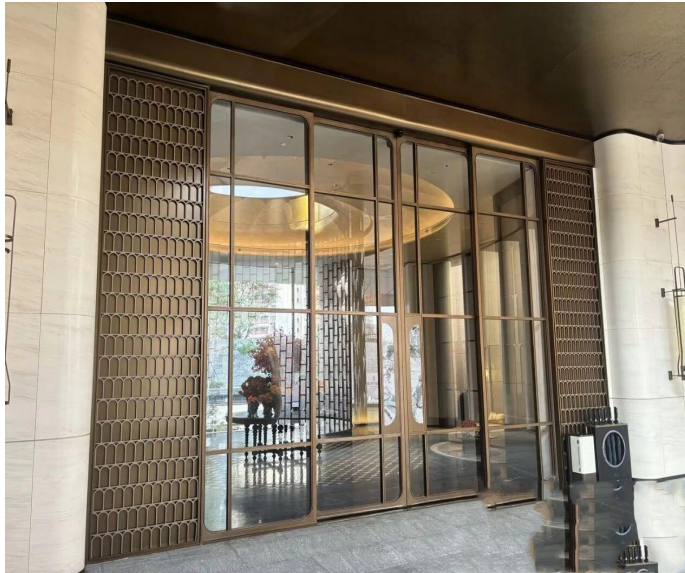


7. doors and handles

Architectural Stainless Steel Doors & Hardware ---Uniting Bespoke Design, Flawless Function, and Modern Elegance

Architectural stainless steel interior doors and custom pull handles are far more than mere functional elements; they are transformative design statements that define a space's character. From grand pivot doors at an entrance to sleek sliding systems for modern offices, our solutions unite robust performance with sophisticated aesthetics.

Moving beyond traditional wood, XYC Metalworks leverages the timeless beauty of stainless steel to create systems renowned for exceptional durability, hygiene, and premium aesthetics—the definitive choice for luxury residential and high-end commercial interiors.



1: Door Systems ---Architectural Door Systems

Custom-built to your specifications, offering solutions for every application from grand entrances to private spaces.

Product Breakdown:

- **Stainless Steel Pivot Doors:** Create a stunning, modern entrance with a floor-to-ceiling pivot door. Engineered for a smooth, balanced swing, they are ideal for main entryways or grand room dividers.
- **Sliding & Barn Doors:** Maximize space with sleek stainless steel sliding doors or modern barn doors, perfect for partitioning large, open-plan spaces.
- **Pocket Door Systems:** A minimalist solution where the door disappears seamlessly into the wall. Ideal for en-suites and utility areas where floor space is at a premium.
- **Hinged & Feature Doors:** Timeless full-frame doors with options for glass infills, laser-cut patterns, or perforated metal screens to serve as central art pieces.



Trusted Engineering, Ultimate Precision

2: Handle Collection---Custom Door Handles & Pulls

The perfect finishing touch. Our hardware is fabricated from solid stainless steel for a tactile, high-quality feel.

Hardware Styles:

- **Ladder Style Pull Handles:** Our most popular choice. These long bar handles add vertical emphasis and a modern touch, available in round, square, or rectangular profiles.
- **Flush & Recessed Pulls:** A minimalist, zero-profile solution for sliding and pocket doors, integrating seamlessly into the door face.
- **Offset & C-Shape Pulls:** Ergonomic designs providing comfortable grip and knuckle clearance, ideal for high-traffic commercial doors.
- **Bespoke Fabrication:** We create bespoke handles in any shape or size, including custom logo etching to match your brand identity.



Tech & Customization

Custom Fabrication & Finishes We control every aspect of fabrication to meet exact project requirements.

Materials: Premium Grade 304 Stainless Steel for a flawless, consistent finish.

Infill Options: Tempered glass (clear/frosted), laminated glass, perforated metal, or wood inserts.

Surface Finishes:

- **Brushed (Satin):** Subtle linear grain, hides fingerprints.
- **Mirror Polish:** High-gloss, chrome-like reflection for luxury.
- **PVD Coating:** Durable metallic colors including Gold, Rose Gold, Bronze, and Black.
- **Powder Coating:** Unlimited RAL color palette.

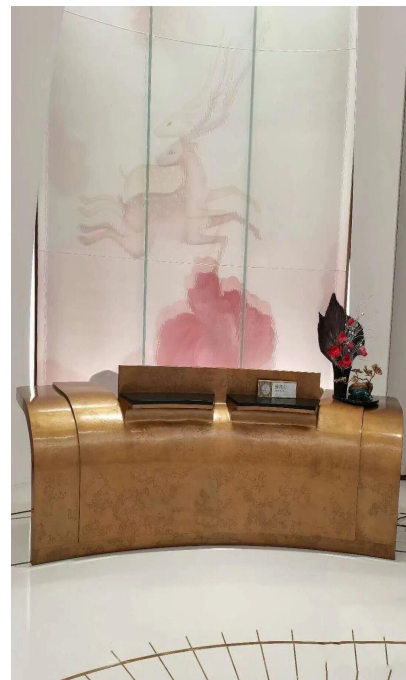
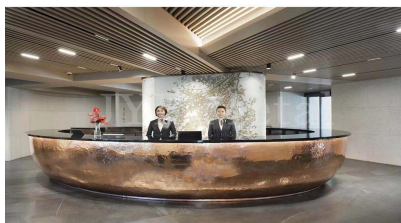
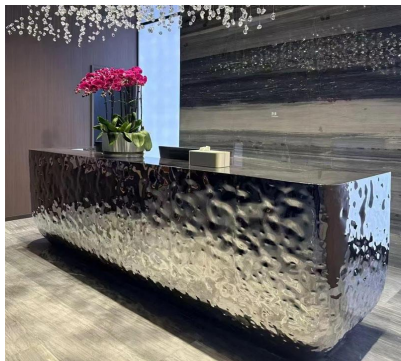
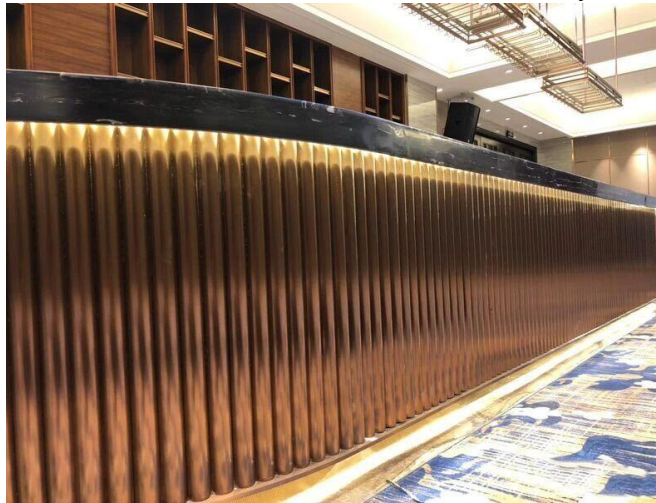
8. reception& display furniture

Bespoke Interiors & Hospitality--Crafting Statement Pieces for Luxury Spaces

Precision-engineered stainless steel furniture and architectural metalwork that defines brand identity.

In any luxury hotel, corporate lobby, or high-end retail space, custom metalwork is the defining touchpoint of the brand's physical identity. From the monolithic reception desk a guest first approaches to the elegant vanity frame in their suite, these elements require flawless execution.

At XYC Metalworks, we specialize in transforming high-traffic areas into works of art. Moving beyond traditional wood or stone, our bespoke stainless steel solutions offer superior durability, hygiene, and a sleek, modern aesthetic that withstands the demands of commercial environments.



1: Grand Spaces

Subsection Title: Lobby & Reception Furniture **Description:** The centerpiece of your interior. We fabricate fully custom designs from your architect's drawings, ensuring perfect brand integration.

Product Highlights:

- **Custom Reception Desks:** Whether a minimalist floating counter or a complex curved station, we fabricate desks with integrated stone countertops, LED lighting, and cable management. Modular pre-fabrication ensures seamless on-site assembly.
- **Stainless Steel Planters:** Define spaces with large-scale built-in planters or freestanding decorative pots. Available in any shape, these durable containers add a biophilic touch to lobbies and corridors.
- **Architectural Light Boxes & Signage:** Illuminate your brand with custom-fabricated stainless steel frames featuring laser-cut logos and internal back-lighting.

Trusted Engineering, Ultimate Precision

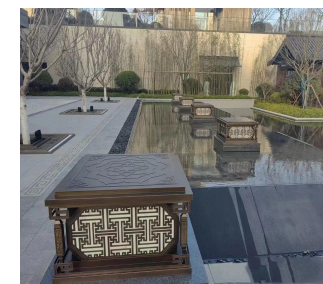
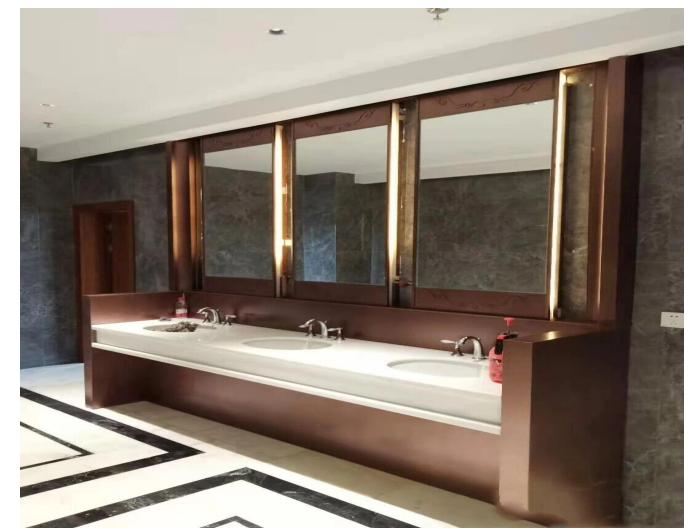
2: Hospitality & Living

Hospitality, Retail & Washroom Collections

Combining function with high-end design, our components elevate the user experience in retail boutiques, bars, and hotel suites.

Product Breakdown:

- **Wine Cabinets & Displays:** A fusion of function and art. We build PVD-coated stainless steel frames (e.g., Gold or Black) with integrated glass doors and illuminated shelving for wine cellars and luxury retail displays.
- **Wash Basin Stands & Vanity Frames:** The new standard for luxury washrooms. Fabricated from corrosion-resistant Grade 304 or 316 stainless steel, these frames support marble basins and resist moisture and wear.
- **Hotel Room Furnishings:**
 1. **Luggage Racks:** Durable, custom designs ranging from brushed steel to elegant PVD gold.
 2. **Mirror Frames:** Large-format frames for lobbies or backlit mirrors for vanity areas.



Trusted Engineering, Ultimate Precision

9. Signage

Precision-Crafted Metal Signage & 3D Letters-- Defining brand identity through masterfully fabricated stainless steel, brass, and illuminated signage.

Architectural metal signage is the primary element of spatial navigation and brand identity, translating a vision into a tangible statement of quality. From intricate interior lettering to large-scale exterior pylons, XYC Metalworks specializes in the custom fabrication of high-end signage that commands attention.

We utilize premium materials—stainless steel, brass, bronze, and aluminum—combined with precision laser cutting and advanced PVD finishing to create durable, impact-resistant signs for corporate, hospitality, and retail environments.



Technical Specifications

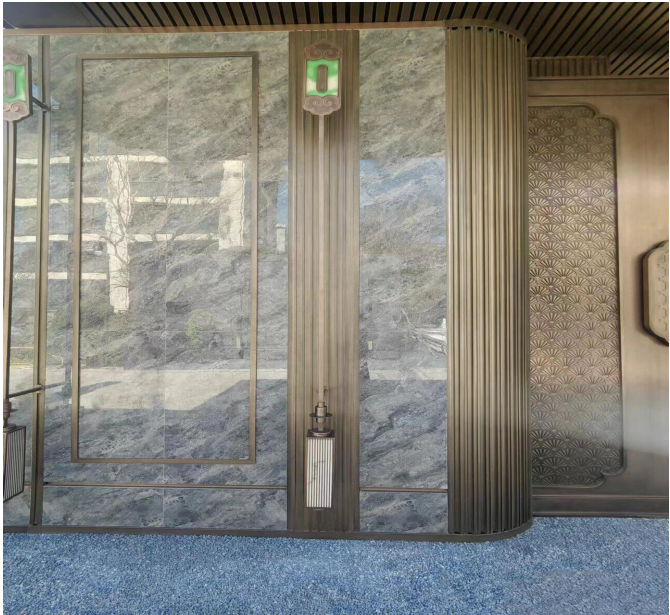
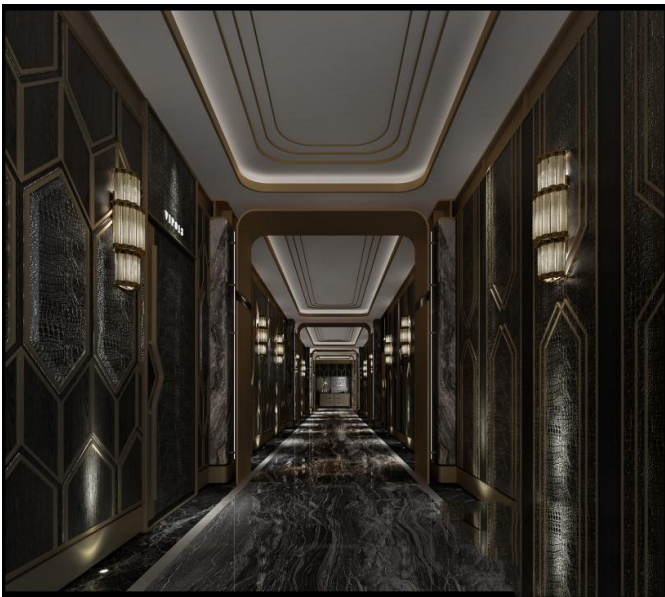
Feature	Specification
Material Options	Stainless Steel (Grades 304 / 316), Solid Brass, Bronze, Aluminum.
Fabrication Styles	3D Built-up (Fabricated) Letters, Solid Laser-Cut Flat Letters, Reverse Channel (Backlit).
Standard Finishes	Brushed Satin (Horizontal/Vertical), 8K Mirror Polish, Antique Patina (Brass/Bronze), Anodizing (Aluminum).
Color Coatings	PVD Titanium Coating (Gold, Rose Gold, Bronze, Black), RAL Powder Coating, PVDF.
Mounting Methods	Standoff (Floating), Flush Mount, Raceway (Pre-wired box), Freestanding Pylon.
Compliance	ADA-compliant tactile and Braille capabilities for accessibility

10. Trims-Decorative Metal Trims

Precision Profiles for Distinctive Interiors-- Custom-fabricated stainless steel, brass, and aluminum trims that define lines and protect edges with luxury.

Decorative architectural trims are the essential finishing elements that transform a good design into a masterpiece. They create clean lines, protect vulnerable edges, and introduce a layer of metallic luxury to walls, floors, and joinery.

At XYC Metalworks, we specialize in the precision fabrication of custom profiles—from minimalist T-bars to complex Art Deco inlays. Using advanced CNC V-grooving technology, we achieve flawless, sharp 90-degree corners that set our products apart from standard rounded profiles. Whether you need PVD Gold tile dividers or Antique Brass wall accents, we deliver the perfect shape and finish for your project.



Technical Specifications

Feature	Specification
Materials	Stainless Steel (304/316), Solid Brass, Aluminum Alloy.
Standard Lengths	2.44m (8ft), 3.05m (10ft), or Custom Lengths to minimize joints.
Fabrication	CNC V-Grooving, Bending, Laser Cutting.
Finishes	PVD (Gold, Black, Bronze, etc.), Mirror, Brushed, Antique, Powder Coat (RAL).
Installation	Tile-In, Surface Mount (Adhesive/Screw), Recessed Channel.

Trusted Engineering, Ultimate Precision

Profile Shapes & Fabrication

We fabricate all standard and custom profiles to your exact dimensions, ensuring a seamless fit for every application.

Key Profile Types:

- **T-Profiles (T-Bars):** Essential for transitions between floor materials or as decorative wall inlays to create geometric patterns.
- **U-Channels:** Versatile profiles used for framing, recessed wall grooves, or capping the edges of glass and panels.
- **L-Angles (Corner Guards):** Robust protection for wall corners and columns, providing a clean, finished edge that resists impact.
- **Custom Geometric Inlays:** Bespoke shapes fabricated to your drawings, allowing for unique Art Deco designs and complex joinery details.

The V-Grooving Advantage: Unlike standard press-brake bending which results in rounded edges, our **CNC V-Grooving** process removes material before bending. This allows us to create **perfectly sharp, zero-radius corners**, a critical detail for high-end luxury aesthetics.



Colors & Finishes

Our extensive range of finishes allows for complete creative freedom. Our in-house PVD line ensures consistent, durable color.

Signature Finishes:

- **PVD Titanium Coating:** Extremely durable and scratch-resistant. Available in **Gold, Rose Gold, Black, Champagne, and Bronze**.
- **Mirror Polish (8K):** A flawless, reflective finish available in natural stainless or PVD colors for a jewel-like accent.
- **Brushed (Satin):** A subtle, linear grain that diffuses light and hides fingerprints—our most popular choice for floor trims.
- **Antique Brass & Bronze:** chemically patinated finishes that offer a timeless, classical elegance.

二. Exterior



Trusted Engineering, Ultimate Precision

1. cladding & Facade

Engineering the Envelope of Modern Architecture--Custom-engineered perforated screens, 3D formed panels, and structural glass curtain walls.

The architectural facade is the building's identity; its skin, character, and primary interface with the environment. At XYC Metalworks, we specialize in the engineering and fabrication of custom-designed, high-performance facade systems.

We transform architectural visions into reality using premium stainless steel, aluminum, glass, and Corten steel. By integrating advanced engineering with aesthetic precision, we deliver complete building envelope solutions that offer superior durability, weather performance, and unparalleled visual impact.



Facade Systems & Capabilities

Bespoke Cladding Solutions---From intricate decorative screens to monumental structural glazing, our systems are engineered to withstand wind loads and manage solar gain.

Core Systems:

- **Perforated Metal Screens:** Customizable perforation patterns control natural light and reduce glare while maintaining views. These screens act as effective sunshades and distinctive visual identifiers.
- **Custom-Formed 3D Panels:** We utilize 3D modeling and CNC forming to create flowing, organic-shaped panels and complex curves. Ideal for futuristic station concepts and cultural centers.
- **Structural Glass Curtain Walls:** Complete non-structural envelope systems that hang from the building's frame. We specialize in large-span glass envelopes for malls, airports, and museums.
- **Rainscreen Systems:** High-performance cladding consisting of an outer panel, a ventilated cavity, and an inner barrier. This design efficiently manages moisture and improves thermal performance.



Trusted Engineering, Ultimate Precision

Material Versatility---We offer a vast palette of materials durable enough for any environment, including coastal and high-traffic zones.

Material Options:

- **Aluminum Alloy (PVDF Coated):** Lightweight and highly formable, making it ideal for complex 3D shapes and large-scale rainscreens. Finished with PVDF (Polyvinylidene Fluoride), the industry gold standard that resists UV fading and chalking.
- **Stainless Steel (304 / 316L):** Offers extreme durability and high strength. We recommend Grade 316L for coastal projects to ensure superior corrosion resistance.
- **Corten Steel (Weathering Steel):** Provides a unique, stable rust-like patina that requires no painting, perfect for rustic or industrial aesthetics.
- **Wood-Grain Metal:** Aluminum cladding finished to provide the warm look of timber but with the durability and fire resistance of metal.



Technical Specifications & Applications

Feature	Specification
Primary Materials	Aluminum Alloy, Stainless Steel (304/316L), Corten Steel, Glass
System Types	Rainscreen Cladding, Curtain Wall, Sunshade Louvers
Fabrication	Laser Cutting, CNC Forming, 3D Stamping, Perforation
Finishes	PVDF Coating (20+ year warranty), Anodized, Powder Coat
Performance	Engineered for Wind Load, Thermal Insulation, Solar Control
Applications	Commercial High-Rise: Corporate headquarters and office parks.
	Public & Transport: Airports, train stations, and stadiums.
	Cultural: Museums and art centers featuring complex perforated facades.
	Hospitality: Luxury hotels and shopping mall atriums.

2. Canopies & Awnings

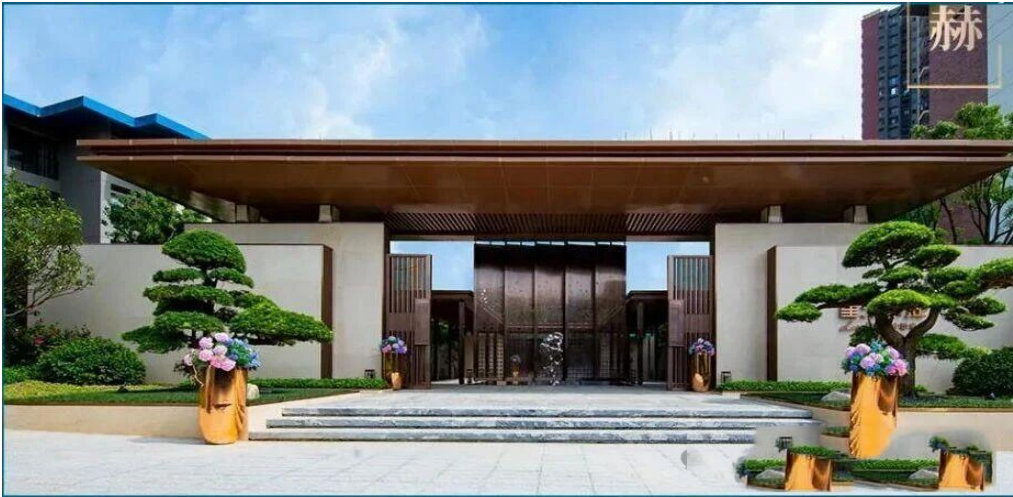
Defining Entrances with Structural Artistry--Custom-engineered porte-cochères, entrance canopies, and architectural eaves that blend protection with powerful design.

A canopy is often the very first feature a visitor interacts with. It is more than just weather protection; it is a definitive architectural statement. At XYC Metalworks, we specialize in the custom design and engineering of premium entrance systems—from monumental glass and steel Porte-Cochères for luxury hotels to sleek, cantilevered architectural eaves for modern residences.

We master complex geometries, including angular futuristic forms and elegant curved rooflines. By seamlessly integrating structural engineering with functional systems like drainage and lighting, we ensure your building's entrance is as performant as it is striking.

Material Selection

- **Aluminum Alloy:** Lightweight and highly formable. The best choice for large spans and complex curves to reduce structural load. Finished with PVDF for extreme weather resistance.
- **Stainless Steel (304/316):** High-strength and rigid. Ideal for structural frames, glass support spiders, and coastal environments (Grade 316L).
- **Structural Glass:** Laminated and tempered options for safety and clarity.



Technical Specifications

Feature	Specification
Structure Types	Column-Supported (Porte-Cochère), Cantilevered (Floating), Suspended (Rod/Cable).
Cladding Materials	Aluminum Panel (Solid/Perforated), Stainless Steel, Structural Glass.
Finish Options	PVDF Coating (20-Year Warranty), Powder Coat, PVD, Wood-Grain.
Functional Integration	Internal Gutter/Downspout Drainage, LED Lighting Channels.
Geometry Capabilities	3D Curved, Warped, Angular, Multi-Facet.

Trusted Engineering, Ultimate Precision

Engineering the Grand Entrance---We provide structural solutions for every scale, ensuring wind-load resistance and aesthetic impact.

Design Typologies:

- **Porte-Cochères (Drop-off Canopies):** Large-span, column-supported structures designed for multi-lane vehicle drop-offs. We engineer these for heavy wind and snow loads while maintaining a light, open visual feel.
- **Cantilevered Entrance Canopies:** Structural beams anchored directly to the building facade, creating a floating effect without the need for ground columns. Ideal for modern office towers and retail storefronts.
- **Architectural Roof Eaves:** Custom-formed metal edges that extend the building's roofline. We specialize in complex shapes, including "Modern Chinese-Style" curved eaves and angular, diamond-like facets (similar to W Hotel designs).
- **Glass & Steel Awnings:** Combining structural stainless steel spiders/frames with toughened glass to maximize natural light and transparency.



Integration & Finishes

Seamless System Integration --- A modern canopy is a machine for living. We hide the utility to highlight the beauty.

Integrated Features:

- **Internal Drainage Systems:** Say goodbye to unsightly external pipes. We engineer internal gutters and downspouts hidden within the columns or cladding for a clean, minimalist aesthetic.
- **Integrated Lighting:** Our designs feature built-in channels for LED edge lighting, recessed downlights, or starry-sky effects, turning the canopy into a glowing landmark at night.
- **Soffit Design (The Underside):** The soffit is the "fifth façade." We offer:
 1. **Metal-Clad Soffits:** Smooth, solid panels with PVDF finishes.
 2. **Louvered Soffits:** Linear aluminum blades for a textured look.
 3. **Wood-Grain Aluminum:** The warmth of wood with the durability of metal.

4. Pavilions & Gazebos

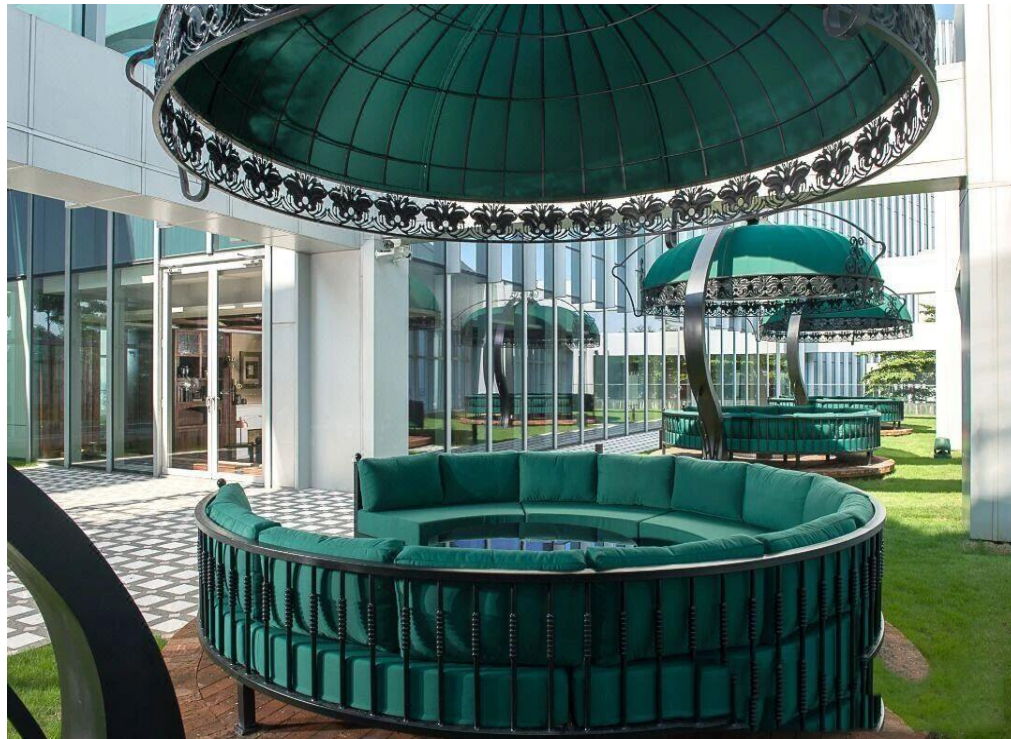
The Art of Outdoor Living-- Bespoke aluminum and steel structures, blending Modern Chinese aesthetics with enduring engineering.



Trusted Engineering, Ultimate Precision

A pavilion is the destination within a landscape; a place where architecture meets nature. XYC Metalworks specializes in the custom fabrication of high-end garden structures, ranging from serene **Modern Chinese Teahouses** to ornate **Western Gazebos**.

We replace traditional maintenance-heavy wood with premium **Aluminum and Steel**, utilizing advanced **Wood-Grain and PVD COATING Finishes** to achieve a natural aesthetic that resists rot, warping, and weathering. Engineered for permanence, our structures are the definitive centerpieces for luxury estates, hotels, and public parks.



Design Styles

Subsection Title: Bespoke Structural Forms **Description:** From iconic circular portals to complex roof systems, we engineer architectural statements tailored to your site.

Signature Styles:

- **Modern Chinese Pavilions:** Our specialty. We reinterpret traditional complex joinery and flying eaves using durable metal, perfect for cultural centers and luxury courtyards.
- **Moon Gate Features:** Circular architectural openings that serve as dramatic framing devices or entrances, blending structure with artistic expression.
- **Waterside Teahouses:** Lightweight aluminum structures designed for waterfronts, featuring integrated seating and louvered screens for privacy.
- **Ornate Garden Gazebos:** Classic Western styles featuring intricate forged steel details and multi-tiered roofs for a timeless European look.

Materials & Engineering

Engineered for Longevity-- Pre-fabricated for efficiency, finished for durability.

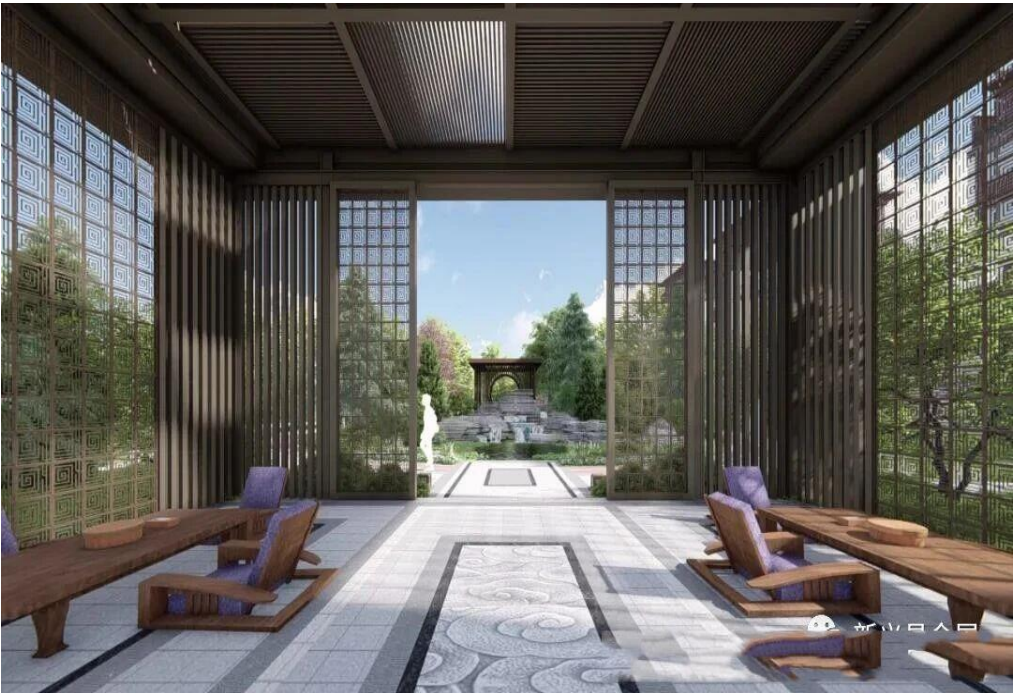
The "Wood-Grain" Advantage: We specialize in realistic **Sublimation Wood-Grain Finishes** on aluminum. This provides the warmth and beauty of timber without the maintenance—no rotting, termite issues, or seasonal painting required.

Material Options:

- **Aluminum Alloy:** Lightweight and rust-proof. The ideal base for wood-grain finishes and louvered systems.
- **Coated Mild Steel:** High strength for complex, ornate curves and heavy-duty structural frames.
- **Stainless Steel:** Maximum corrosion resistance for coastal luxury projects.

Installation:

Modular Pre-Fabrication: Structures are engineered in sections and test-fitted in our factory to ensure fast, seamless assembly on-site.



Technical Specifications

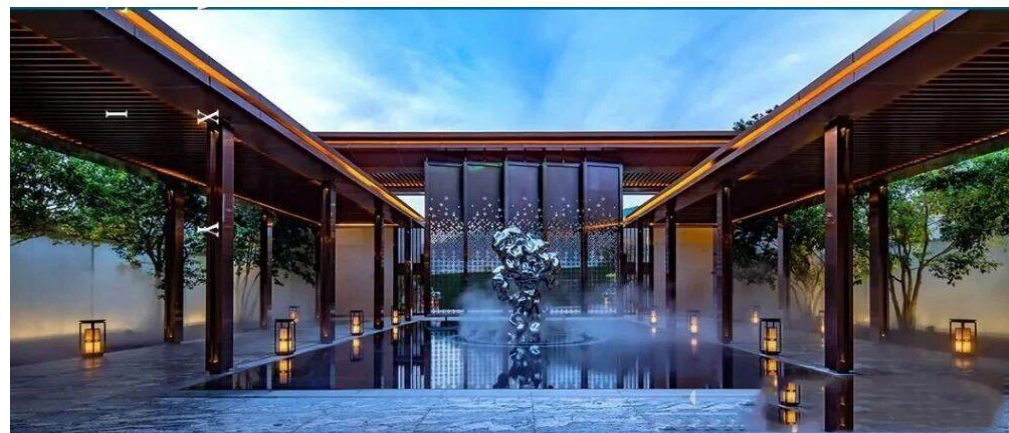
Feature	Specification
Primary Materials	Aluminum Alloy (6063), Mild Steel, Stainless Steel
Finishes	Realistic Wood-Grain (Sublimation), PVDF (20-Year Warranty), Powder Coat
Structure Types	Pavilions, Gazebos, Moon Gates, Pergolas, Teahouses
Roof Styles	Flat Louvered, Traditional Tiled (Metal), Curved, Multi-Tier
Installation	Bolt-down to concrete footing or structural deck

5. Pergolas & Walkways

Defining Outdoor Spaces with Light & Shadow -- Custom-fabricated louvered roof systems and modern garden corridors.

Architectural pergolas are the structural framework of a well-designed landscape. They define pathways, frame courtyards, and create sophisticated "outdoor rooms" that blend shelter with open air.

At XYC Metalworks, we specialize in the custom fabrication of high-end metal pergolas. Moving beyond standard kits, we engineer bespoke structures—from **Modern Chinese-Style Corridors** with realistic wood-grain finishes to luxurious **PVD Bronze Stainless Steel** structures for high-end hotels. Our systems are permanent, rust-proof, and designed to be the enduring backbone of your garden.

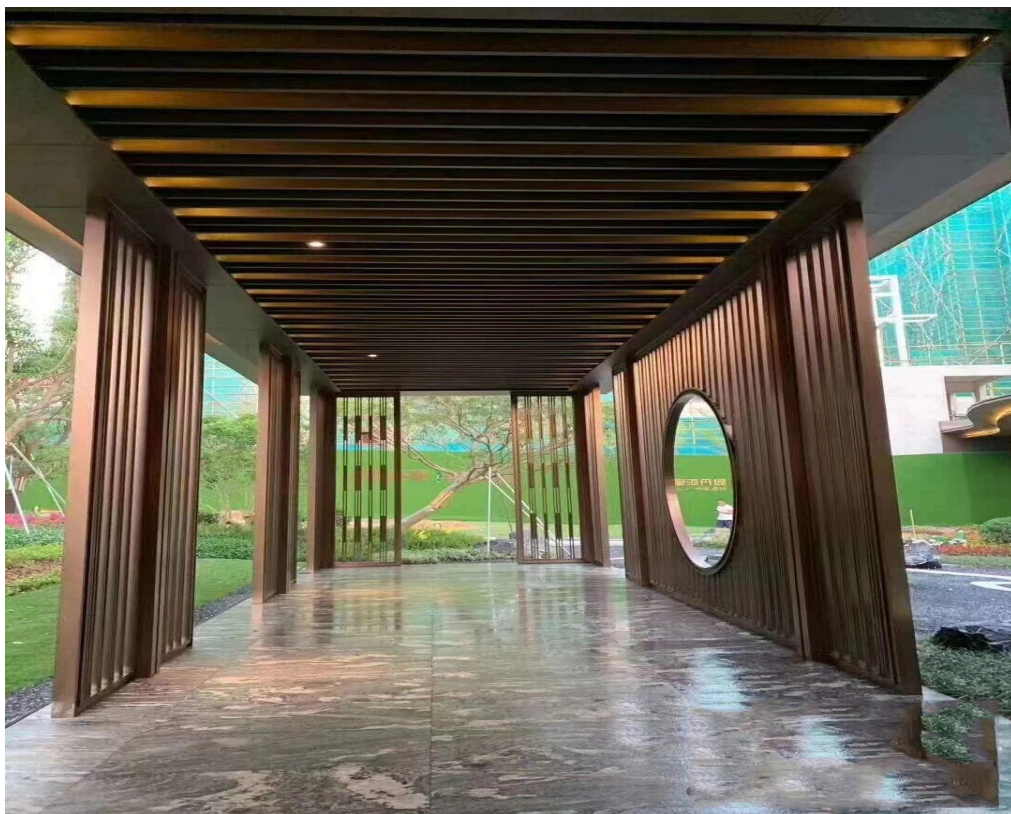


Styles & Systems

Architectural Shading Systems: We fabricate fixed louvered systems designed for optimal shade and aesthetic impact, available in any length or configuration.

Signature Designs:

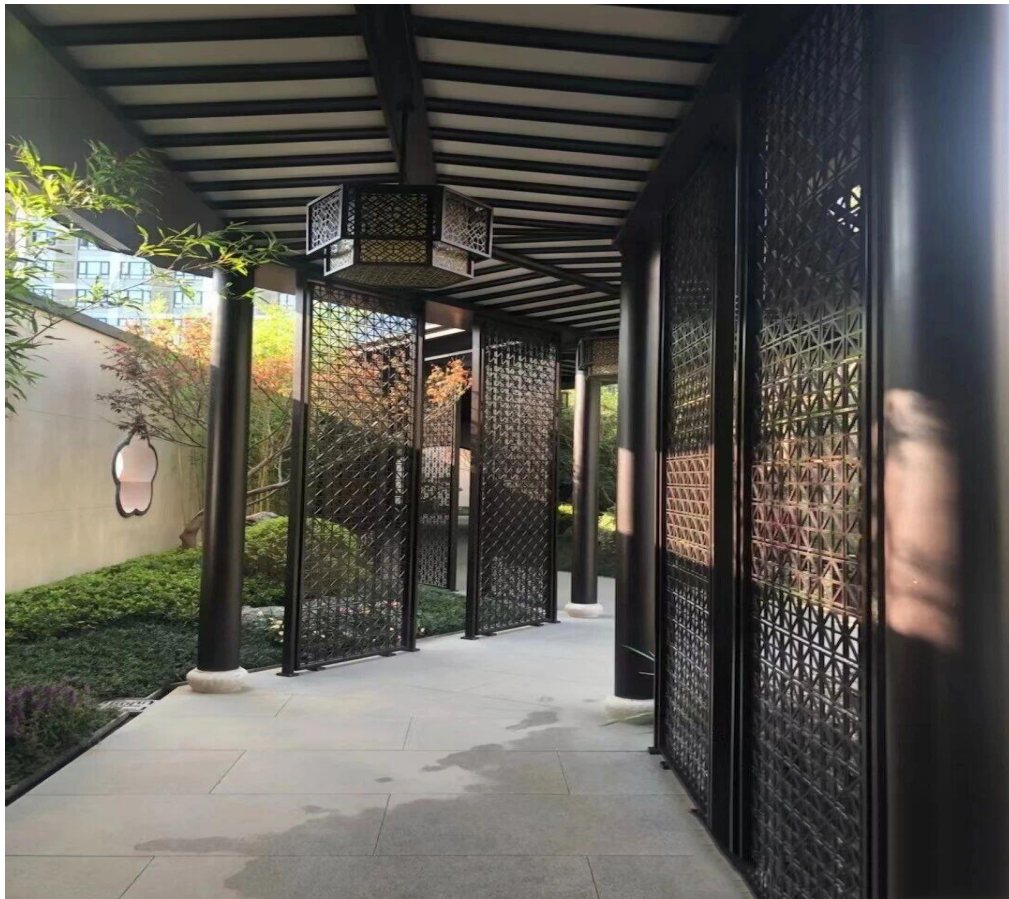
- **Louvered Roof Pergolas:** Featuring fixed horizontal or angled blades (baffles) that provide cooling shade while allowing airflow. We also specialize in complex **Curved Louver Systems** that follow the landscape's flow.
- **Modern Chinese Walkways:** Our specialty. Long, winding landscape corridors that reinterpret traditional Chinese timber architecture using durable, low-maintenance metal.
- **Courtyard Enclosures:** Structures designed to frame a central zen garden or water feature, creating a private, tranquil retreat.
- **Moon Gate Integration:** We can integrate iconic circular "Moon Gate" openings into pergola walls, laser-cut and structurally reinforced for a dramatic visual effect.



Trusted Engineering, Ultimate Precision

Technical Specifications

Feature	Specification
Primary Material	Aluminum Alloy (Lightweight/Rust-proof) or Stainless Steel (Premium/Structural)
Roof Type	Fixed Angled Louvers, Horizontal Baffles, Curved Beams
Finishes	Sublimation Wood-Grain, PVD Bronze/Black, PVDF Powder Coat
Installation	Bolt-down internal base plate to concrete footing
Special Features	Integrated LED Lighting, Moon Gate Openings, Side Screens



Finishes & Engineering

The Look of Nature, The Strength of Metal : Achieve the exact aesthetic you desire without the maintenance headaches of natural materials.

Advanced Finishes:

- **Wood-Grain Aluminum:** Using sublimation technology, we create a highly realistic wood texture on aluminum. It offers the timeless warmth of timber but will never rot, warp, or fade—perfect for garden walkways.
- **PVD Bronze Stainless Steel:** For ultimate luxury, we apply a "Physical Vapour Deposition" coating. Finishes like **Hairline Brushed Bronze** or **Antique Bronze** provide a rich, metallic depth that is far superior to paint.

Engineering Features:

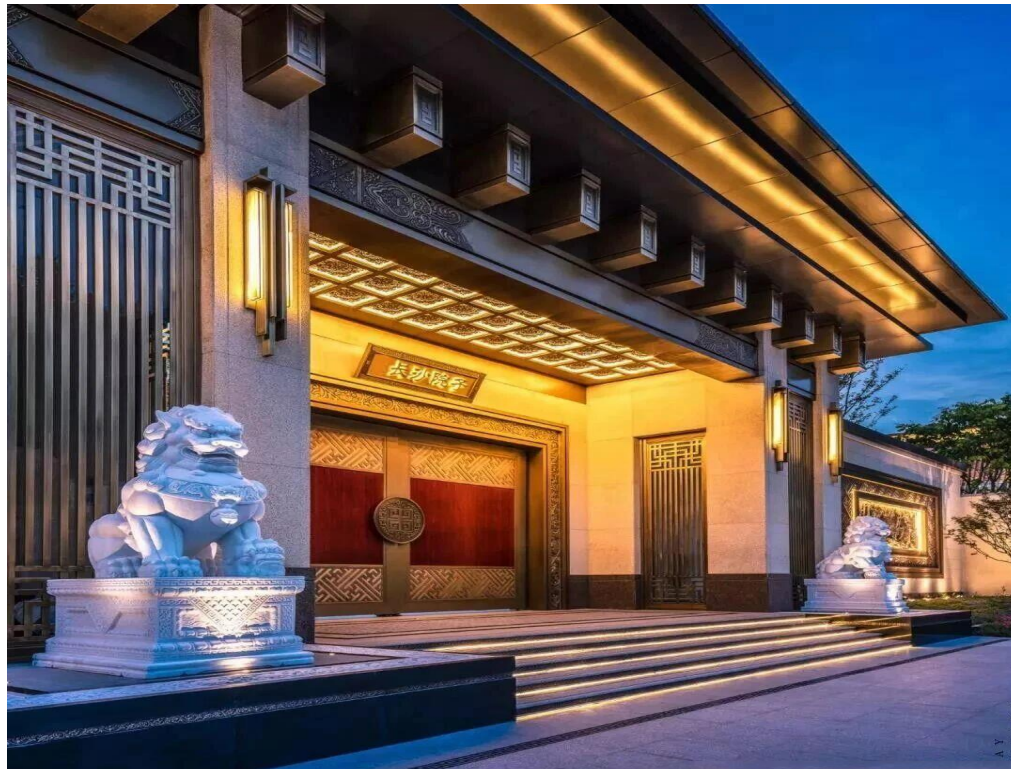
- **Seamless Anchoring:** Columns feature internal base plates bolted to concrete footings, covered by decorative sleeves for a clean, screw-free appearance.
- **Integrated Tech:** Provisions for concealed LED lighting channels and hanging lanterns are built directly into the frame.

6. gates and doors

The First Handshake of Your Property: Custom-fabricated estate gates, pivot doors, and automatic entrance systems.

A gate is more than a barrier; it is a statement of identity. At XYC Metalworks, we engineer magnificent entrances that blend artistry with security. From the grandest **Chinese-Style Courtyard Gates** in PVD Bronze to sleek, minimalist **Modern Driveway Gates**, we control the entire fabrication process.

We don't just build a door; we craft a complete system. Our capabilities extend to the structural frame, the integrated automation, and even the **Custom Door Handles**—the "jewelry" of the entrance—ensuring every touch-point reflects quality.



Design Spectrum

Mastering Every Style: Whether your project demands ornate tradition or modern minimalism, we have the fabrication mastery to deliver.

Signature Styles:

- **New Chinese Luxury:** Our specialty. Grand courtyard gates featuring complex riveted details ("General's Doors"), cast relief panels, and ornate laser-cut patterns that reinterpret tradition with modern stainless steel.
- **Modern Western Minimalism:** Sleek, understated designs for contemporary homes. We fabricate clean horizontal slat gates, perforated screens, and simple framed pedestrian gates with precise, seamless welds.
- **Statement Pivot Doors:** Oversized entrance doors that rotate on a hidden axis rather than side hinges. Ideal for grand hotel lobbies and luxury villas, offering a smooth, weightless operation.

Craftsmanship & Hardware

The Details Define the Luxury: A gate is only as good as its finish and its handle.

Custom Hardware:

- **Bespoke Handles:** We fabricate our own door pulls in-house to match your gate perfectly. From massive semi-circular "Moon" handles to engraved brass pulls and minimalist modern bars.

Advanced Finishes:

- **PVD Bronze:** The timeless look of antique bronze with the durability of stainless steel. Won't tarnish or fade.
- **Cast Relief Art:** Creating one-of-a-kind 3D art pieces, such as dragon motifs or floral reliefs, cast directly into the metal panel.
- **Powder Coating:** Durable matte black or grey finishes for modern aluminum gates.



Technical Specifications

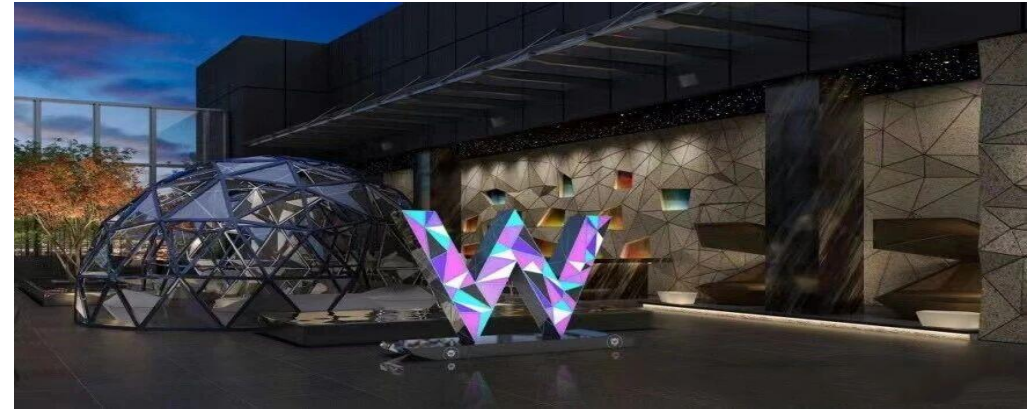
Feature	Specification
Materials	Stainless Steel (304/316L), Aluminum Alloy, Cast Aluminum/Bronze
Door Types	Swing, Sliding, Pivot, Pedestrian, Courtyard
Finishes	PVD Bronze/Black, Cast Relief, Powder Coat, Mirror Polish
Hardware	Custom-Fabricated Handles (Brass/SS), Heavy-Duty Hinges
Automation	Compatible with all major motor systems (Sliding/Swing)
Beauty & Brains	All our gates are engineered for seamless automation.
● Sliding Gates:	Precision-balanced tracks for smooth operation, reducing strain on motors.
● Swing Gates:	Reinforced hinge points to support heavy automatic arms.
● Material Choice:	We recommend Aluminum Alloy for large automatic gates to reduce weight and motor wear, while Stainless Steel provides unmatched security for manual pedestrian gates.

7. sculptures & artworks

Crafted with Imagination. Engineered to Inspire: Bespoke stainless steel, bronze, and Corten steel art that transforms spaces into landmarks

At XYC Metalworks, we believe art is more than decoration; it is a dialogue between the environment and the viewer. We specialize in the precision fabrication of custom metal sculptures, creating pieces that are bold, reflective, and enduring.

From monumental outdoor landmarks to sophisticated interior features, every piece we create is a fusion of contemporary design and rigorous engineering. Whether acting as the primary fabricator for a renowned artist or executing an architectural vision for a hotel lobby, we bring complex concepts to life with flawless detail.



Artistic & Architectural Features

Defining Space through Form: We fabricate large-scale artworks that captivate viewers and define the identity of public and commercial spaces.

Sculptural Categories:

- **Landmark Public Art:** Large-scale outdoor sculptures designed for city plazas, parks, and memorial events. Engineered to withstand wind, weather, and UV exposure while delivering powerful visual impact.
- **Architectural Centerpieces:** Iconic installations for building façades and entrances, such as crescent moon installations or geometric abstract forms that interact with the building's architecture.
- **Hospitality & Retail Art:** Sophisticated statement pieces for luxury lobbies and shopping mall atriums, including intricate ceiling installations and futuristic curved sculpture bars (as seen in W Hotel projects).
- **Garden & Residential:** Character-rich pieces for private courtyards, ranging from abstract mirror-polished forms to serene Chinese-style bronze cauldrons.

Trusted Engineering, Ultimate Precision

Functional Art & Customization

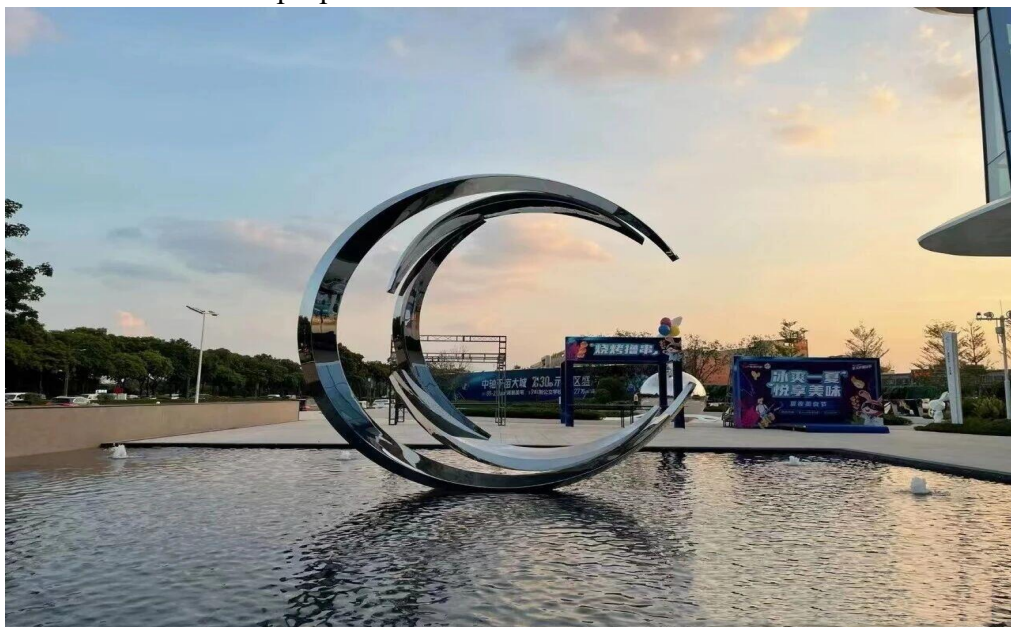
Where Art Meets Purpose: Our definition of "artwork" extends beyond static forms. We create functional pieces that elevate the user experience.

Functional & Integrated Art:

- **Sculptural Furniture:** Mirror-polished stainless steel chairs and tables that serve as both functional seating and striking art objects.
- **Illuminated & Kinetic Art:** Dynamic sculptures featuring integrated LED lighting—such as massive metal trees or light-interactive perforated forms—that create spectacular night-time marvels.
- **Landscape Structures:** Artistic metal pavilions and decorative arches designed for terraces and art expos.

Customization Capabilities:

- **Unlimited Finishes:** Choose from high-polish mirror (for brilliant light interaction), brushed satin, textured, or natural patina effects for bronze and Corten steel.
- **Text & Pattern Integration:** We can laser-cut intricate patterns or engrave text and logos directly into the sculpture for branding or commemorative purposes.



The Fabrication Process

From Concept to Reality We are the technical partner to your artistic vision.

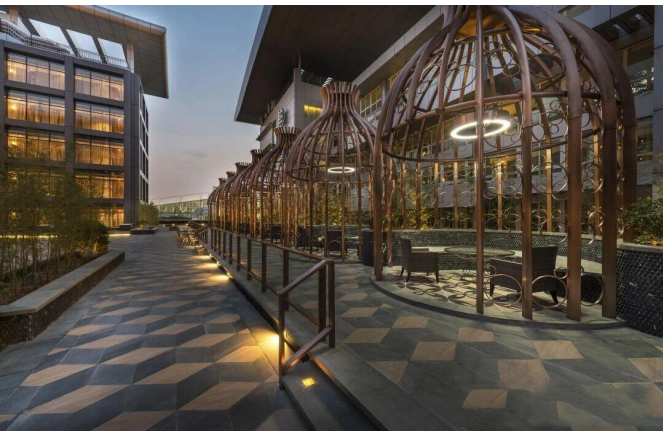
Consultation & Design: We analyze your concept, sketches, and site requirements to develop detailed digital mockups.

Precision Manufacturing: Using advanced laser cutting, CNC machining, and TIG welding, our craftsmen execute the design with exceptional detail.

Installation Support: We provide full installation guidance to ensure safe, flawless placement of even the heaviest monuments.

Technical Specifications

Feature	Specification
Primary Materials	Stainless Steel (304/316L), Bronze, Corten Steel, Aluminum
Surface Finishes	8K Mirror Polish, Hairline Brushed, PVD Color, Natural Patina, Painted
Applications	Public Plazas, Hotel Lobbies, Gardens, Façades
Specialties	LED Integration, Kinetic Motion, Structural Engineering, Water Features



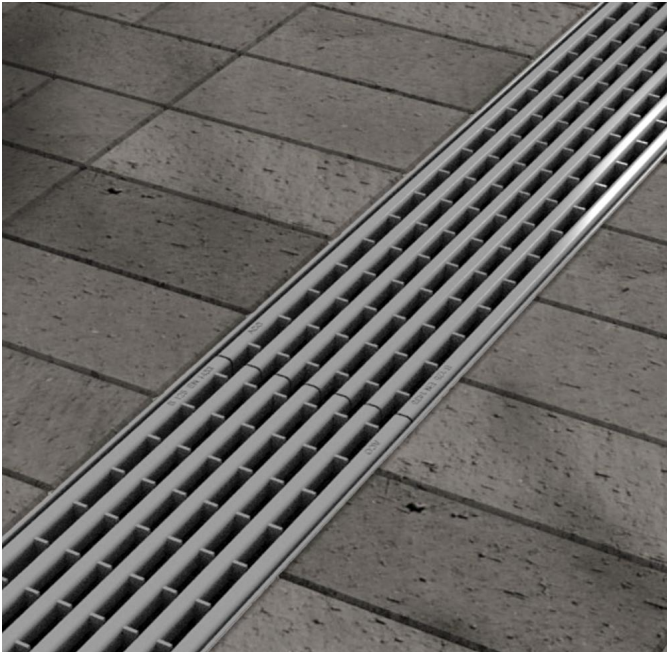


8. Gratings

Engineered for Strength, Designed for Aesthetics: Precision stainless steel and aluminum grating systems for flooring, facades, and drainage.

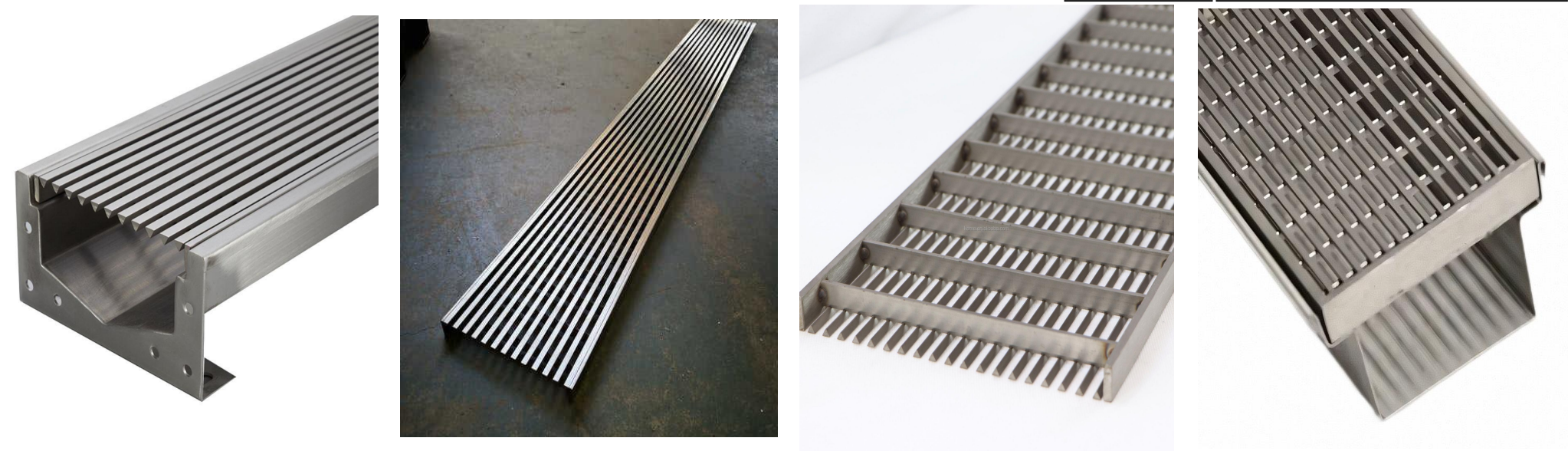
At XYC Metalworks, we believe functionality should never compromise design. Our custom metal grating systems bridge the gap between heavy-duty industrial performance and sleek architectural refinement.

From slip-resistant walkways on offshore rigs to elegant, **Press-Locked Stainless Steel** drainage covers in luxury plazas, we engineer solutions that withstand the harshest elements while maintaining clean, precise lines. Whether specifically for load-bearing capacity or visual transparency, our gratings are built to last.



Technical Specifications

Feature	Specification
Material	Stainless Steel (304/316L), Aluminium Alloy
Construction	Pressure Locked (Architectural), Welded (Industrial), Swaged
Surface Types	Smooth, Serrated (Anti-Slip), Perforated
Finishes	Mill Finish, Pickled & Passivated, Anodized, PVD Color
Applications	Walkways, Trench Drains, Facade Screens, Industrial Flooring
Standards	Meets EN/ASTM Load Bearing Standards



9. Outdoor Balustrades & Railings

Engineering Safety & Style for Exteriors: Premium 316 Marine-Grade stainless steel systems for balconies, decks, and coastal environments.

XYC Metalworks provides high-performance outdoor balustrade systems where structural safety meets sophisticated design. Engineered to withstand the elements, our exterior railings are architecturally versatile and immune to the rot and warping that plague traditional wood.

We specialize in **316 Marine-Grade Stainless Steel**, ensuring our systems resist salt spray, UV rays, and corrosion. From minimalist cable railings that maximize views to robust glass systems that provide wind protection, we deliver code-compliant solutions tailored to the unique challenges of exterior applications.



Technical Specifications

Feature	Specification
Material Grade	Stainless Steel 316 (Marine) / 304 (Inland)
Infill Types	Tempered Glass, Tension Cable, Solid Rod/Bar
Mounting	Top Mount, Fascia (Side) Mount 20
Finishes	Mirror Polish (Coastal), Satin Brush, PVD Color
Code Compliance	Engineered to IBC/ASTM load & safety standards
Applications	Balconies, Pool Fencing, Decks, Exterior Stairs

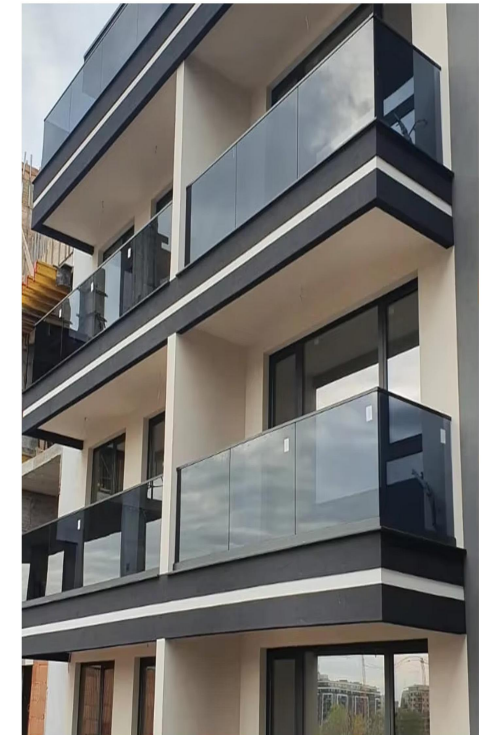
Trusted Engineering, Ultimate Precision

Infill Systems

Subsection Title: Versatile Infill Options **Description:** Customize your barrier to match your architectural vision with our range of structural infills.

System Types:

- **Tempered Glass Railing:** The ideal choice for wind protection and unobstructed views. Available in frameless, semi-frameless, or post-mounted configurations.
- **Cable Railing:** A minimalist design utilizing horizontal or vertical stainless steel cables. Perfect for decks where preserving the view is paramount.
- **Rod & Bar Railing:** A modern, secure system using solid horizontal or vertical stainless steel bars (round or square) for extreme durability in high-traffic areas.



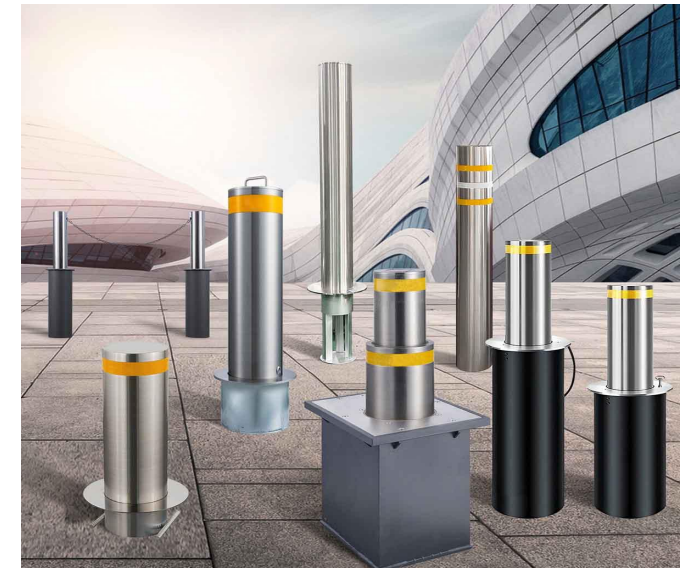
Trusted Engineering, Ultimate Precision

10. Bollards & Posts

Defense with Distinction: Impact-resistant stainless steel bollards engineered for safety, control, and architectural integration.

Bollards are the first line of defense and the last touch of landscape design. At XYC Metalworks, we provide high-performance stainless steel bollards that do more than just block traffic—they enhance the environment.

Engineered for long-term use in commercial, institutional, and urban settings, our bollards are impact-resistant, corrosion-proof, and available in architecturally refined finishes like **PVD Gold and Black**. Whether you need high-security fixed posts for a government building or retractable solutions for a flexible event plaza, we offer a complete range of access control solutions.



Why Stainless Steel?

Compared to concrete or plastic, stainless steel offers the best balance of lifecycle value.

- **Durability:** Excellent; far stronger than plastic and won't crack like concrete.
- **Maintenance:** Low upkeep; no repainting required unlike carbon steel.
- **Aesthetics:** High; modern and polished look suitable for luxury sites.

Trusted Engineering, Ultimate Precision

Function & Security Types

- **Fixed (Embedded) Bollards:** The highest level of security. Anchored deep into concrete for permanent impact resistance, protecting pedestrians and storefronts from vehicular intrusion.
- **Retractable (Telescopic) Bollards:** Designed for flexible access. These posts slide seamlessly underground when not in use, offering a clean, concealed look for mixed-use zones or emergency lanes.
- **Removable Bollards:** Featuring a lockable sleeve system, these can be completely removed for temporary event access or maintenance vehicles.
- **Surface-Mounted Bollards:** Bolt-down solutions ideal for retrofit projects or areas where deep excavation isn't possible (e.g., parking decks)



Beyond the Catalog: Our expertise is not limited to these categories. We welcome all inquiries for bespoke architectural metalwork. Contact us to discuss your unique vision.

Next: Project Showcase.

Project showcase

From Vision to Landmark: XYC Metalworks is a premier fabrication partner for the world's leading architects and developers. Our elite portfolio spans Hospitality, Residential, Transportation, and Commercial sectors, demonstrating our ability to transform ambitious designs into precision-engineered, timeless metal solutions for projects globally.

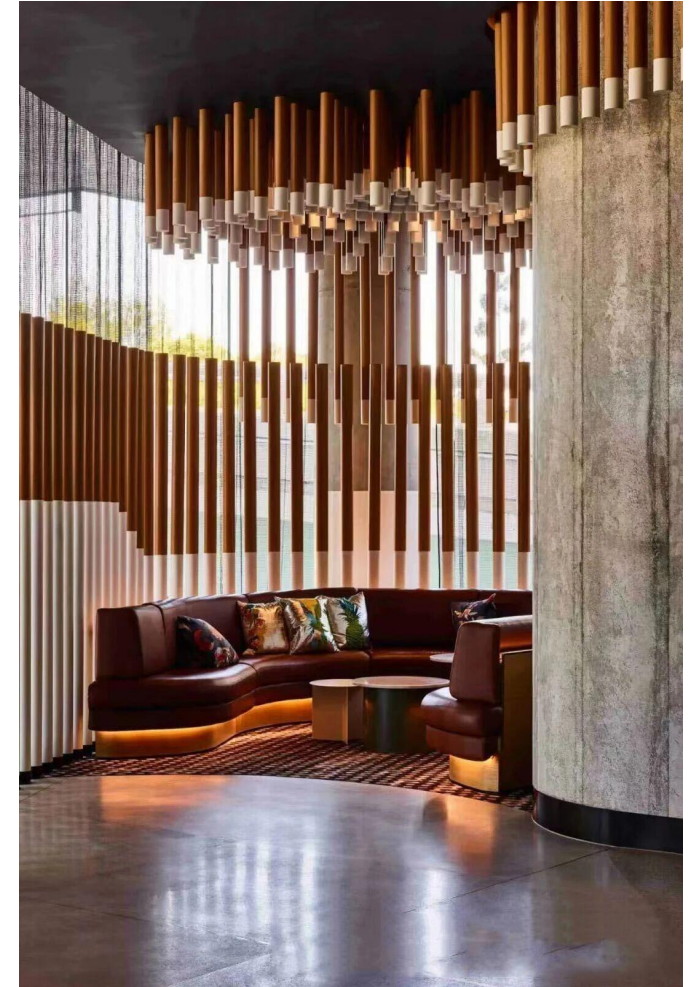
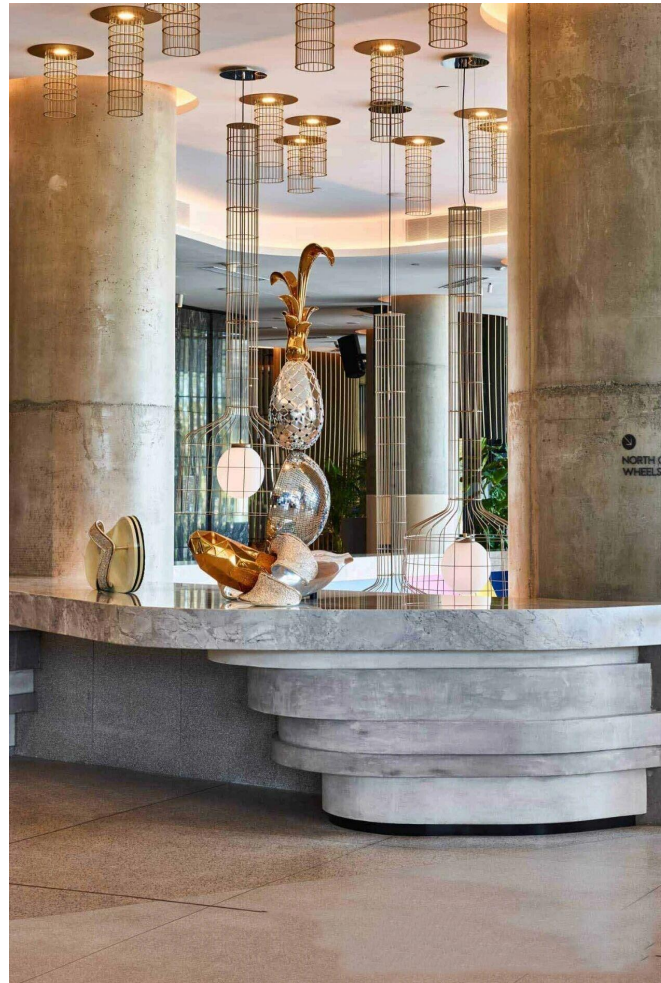


Trusted Engineering, Ultimate Precision

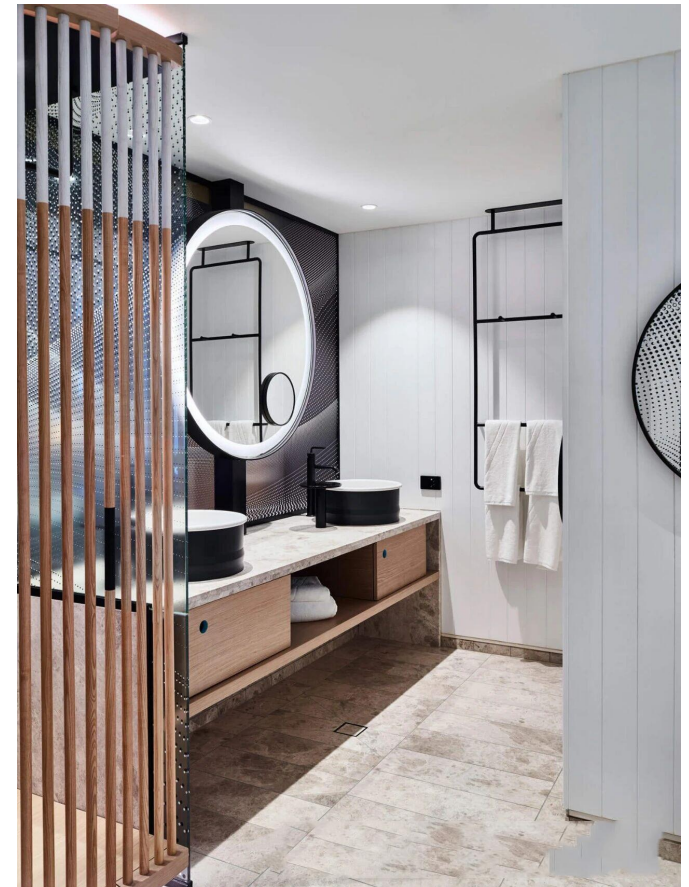
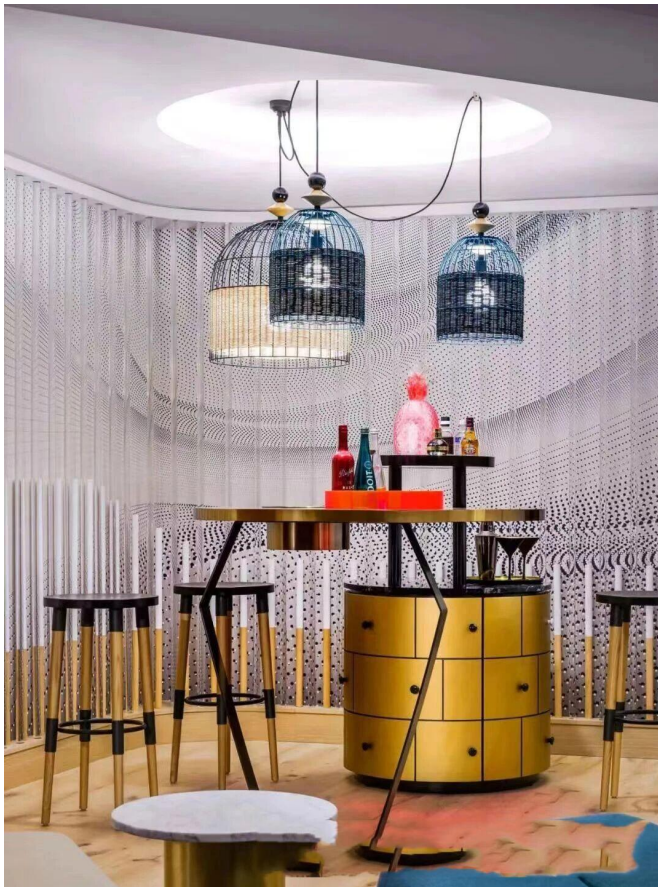
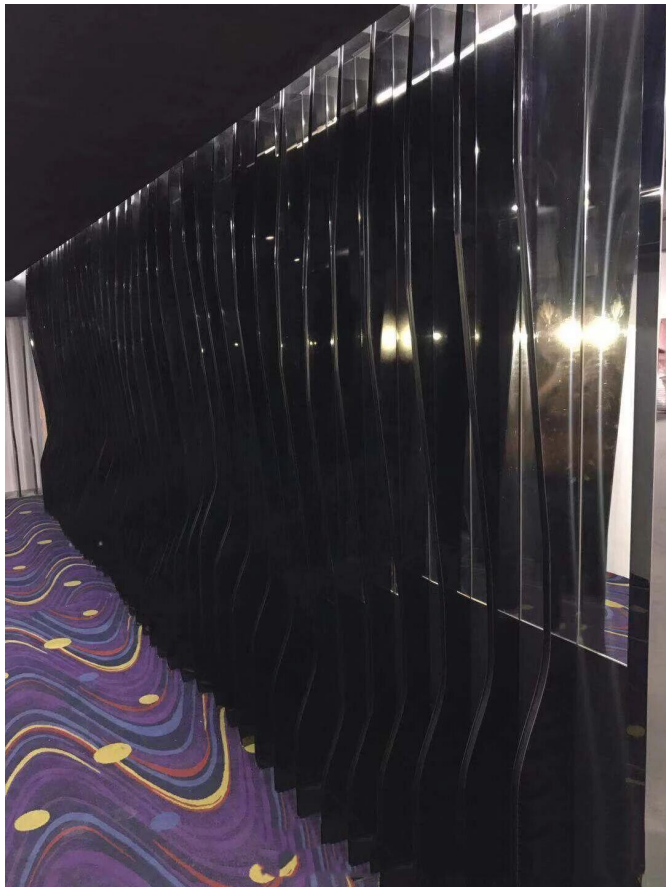
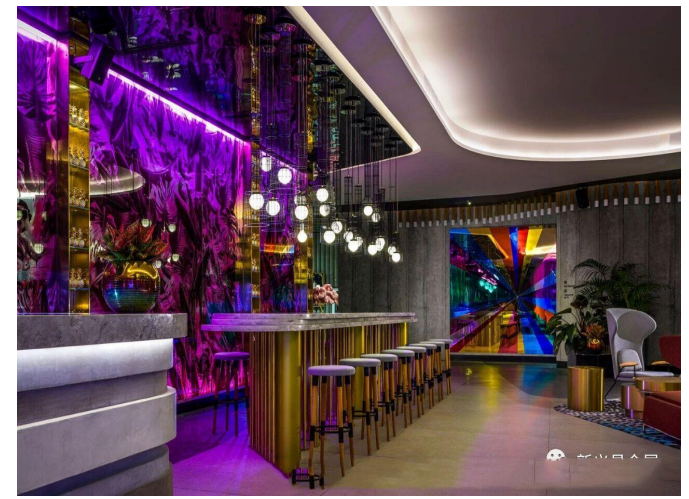
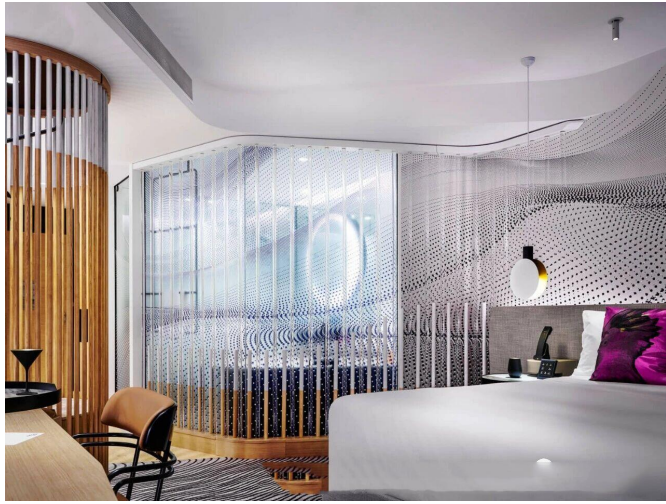
一, Hospitality (Hotels & Resorts)

1. W Brisbane Hotel

- **Location:** Brisbane, Australia
- **Category:** Hospitality (Luxury Hotel)
- **Overview:** As a trusted partner for over 10 W Hotel projects globally, XYC Metalworks was commissioned to bring Brisbane's ambitious interior vision to life.



Trusted Engineering, Ultimate Precision

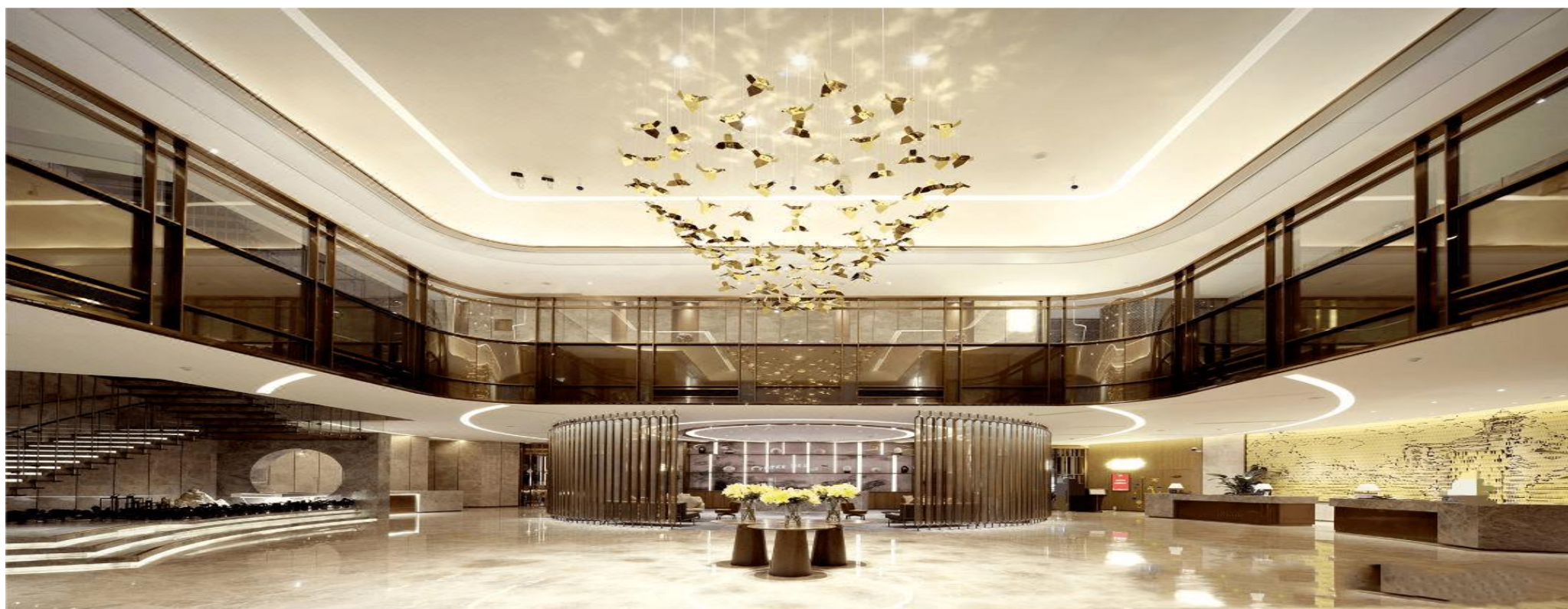


Trusted Engineering, Ultimate Precision

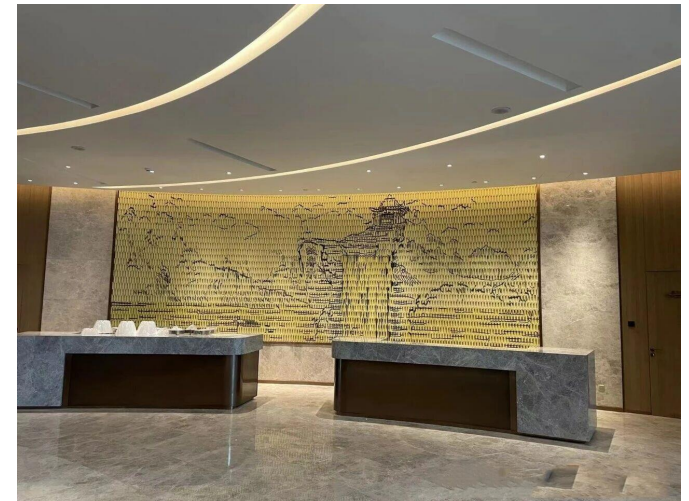
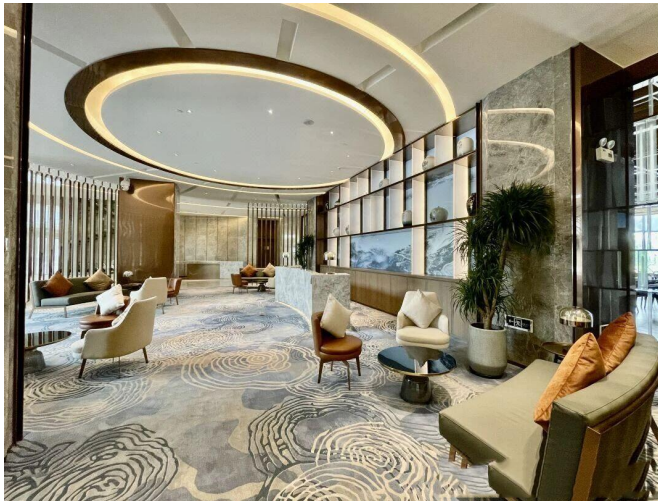
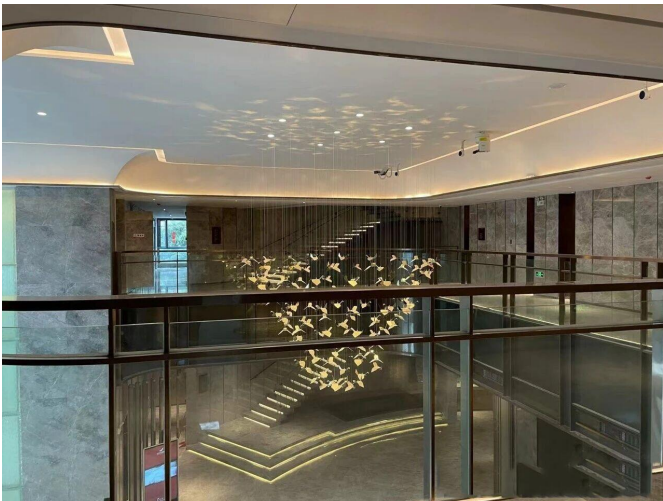
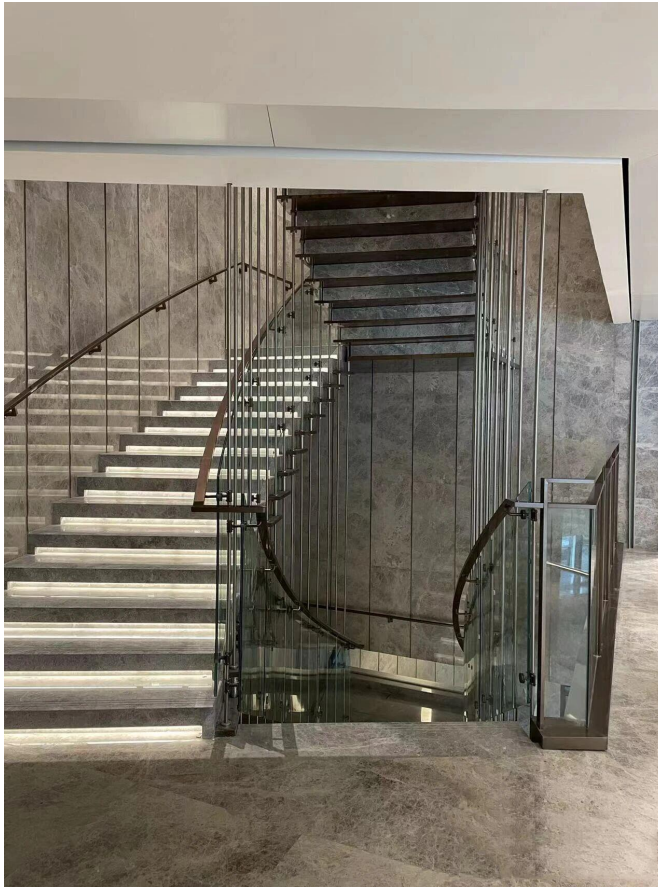
2. White Swan Hotel, Caiyi Wing

- **Location:** Foshan, China
- **Category:** Hospitality (Five-Star Hotel)
- **Overview:** For the modern Caiyi Wing of this iconic brand, XYC Metalworks moved beyond simple fabrication to provide a comprehensive architectural metal package characterized by engineering innovation.
- **Key Highlights:**
 1. **Patented Grand Staircase:** To resolve significant structural challenges in the original design, our engineering team developed a technically upgraded solution. This innovative system, which allows stone steps to "float" within floor-to-ceiling PVD bronze rods, is now a registered patent held by XYC.
 2. **Lobby & Interiors:** The scope extended to elegant PVD Champagne Gold lobby screens, fluted bronze elevator doors, and large-scale "butterfly" and "mountain" art installations.

Value Delivered: This project stands as a testament to our ability to solve complex structural problems and deliver patented, custom-engineered solutions for luxury environments.



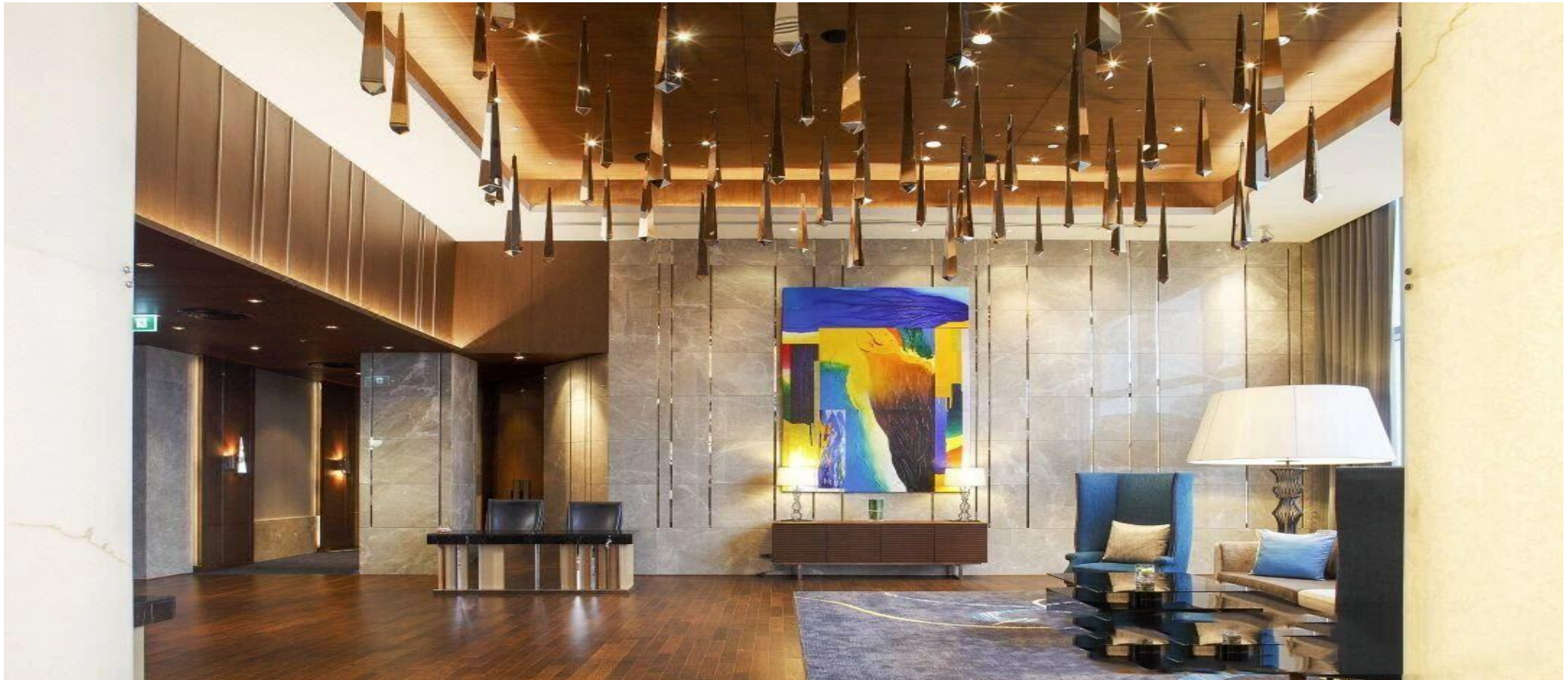
Trusted Engineering, Ultimate Precision



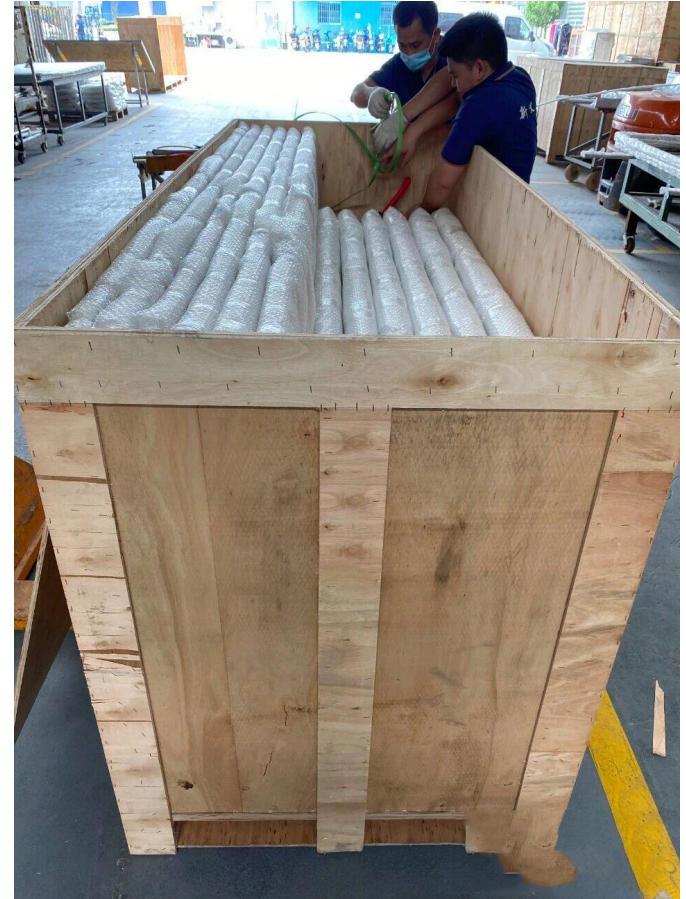
Trusted Engineering, Ultimate Precision

3. Centara Grand at CentralWorld Hotel

- **Location:** Bangkok, Thailand
- **Category:** Hospitality (five-Star Hotel)
- **Overview:** As one of Bangkok's largest iconic hotels, this project demanded a partner capable of high-volume, high-precision fabrication. XYC Metalworks supplied a complete interior fit-out solution, ensuring consistent luxury across hundreds of rooms and public spaces.
- **Key Fabrication:**
 - High-Volume Trim:** Fabricated thousands of meters of PVD gold-finished stainless steel trim for wall inlays in guest rooms and corridors.
 - Custom Fixtures:** Produced hundreds of precision-welded stainless steel vanity frames and mirror surrounds with flawless mitered corners.
 - Bespoke Furniture:** Manufactured illuminated PVD gold closet rails and decorative shelving frames for suites, alongside large-scale lobby ceiling art.
- **Value Delivered:** Demonstrating our mastery of large-scale production and global logistics, we managed the entire lifecycle from PVD finishing to meticulous custom crating for secure international shipment.

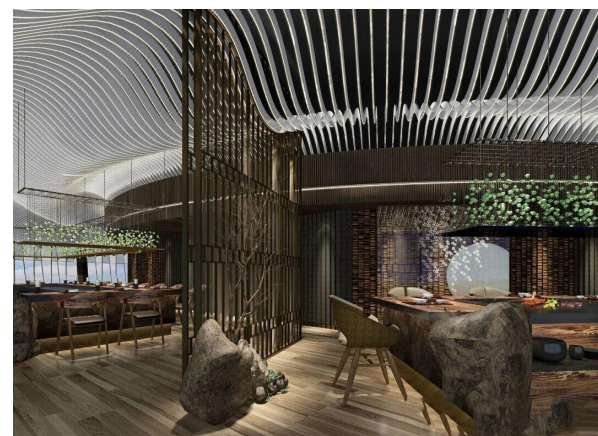
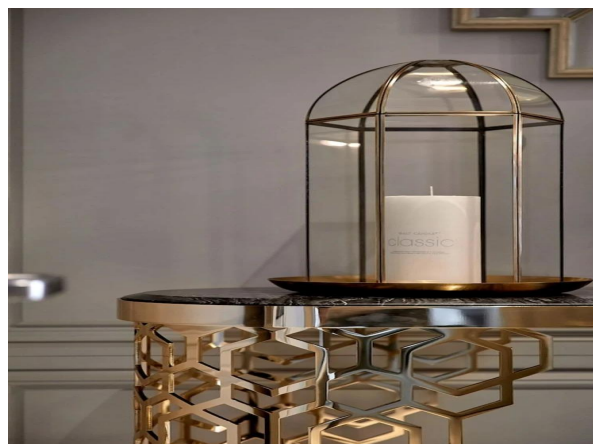
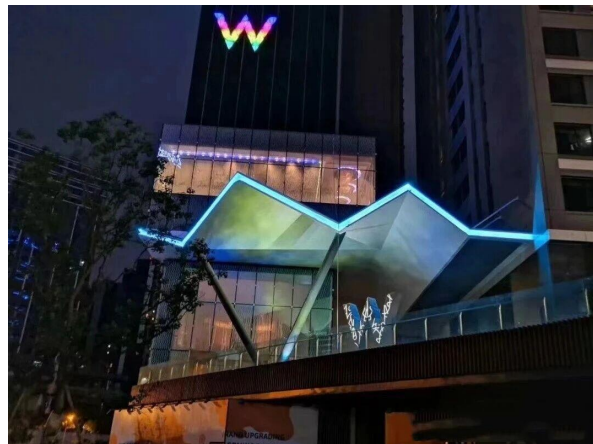


Trusted Engineering, Ultimate Precision



Here is a selection of our completed hotel projects:

- W Brisbane Hotel, Australia
- JW Marriott Marquis Hotel Project, Doha
- Oasis Hotel & Beach Club Project, Doha
- The Ritz-Carlton Hotel Project, Riyadh
- Centara Grand at CentralWorld Hotel Project, Bangkok
- Derayco Hotel Project, Foshan
- Renaissance Shenzhen Luohu Hotel Project
- Pullman Guangzhou Baiyun Airport Hotel Project
- Waldorf Astoria Hotel Project Kuwait
- W Hotel Project, Chengdu
- W Hotel Project, Suzhou
- New Century Grand Hotel Project, Haiyan
- Ramada Plaza Songhu Bay Project, Dongguan
- White Swan Hotel Project, Foshan – Caiyi Wing
- Sofitel Foshan Le Louvre Hotel Project
- W Hotel Project, Guangzhou
- Qiangrong International Hotel Project, Jiujiang
- Bulgari Hotel Project, Shanghai
- Chengdu Mulian Urban Resort Hotel Project
- Ascott Hotel Guangzhou
- Bolanze International Hotel Project
- Pingshan Guest House Project, Shenzhen
- Derayco Hotel Project, Shunde
- Ramada Hotel Project, Dongguan
- Yabon Langyue Hotel Project, Shenzhen etc

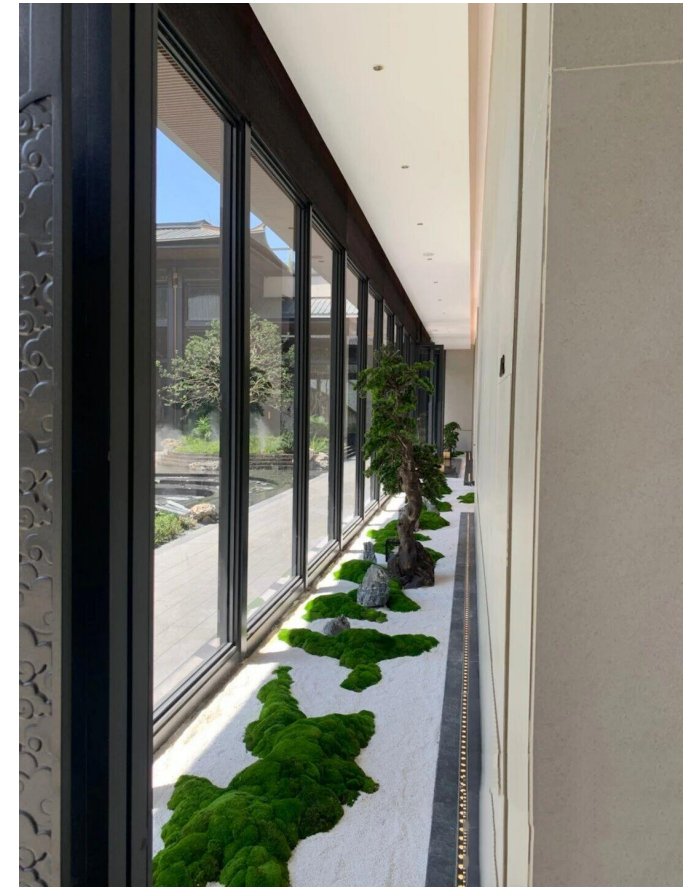


三. Residential & Mixed-Use Developments

1. Project Case Study: Dianjian Longyue Chang'an

- **Location:** Changsha, China
- **Category:** Residential & Mixed-Use (Flagship Sales Center)
- **Overview:** For this prestigious development, XYC Metalworks provided a total architectural metalwork solution, showcasing a mastery of "New Chinese" design that blends traditional aesthetics with precision-engineered modern metal.
- **Key Fabrication:**
 1. **Iconic Entrance & Facades:** Fabricated the imposing, multi-ton main entrance gate featuring custom-textured bronze panels, alongside large-scale backlit signage and laser-cut exterior screen systems.
 2. **Comprehensive Interiors:** Engineered the complete interior staircase with stainless steel cable balustrades, fluted elevator door panels, and backlit lobby walls.
 3. **Bespoke Details:** The scope extended to every decorative element, including PVD bronze screens, washroom partitions, and custom etched metal door handles.
- **Value Delivered:** Managing the entire process from fabrication to on-site installation, this project highlights our ability to execute complex, large-scale projects that demand flawless finishing and integrated luxury design.





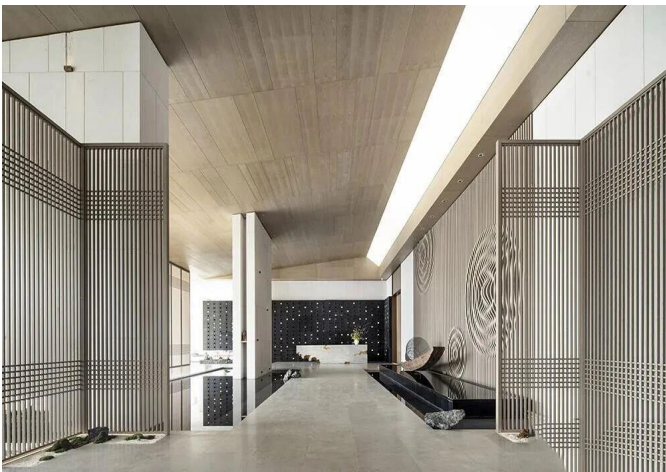
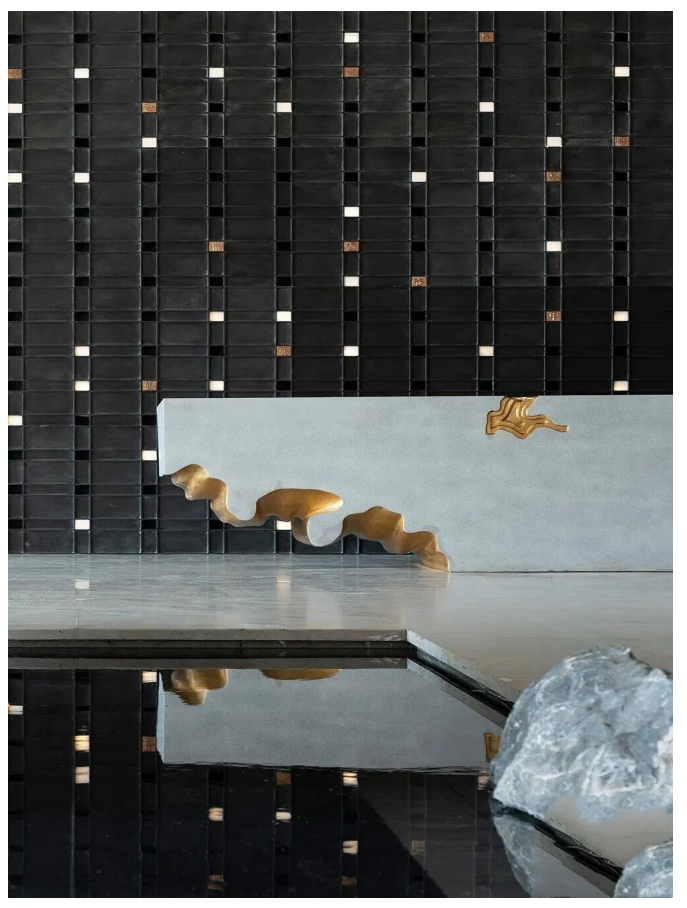
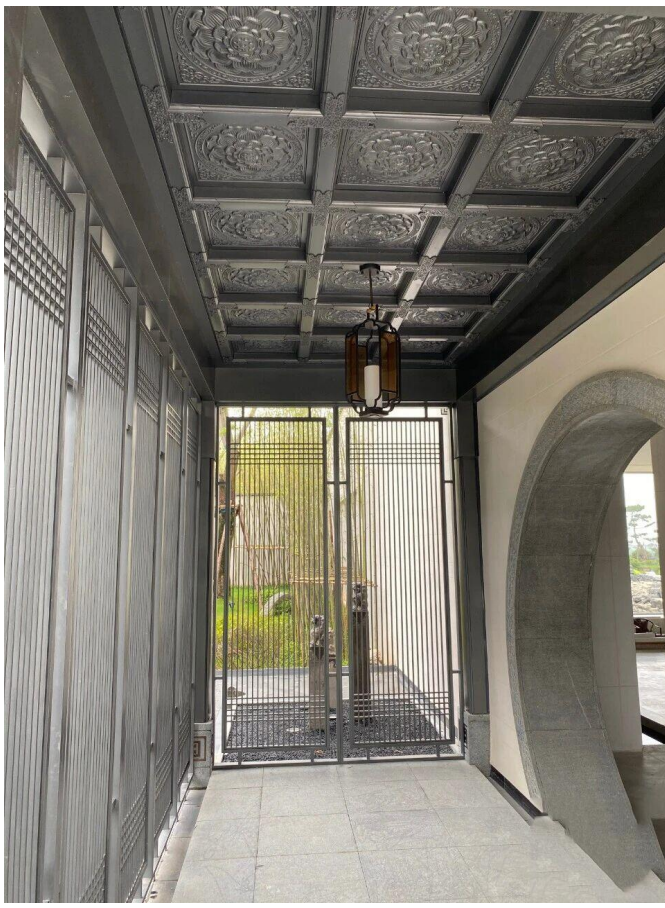
Trusted Engineering, Ultimate Precision

2. Project Case Study: Jiangshan Yue Residential Project

- **Location:** Changsha, China
- **Category:** Residential & Mixed-Use Developments
- **Overview:** For this prestigious Sales Center and public area, XYC Metalworks provided a total architectural metalwork solution. The project serves as a masterpiece of "New Chinese" design, seamlessly blending timeless oriental aesthetics with modern, precision-engineered metal.
- **Key Fabrication:**
 1. **Grand Exteriors:** We fabricated the imposing, multi-ton main entrance gate featuring custom bronze panels, along with large-scale backlit signage, decorative roofing eaves, and laser-cut facade screens.
 2. **Interior Landmarks:** The interior features a stunning, curved sculptural staircase with stainless steel handrails, massive metal-framed skylights, and metal-clad columns.
 3. **Artistic Details:** Our scope extended to bespoke finishes including intricate stamped (embossed) ceiling tiles and large-scale 3D wavy metal art wall panels.
- **Value Delivered:** Managing the entire lifecycle from workshop fabrication to on-site installation, this project highlights our ability to execute complex, large-scale works that demand flawless finishing.



Trusted Engineering, Ultimate Precision



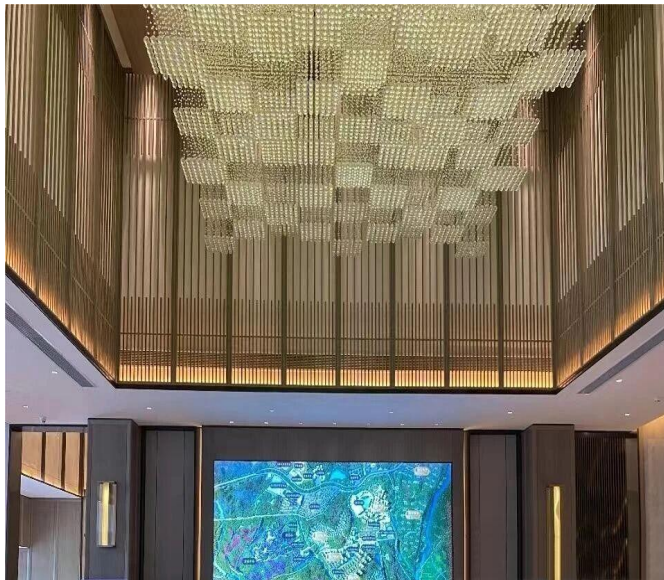
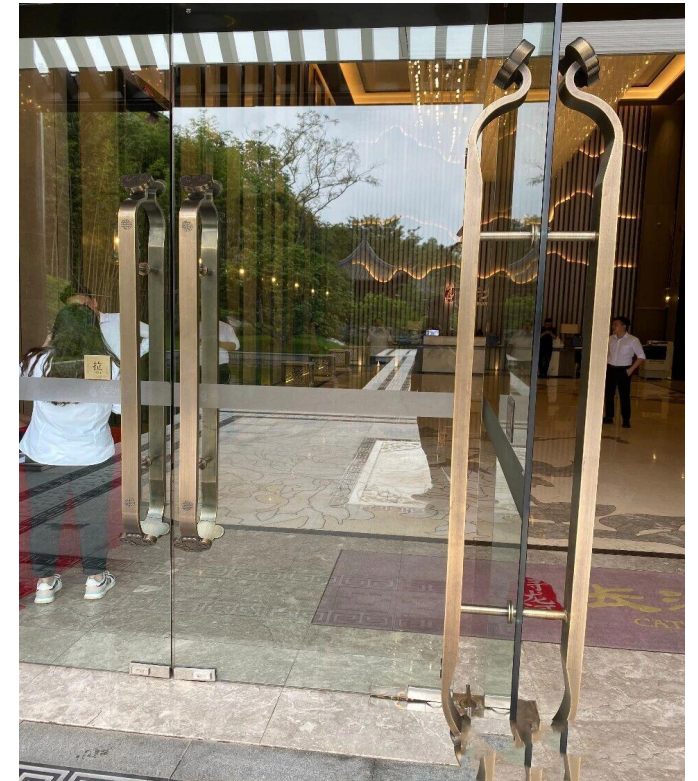
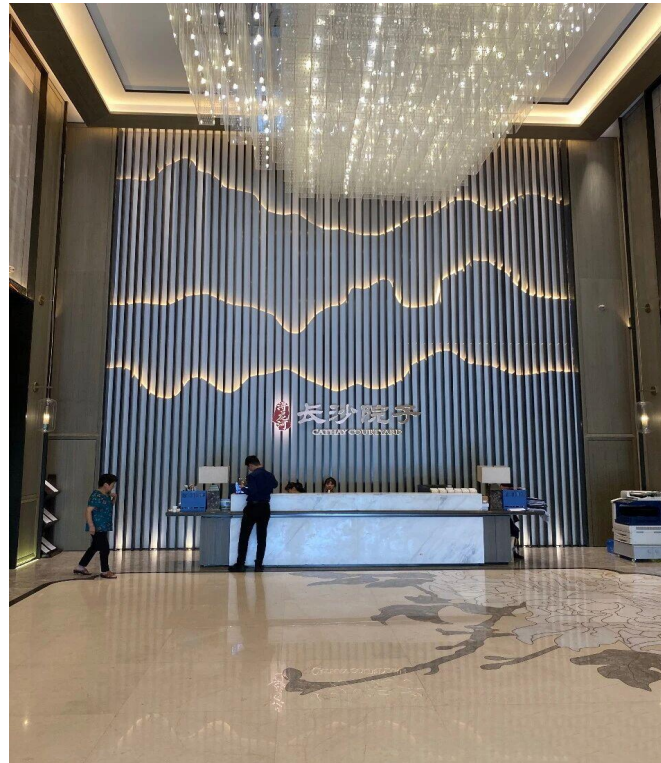
Trusted Engineering, Ultimate Precision

3.Project Case Study: Taihe Changsha Courtyard

- **Location:** Changsha, China
- **Category:** Residential & Mixed-Use Developments
- **Overview:** For this landmark "New Chinese" style development, XYC Metalworks provided a total architectural metalwork solution. The project is a showcase of our ability to blend traditional artisan techniques with modern, precision manufacturing.
- **Key Fabrication:**
 1. **Grand Entrances:** We engineered and fabricated massive, multi-ton custom bronze entrance gates for the main sales center and bespoke villa gates, featuring intricate cast bronze panels and custom-cast handles.
 2. **Artistic Facades:** The exterior scope included laser-cut metal screens, decorative roofing eaves, and large-format bronze relief art panels set into the walls.
 3. **Interior Landmarks:** Inside, we created towering 3D wavy metal wall panels (louver screens) for the reception and a massive suspended art chandelier.
- **Value Delivered:** This project stands as a testament to our mastery of combining traditional techniques (like casting and patination) with high-precision fabrication to deliver a complete, museum-quality solution.



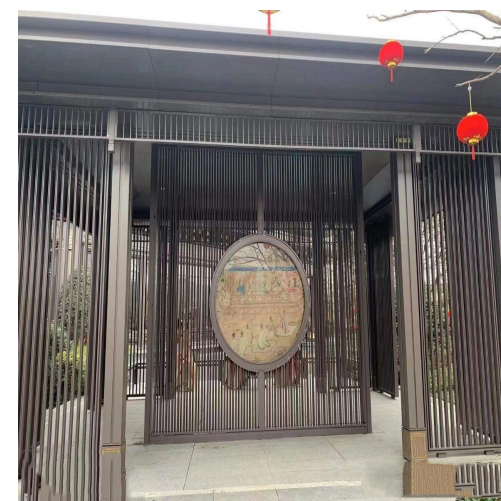
Trusted Engineering, Ultimate Precision



Trusted Engineering, Ultimate Precision

A selection of our completed residential and mixed-use developments includes:

- Haiyuefu Residential Project, Beihai
- Changsha Jinmao & Jianfa Guanyue Residential Project
- Changsha CCCG Jianfa Songya Court Residential Project
- Jiangshan Yue Residential Project, Changsha
- Guizhou Fenggang Guosheng Shuitou Tingyue Mansion Residential
- Zhengda Tianshan Xihu Residential Project, Aksu
- Jianfa Central Mansion Residential Project, Yiyang
- Suibao Yipin Residential Project, Shenzhen
- Xinghe Dandi Residential Project, Huizhou
- Huifang Yanguilai Residential Project, Hengyang
- C&D Cathay Manor Residential Project, Changsha
- C&D Jiuzhou Hexi Residential Project, Changsha
- Ruisheng Golden Coast Residential Project, Fuding, Ningde
- Yuziwan Ecological Tourism Resort Residential Project, Yiyang
- C&D Jiuzhou Guanlan Residential Project, Changsha
- Dianjian Longyue Chang'an Residential Project, Changsha
- Heda Junshan Residential Project, Qingdao
- Heda Heshan Residential Project, Qingdao
- Taihe Changsha Courtyard Residential Project, Changsha
- C&D Yangyun Residential Project, Changsha
- Hengrui Times Residential Project, Weihai
- Lok Wo Sha Project Phase 5, HK
- The Hongkong Polytechnic University's Dormitory
- The University of Hong Kong
- Country Garden Nanhai Yuecheng Residential Project, Foshan
- Country Garden Yunyue Jinsha Residential Project, Foshan
- China Overseas Yuexi Mansion Residential Project, Changsha
- Shanghai Tai'an Tang Sales Center Project
- Henglong Times Residential Project, Weihai
- Dongguan Songshan Lake Glass House Project
- The Summit by Hopson, Jiangmen
- X-TIMES RESIDENCE
- Mingsheng Yicheng Project, Changsha
- Hongrui Yipin Residential Project, Zhongshan
- Guan Yue Sales Center Project, Changsha
- Hengrong Shijia Residential Project, Weihai
- Hengrong Times Residential Project, Weihai
- Luoniushan Jiuyuetai Residential Project, Haikou
- Heyue Jiuzhang Residential Project
- Hongyu Chonglin Huahai Residential Project

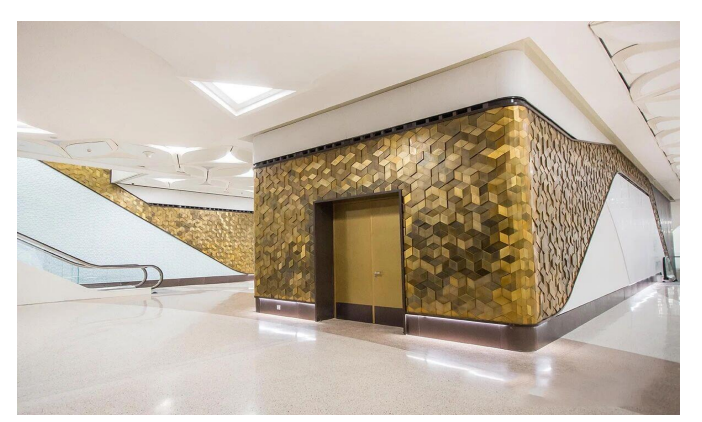
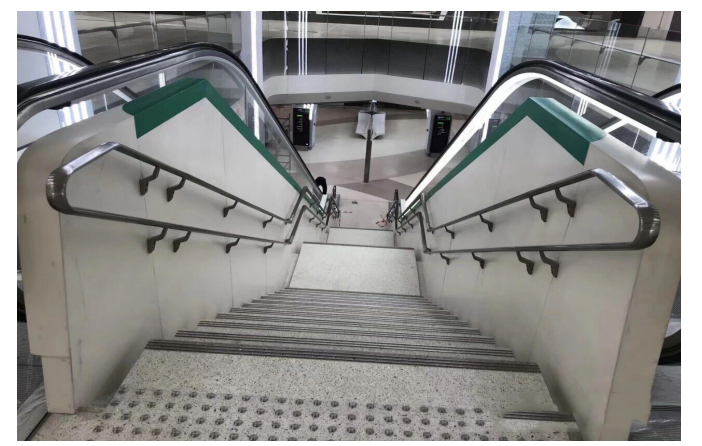
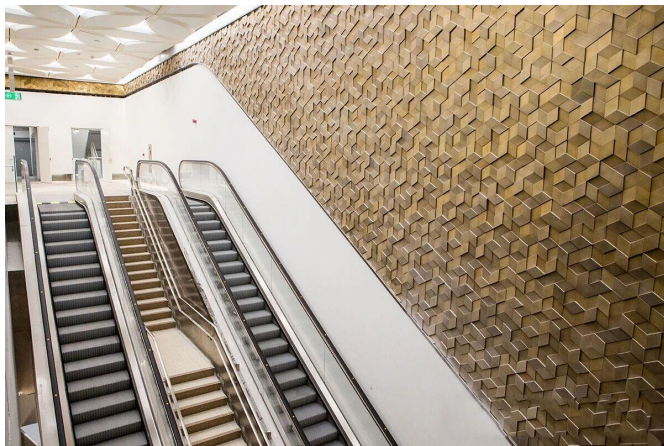
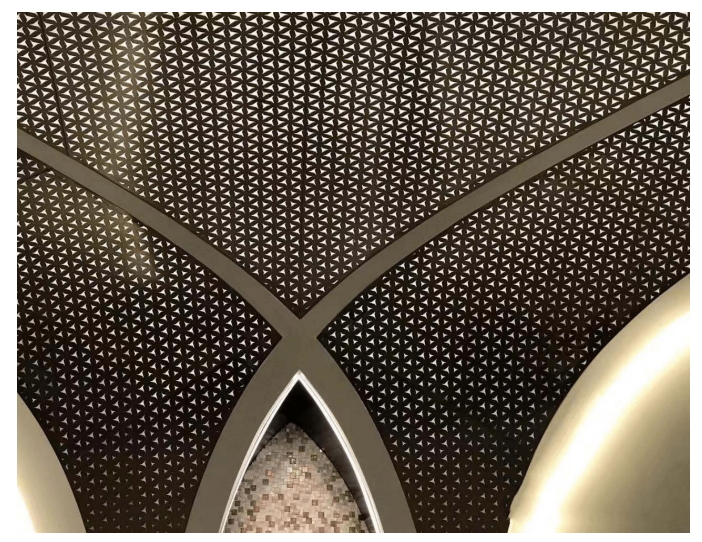
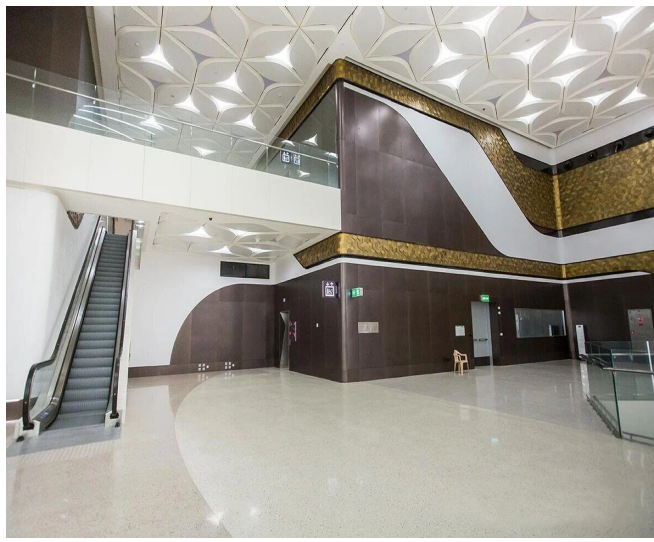
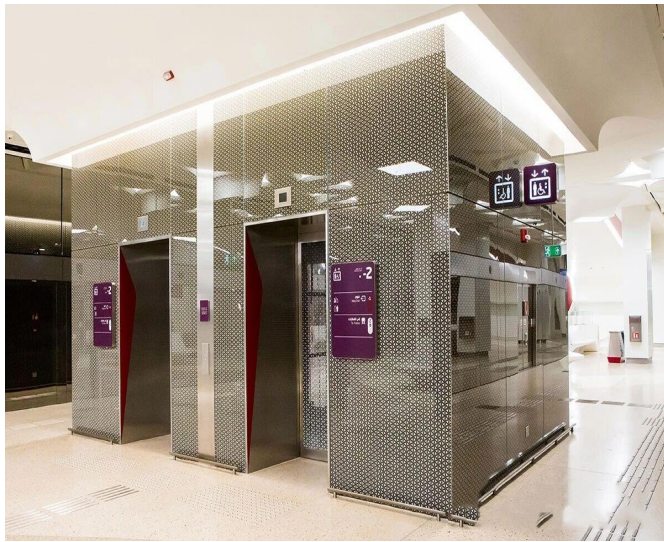


三. Transportation (Metro & Airport)

1. Project Case Study: Doha Metro

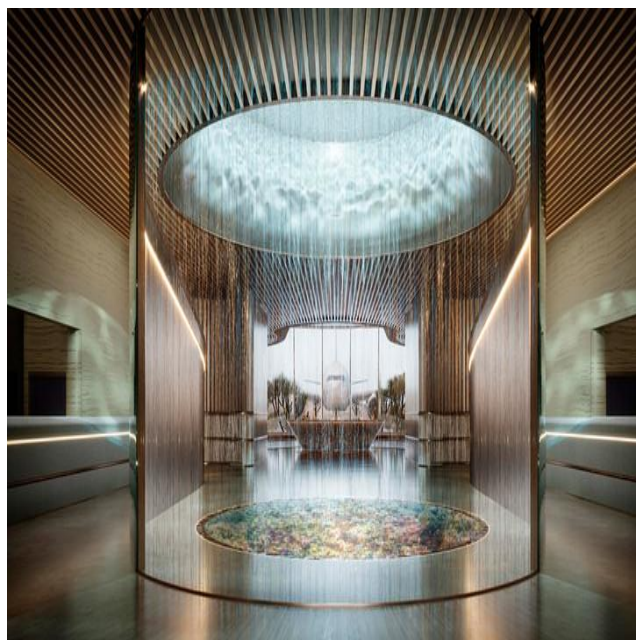
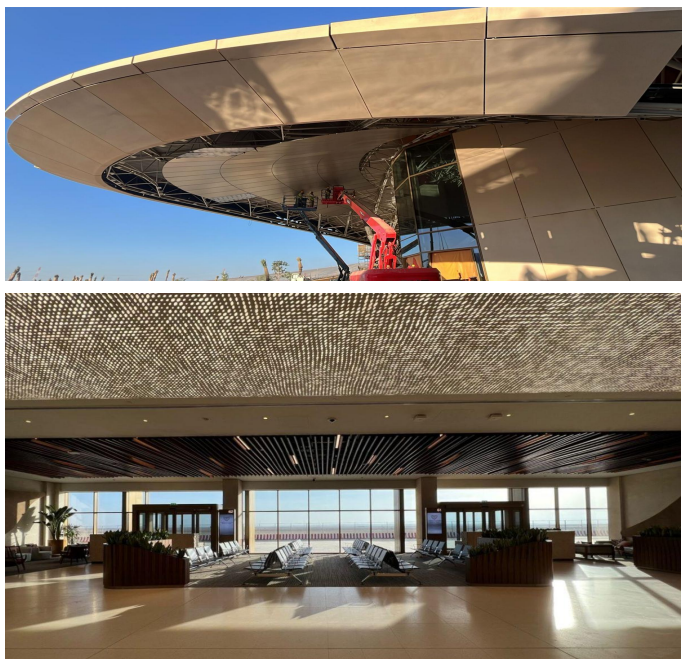
- **Location:** Doha, Qatar
- **Category:** Transportation (Metro System)
- **Overview:** As one of the world's most advanced public transport systems, the Doha Metro required components of extraordinary precision and durability. XYC Metalworks was a key supplier, fabricating bespoke architectural metal products that define the stations' signature "vaulted spaces" inspired by traditional Bedouin tents.
- **Key Fabrication:**
 1. **Iconic 3D Cladding:** We manufactured the project's most iconic feature—custom **3D tessellated metal wall panels** in PVD Gold and Bronze finishes, covering vast expanses of the station interiors.
 2. **Ceilings & Archways:** The scope included intricate **perforated metal ceiling panels** with geometric patterns and curved metal archways that define the modern Islamic aesthetic.
 3. **Metro Car Components:** Uniquely, our work extended into the trains themselves. We manufactured **high-polish stainless steel grab poles** and handrails essential for passenger safety.
- **Value Delivered:** This project showcases our capability to execute complex, large-scale architectural metal contracts for the world's most demanding infrastructure projects, meeting stringent standards for both luxury finishes and high-traffic durability.





2. Project Case Study: Red Sea International Airport

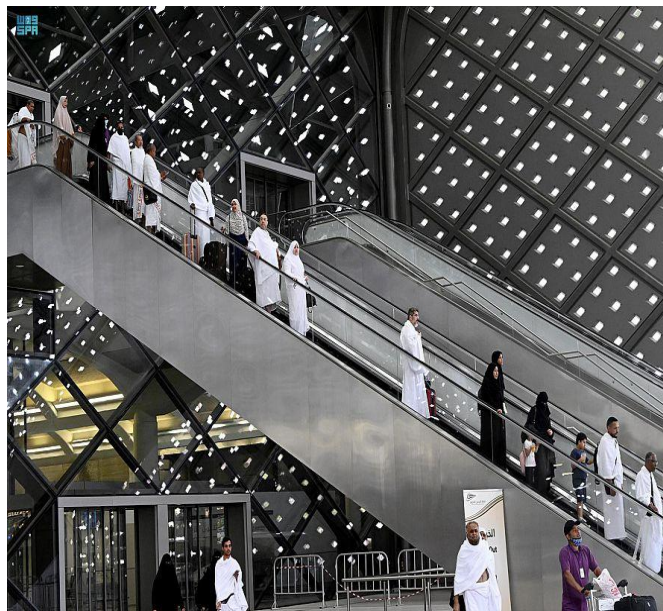
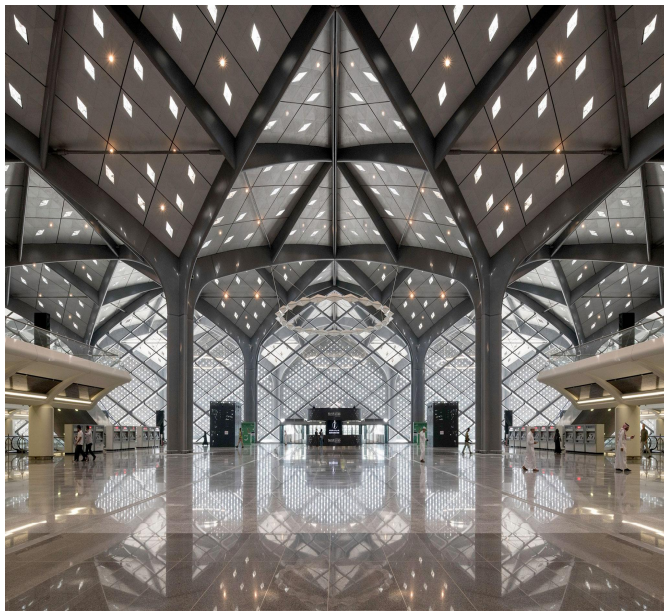
- **Location:** Saudi Arabia
- **Category:** Transportation (International Airport)
- **Overview:** Designed as the gateway to one of the world's most exclusive sustainable tourism destinations, this airport's architecture is inspired by the organic forms of the desert landscape. XYC Metalworks was selected to manufacture critical architectural metal systems, achieving the precise tolerances required for its complex, flowing design.
- **Key Fabrication:**
 1. **Complex Curved Roofing:** We fabricated the signature **3mm aluminum roof cladding and exterior ceiling panels**. This scope involved manufacturing highly complex single and double-curved panels to form the airport's sweeping canopy and eaves.
 2. **Acoustic Oasis Ceilings:** For the interiors, we produced **2.5mm perforated aluminum ceiling panels**. With a precise 1.5mm micro-perforation, these panels create a dappled light effect mimicking a desert oasis while delivering superior acoustic performance.
 3. **Luxury Stainless Elements:** The scope also included bespoke **2mm stainless steel trough panels** used for vertical decorative features and baffle ceilings in key passenger lounges.
- **Value Delivered:** By mastering the fabrication of organic, non-linear forms, we helped translate a visionary, eco-conscious architectural concept into a tangible, high-performance reality.



Trusted Engineering, Ultimate Precision

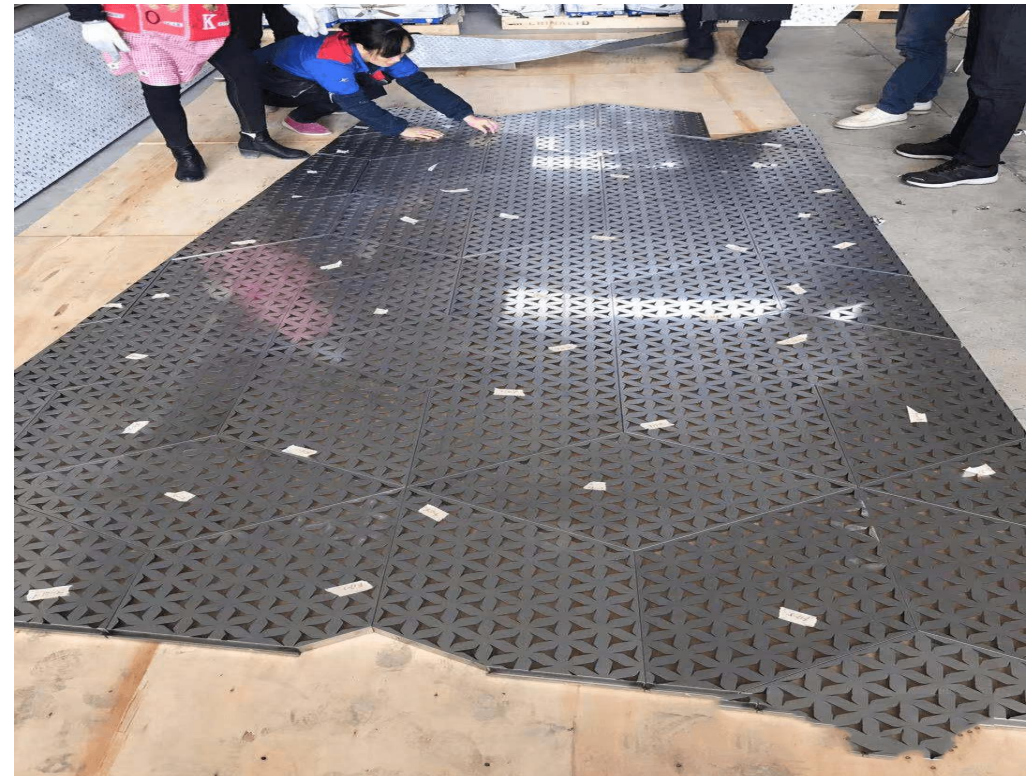
3.Project Case Study: Haramain High-Speed Railway

- **Location:** Saudi Arabia (Connecting Mecca & Medina)
- **Category:** Transportation (High-Speed Rail Network)
- **Overview:** Designed by **Foster + Partners**, these stations are among the world's most architecturally significant transport hubs, drawing inspiration from traditional Islamic vaults. XYC Metalworks played a crucial role in realizing this vision, fabricating monumental architectural components that define the passenger experience.
- **Key Fabrication:**
 1. **Monumental Column Cladding:** We manufactured the custom metal cladding for the station's defining **massive "Y-columns,"** achieving a pristine dark-bronze finish that flows seamlessly from floor to vaulted ceiling.
 2. **Tessellated Ceiling Systems:** Production of the intricate, diamond-shaped perforated metal panels that cover the grand concourses, essential for both acoustics and the station's modern aesthetic.
 3. **High-Traffic Cladding:** Supplied extensive brushed stainless steel cladding for escalators and moving walkways, alongside decorative mullion covers for the massive exterior glass curtain walls.
- **Value Delivered:** This project demonstrates our capacity to execute metal fabrication on a monumental scale, meeting the exacting precision required for vast, repeating structural forms in a world-class infrastructure project.



Selected Transportation Infrastructure Projects:

- Doha Metro Project, Qatar
- Haramain High-Speed Railway Project, Saudi Arabia
- Red Sea International Airport Project, Saudi Arabia
- Jeddah High-Speed Railway Station Project
- HZMB – Hong Kong–Zhuhai–Macao Bridge
- HK Metro – Lantau and Airport Railway (Nam Cheong Station and West Kowloon Terminus)
- King Abdulaziz International Airport
- Singapore Airport
- Ningbo Railway Station (Metro Station)
- HKU Subway Station, HK



Trusted Engineering, Ultimate Precision

四. Office, Commercial & Retail Spaces

1. Project Case Study: National Bank of Kuwait (NBK) HQ

- **Location:** Kuwait
- **Category:** Commercial & Office Towers
- **Overview:** This architectural icon, designed by Foster + Partners, required a vast range of high-finish decorative metal components. XYC Metalworks was a key supplier, entrusted with fabricating and delivering thousands of complex components to world-class tolerances.
- **Key Fabrication:**
 1. **Iconic Exterior Facades:** Fabricated the large-scale vertical louver screens and complex, curved stainless steel beams for the main entrance canopy.
 2. **Grand Atrium Features:** Produced the massive, curved metal-clad "ribs" finished in a warm bronze/wood tone, creating a dramatic, cathedral-like atmosphere within the grand atrium.
 3. **Precision Cladding:** Manufactured large-diameter, mirror-finish stainless steel column cladding, requiring extensive factory prototyping for perfect curvature and seamless joints.
 4. **Decorative Accents:** Supplied intricate decorative metal screens in PVD gold and brushed bronze finishes, alongside sleek stainless steel handrail systems for the grand staircases.
- **Value Delivered:** This project demonstrates our capacity to execute monumental architectural visions, meeting the demanding standards of a world-class landmark with bespoke metalwork.

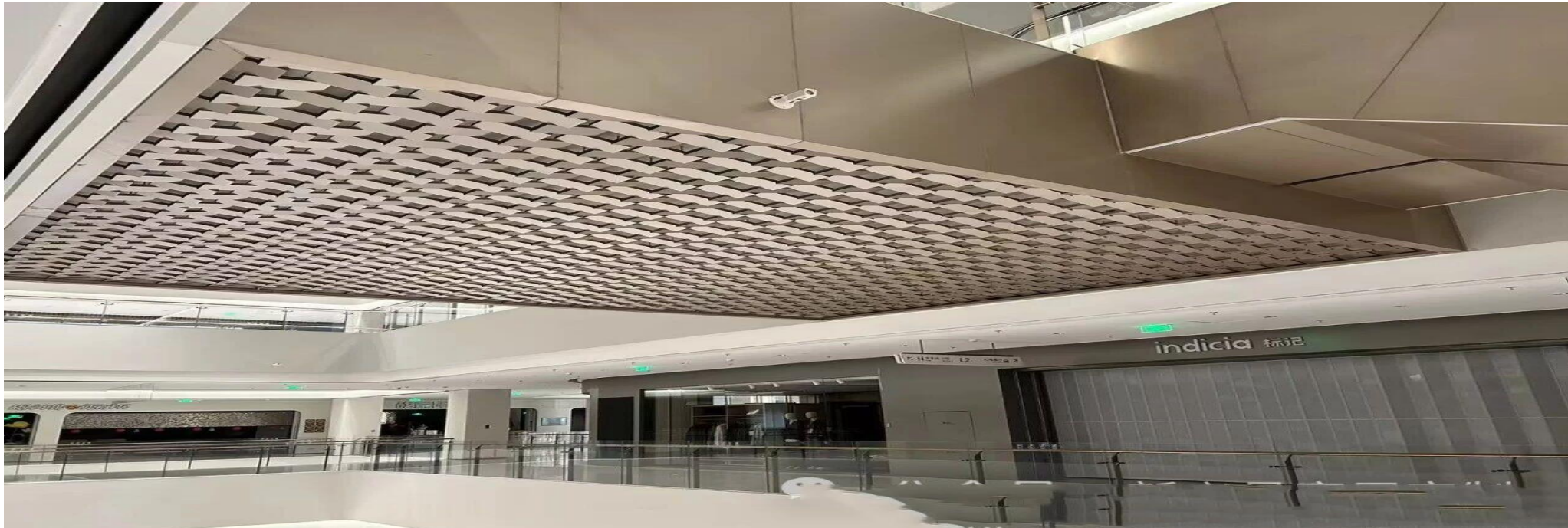


Trusted Engineering, Ultimate Precision

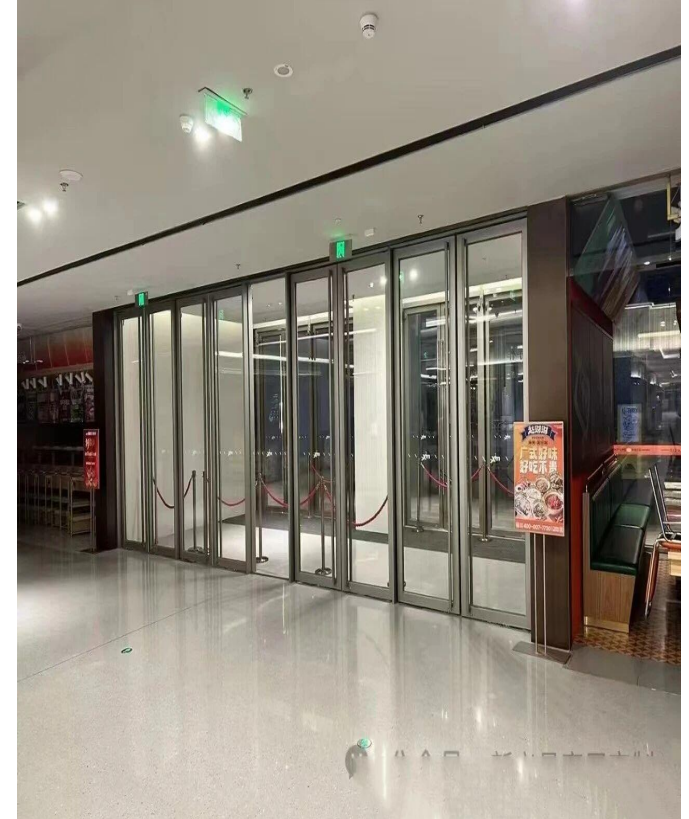
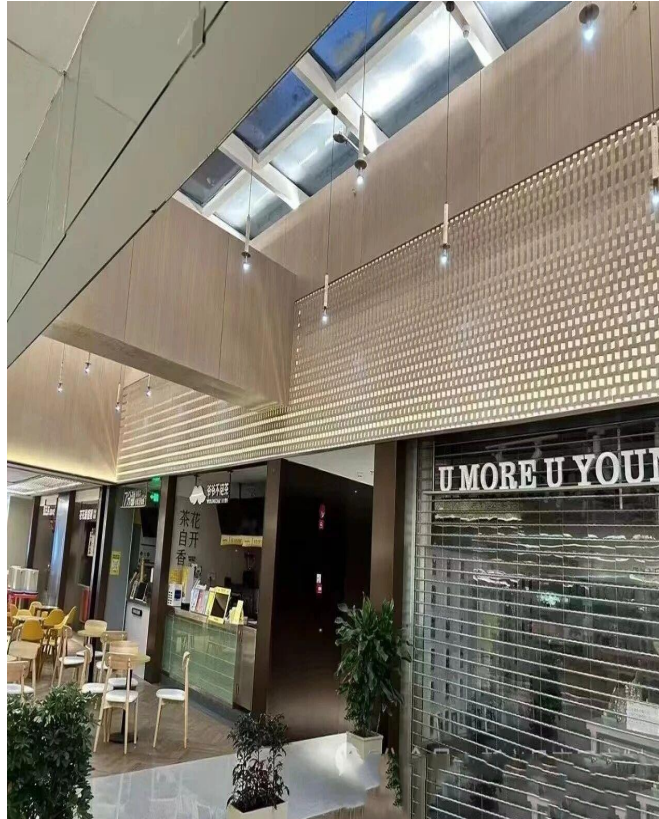
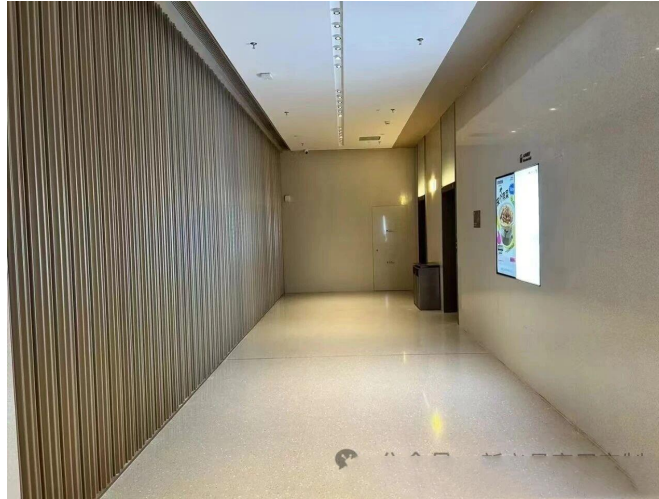


2. Project Case Study: MixC World Plaza

- **Location:** Nanchang, China
- **Category:** Commercial & Retail Hub
- **Overview:** Inspired by local heritage and the concept of "weaving," this premier commercial hub required a vast and diverse range of custom metalwork. Our company was a primary supplier, fabricating and delivering thousands of metal components across the entire facility.
- **Key Fabrication:**
 1. **Iconic Centerpiece:** Fabricated the massive **3D woven metal ceiling** in the main atrium, consisting of hundreds of interlocking aluminum components to form a complex, flowing art installation.
 2. **Public Safety & Flow:** Supplied complete stainless steel and glass **balustrade systems** for all the mall's curved, multi-story atriums.
 3. **Interior Fit-Out:** Produced the full fit-out for elevator lobbies (bronze PVD doors and textured panels) , high-end **restroom partitions** (floor-to-ceiling brushed stainless steel) , and various retail elements.
 4. **Bespoke Fixtures:** Manufactured custom tiered metal planters and large-scale outdoor public art installations that enhance the plaza's appeal.
- **Value Delivered:** This project demonstrates our comprehensive capability in large-scale retail fabrication, spanning monumental public art to high-traffic functional interior elements



Trusted Engineering, Ultimate Precision



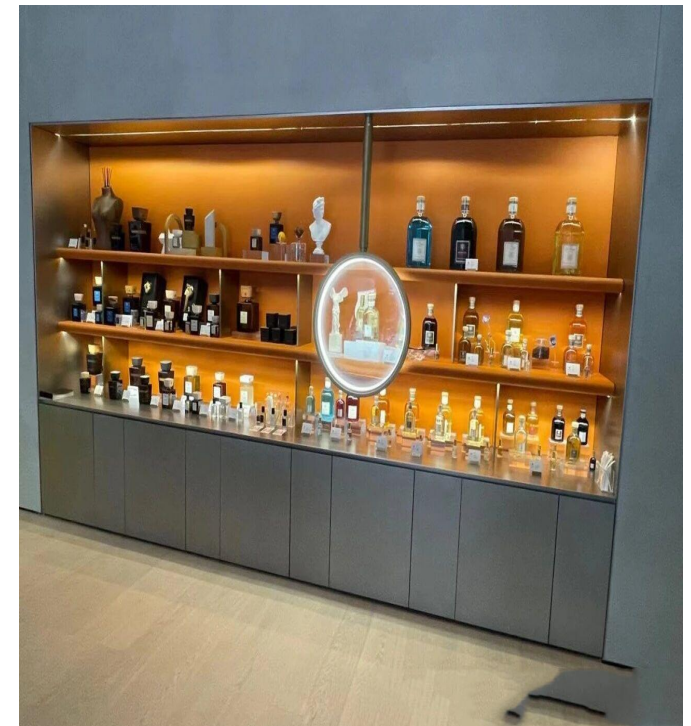
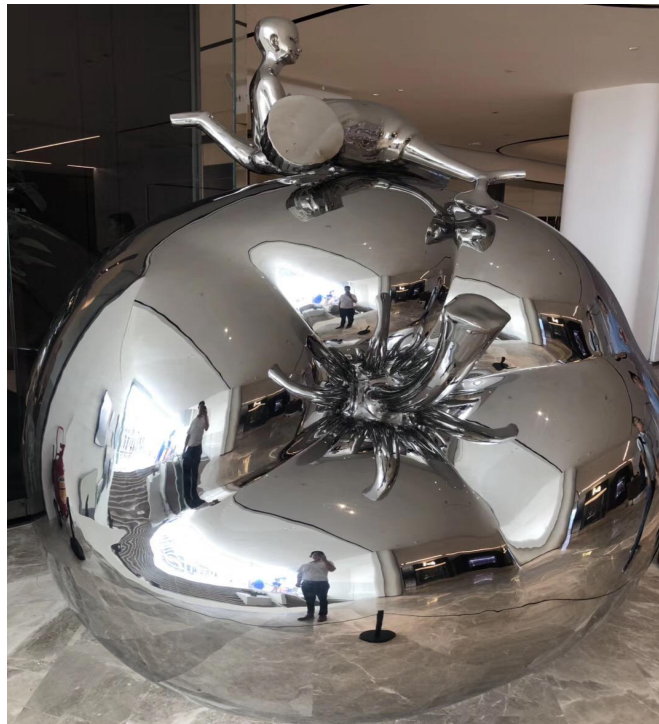
Trusted Engineering, Ultimate Precision

3. Project Case Study: Louvre Jiaoji Pavilion

- **Location:** Guangzhou, China
- **Category:** Commercial & Retail (Luxury Art & Furnishings)
- **Overview:** This premier retail destination required a vast array of custom metal fixtures manufactured to a **flawless, high-end furniture-grade standard**. Our company was the comprehensive metalwork partner, supplying everything from monumental exterior art to the finest interior display counters.
- **Key Fabrication:**
 1. **Iconic Exterior Facade:** Fabricated the unique "**kinetic**" **facade**, a large-scale screen composed of thousands of free-moving, reflective stainless steel discs that shimmer with the wind, integrated with PVD gold signage.
 2. **Retail Centerpieces:** Manufactured all major **curved metal display counters and islands** using complex formed aluminum and stainless steel panels with matte, brushed, and PVD gold finishes.
 3. **Sculptural Art:** Produced the large-scale **mirror-polished stainless steel sculpture** centerpiece in the atrium, showcasing expertise in complex 3D forming and seamless finishing.
 4. **Architectural Fixtures:** Fabricated curved bronze-finish planters, matching reception desks, decorative ceiling screens, and custom stainless steel retail shelving.
- **Value Delivered:** This project demonstrates our capability to meet "furniture-grade" quality standards on an architectural scale, creating a fully integrated and luxurious retail environment.

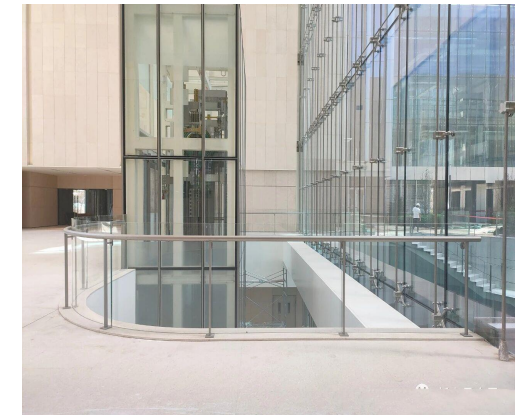
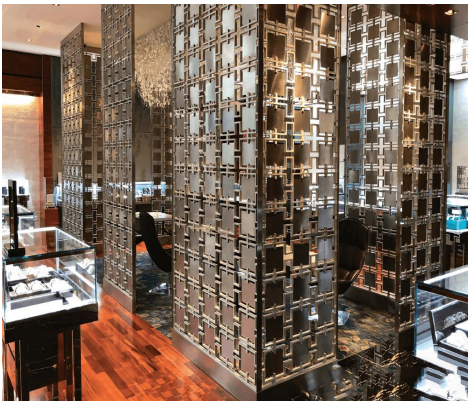


Trusted Engineering, Ultimate Precision

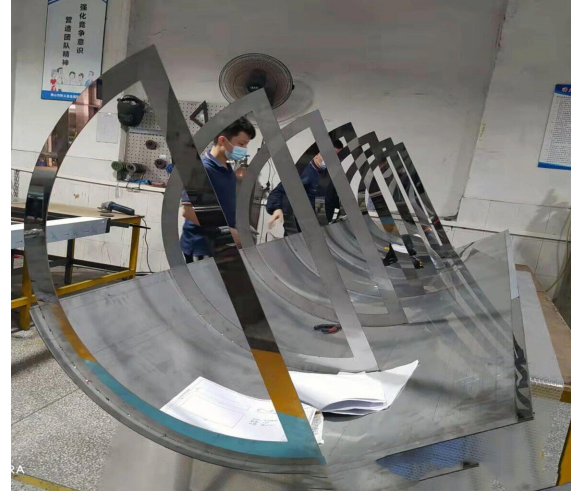
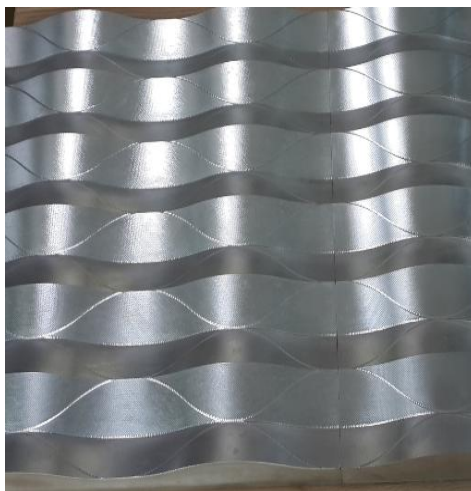
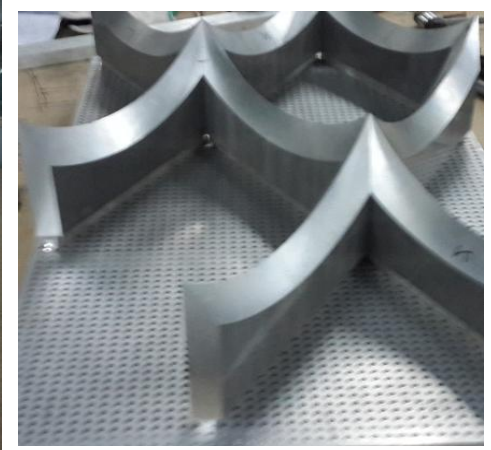
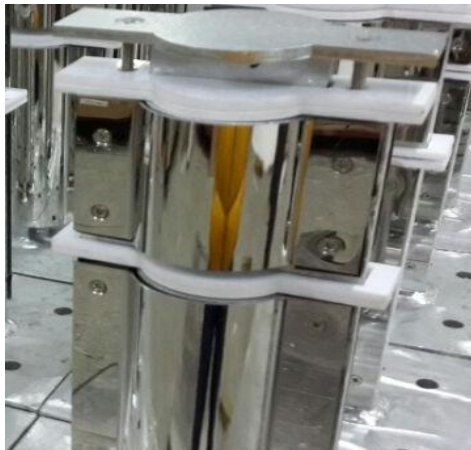
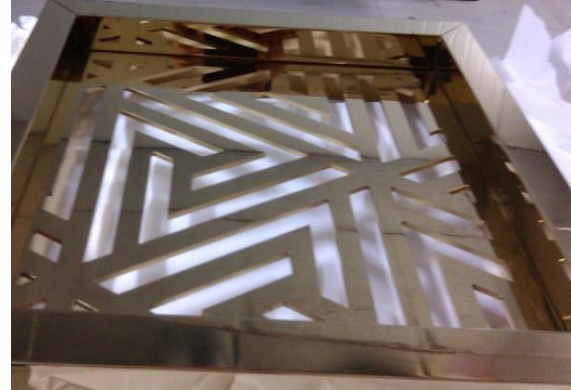


A selection of our completed Office, Commercial, and Retail projects includes:

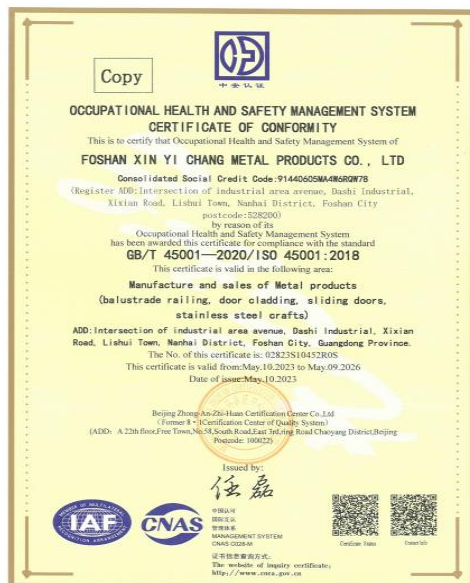
- National Bank of Kuwait Headquarters Building Project
- Sanya International Duty-Free Shopping Complex Project
- Saudi Government Building Project
- GOME Tower Project, Guangzhou
- Masjid al-Haram (The Grand Mosque of Mecca) Project
- Huawei Dongguan Headquarters Project
- Huawei Shanghai Office Project
- CRM Tower - China Railway Materials (CRM) Building
- The Genghis Khan Museum of Inner Mongolia
- Yingxin Commercial Plaza Project, Gaoming, Foshan
- Wangfujing Ziwei Plaza Project, Foshan
- Louvre Jiaoji Pavilion Project, Guangzhou
- Kweichow Moutai Exclusive Store Project
- Jialing Cliff Resort & Club Project
- VERSACE Luxury Boutique Project
- MixC World Plaza Project, Nanchang
- Louvre Project, Guangzhou
- Zhuhai Karaoke Lounge / Karaoke Bar
- Puyue Restaurant Fit-out Project, Guangzhou
- "The Hand of Justice and Integrity" — Putrajaya, Malaysia's Federal Administrative Capital
- Yingsheng KTV Club Project, Zhuhai
- Yanan Club, Shanxi
- Shenzhen Finance & Culture Center Project
- Bally
- Barneys store NY
- Belstaff Visual Tools
- Bvlgari
- Cartier Nanjing
- Chanel Lee Garden HK
- Chanel Prince's Building
- DIOR Lee Garden HK
- Ferragamo Jinan Guihe
- MK Shanghai Flagship
- GUCCI Wynn Macau
- LV QGF GERMANY
- LV Brisbane (more than 10 LV store globally)
- Ferragamo Pavillion KL, Malaysia
- Cartier Emporium Bangkok
- Tiffany HK
- Diesel Store Shanghai
- Hermes Beijing
- Fila store decoration etc



Trusted Engineering, Ultimate Precision



Approvals





Certificate of Patent

证书号第15495404号

实用新型专利证书

实用新型名称：一种不锈钢管的焊接装置

发 明 人：刘义虎

专 利 号：ZL 2021 2 2061063.6

专利申请日：2021年08月30日

专 利 权 人：佛山市新义昌金属制品有限公司

地 址：528000 广东省佛山市南海区里水镇西线公路大石村工业区大道路口交界处

授权公告日：2022年01月14日 授权公告号：CN 215509628 U

国家知识产权局依照中华人民共和国专利法经过初步审查，决定授予专利权，颁发实用新型专利证书并在专利登记簿上予以登记。专利权自授权公告之日起生效。专利权期限为十年，自申请日起算。

专利证书记载专利权登记时的法律状况。专利权的转移、质押、无效、终止、恢复和专利权的姓名或名称、国籍、地址变更等事项记载在专利登记簿上。

局长 申长雨

2022年01月14日

第1页(共2页)

证书号第12308706号

实用新型专利证书

实用新型名称：一种不锈钢板桩柱用固定机构

发 明 人：刘义虎

专 利 号：ZL 2020 2 1187751.6

专利申请日：2020年06月24日

专 利 权 人：佛山市新义昌金属制品有限公司

地 址：528000 广东省佛山市南海区里水镇西线公路大石村工业区大道路口交界处

授权公告日：2021年01月22日 授权公告号：CN 212384796 U

国家知识产权局依照中华人民共和国专利法经过初步审查，决定授予专利权，颁发实用新型专利证书并在专利登记簿上予以登记。专利权自授权公告之日起生效。专利权期限为十年，自申请日起算。

专利证书记载专利权登记时的法律状况。专利权的转移、质押、无效、终止、恢复和专利权的姓名或名称、国籍、地址变更等事项记载在专利登记簿上。

局长 申长雨

2021年01月22日

第1页(共2页)

证书号第18734013号

实用新型专利证书

实用新型名称：一种不锈钢管侧角抛光设备

发 明 人：刘义虎

专 利 号：ZL 2021 2 2061091.8

专利申请日：2021年08月30日

专 利 权 人：佛山市新义昌金属制品有限公司

地 址：528000 广东省佛山市南海区里水镇西线公路大石村工业区大道路口交界处

授权公告日：2022年02月08日 授权公告号：CN 215748271 U

国家知识产权局依照中华人民共和国专利法经过初步审查，决定授予专利权，颁发实用新型专利证书并在专利登记簿上予以登记。专利权自授权公告之日起生效。专利权期限为十年，自申请日起算。

专利证书记载专利权登记时的法律状况。专利权的转移、质押、无效、终止、恢复和专利权的姓名或名称、国籍、地址变更等事项记载在专利登记簿上。

局长 申长雨

2022年02月08日

第1页(共2页)

证书号第12418918号

实用新型专利证书

实用新型名称：一种大型板村自动抛光机

发 明 人：刘义虎

专 利 号：ZL 2020 2 1188617.8

专利申请日：2020年06月24日

专 利 权 人：佛山市新义昌金属制品有限公司

地 址：528000 广东省佛山市南海区里水镇西线公路大石村工业区大道路口交界处

授权公告日：2021年01月29日 授权公告号：CN 212420785 U

国家知识产权局依照中华人民共和国专利法经过初步审查，决定授予专利权，颁发实用新型专利证书并在专利登记簿上予以登记。专利权自授权公告之日起生效。专利权期限为十年，自申请日起算。

专利证书记载专利权登记时的法律状况。专利权的转移、质押、无效、终止、恢复和专利权的姓名或名称、国籍、地址变更等事项记载在专利登记簿上。

局长 申长雨

2021年01月29日

第1页(共2页)

证书号第15513809号

实用新型专利证书

实用新型名称：一种不锈钢拉丝工作的打磨机构

发 明 人：刘义虎

专 利 号：ZL 2021 2 2062655.X

专利申请日：2021年08月30日

专 利 权 人：佛山市新义昌金属制品有限公司

地 址：528000 广东省佛山市南海区里水镇西线公路大石村工业区大道路口交界处

授权公告日：2022年01月14日 授权公告号：CN 215510424 U

国家知识产权局依照中华人民共和国专利法经过初步审查，决定授予专利权，颁发实用新型专利证书并在专利登记簿上予以登记。专利权自授权公告之日起生效。专利权期限为十年，自申请日起算。

专利证书记载专利权登记时的法律状况。专利权的转移、质押、无效、终止、恢复和专利权的姓名或名称、国籍、地址变更等事项记载在专利登记簿上。

局长 申长雨

2022年01月14日

第1页(共2页)

证书号第15410090号

实用新型专利证书

实用新型名称：一种用于不锈钢带切割机的定位机构

发 明 人：刘义虎

专 利 号：ZL 2021 2 2244365.8

专利申请日：2021年09月16日

专 利 权 人：佛山市新义昌金属制品有限公司

地 址：528000 广东省佛山市南海区里水镇西线公路大石村工业区大道路口交界处

授权公告日：2022年01月11日 授权公告号：CN 215468456 U

国家知识产权局依照中华人民共和国专利法经过初步审查，决定授予专利权，颁发实用新型专利证书并在专利登记簿上予以登记。专利权自授权公告之日起生效。专利权期限为十年，自申请日起算。

专利证书记载专利权登记时的法律状况。专利权的转移、质押、无效、终止、恢复和专利权的姓名或名称、国籍、地址变更等事项记载在专利登记簿上。

局长 申长雨

2022年01月11日

第1页(共2页)

证书号第10732389号

实用新型专利证书

实用新型名称：一种线型直角金属门套

发 明 人：刘义虎

专 利 号：ZL 2019 2 1358267.2

专利申请日：2019年08月21日

专 利 权 人：佛山市新义昌金属制品有限公司

地 址：528244 广东省佛山市南海区里水镇西线公路大石村工业区大道路口交界处

授权公告日：2020年06月16日 授权公告号：CN 210768361 U

国家知识产权局依照中华人民共和国专利法经过初步审查，决定授予专利权，颁发实用新型专利证书并在专利登记簿上予以登记。专利权自授权公告之日起生效。专利权期限为十年，自申请日起算。

专利证书记载专利权登记时的法律状况。专利权的转移、质押、无效、终止、恢复和专利权的姓名或名称、国籍、地址变更等事项记载在专利登记簿上。

局长 申长雨

2020年06月16日

第1页(共2页)

证书号第12371820号

实用新型专利证书

实用新型名称：一种高压快冷制备金属材料装置

发 明 人：刘义虎

专 利 号：ZL 2020 2 1188616.3

专利申请日：2020年06月24日

专 利 权 人：佛山市新义昌金属制品有限公司

地 址：528000 广东省佛山市南海区里水镇西线公路大石村工业区大道路口交界处

授权公告日：2021年01月22日 授权公告号：CN 212384570 U

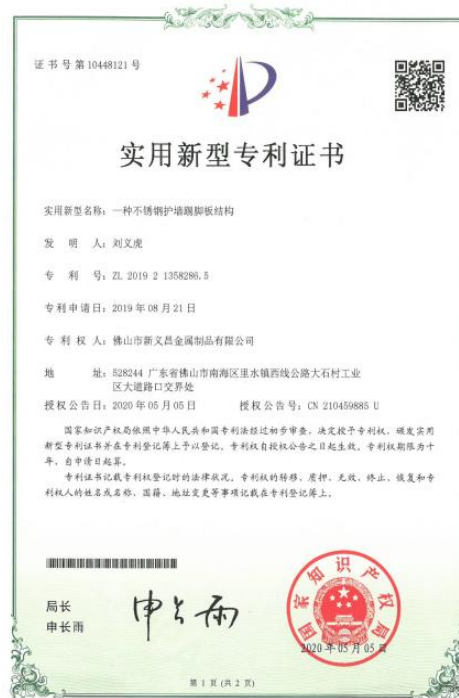
国家知识产权局依照中华人民共和国专利法经过初步审查，决定授予专利权，颁发实用新型专利证书并在专利登记簿上予以登记。专利权自授权公告之日起生效。专利权期限为十年，自申请日起算。

专利证书记载专利权登记时的法律状况。专利权的转移、质押、无效、终止、恢复和专利权的姓名或名称、国籍、地址变更等事项记载在专利登记簿上。

局长 申长雨

2021年01月22日

第1页(共2页)





XYC Metalworks

Trusted Engineering, Ultimate Precision

Ready to build your next landmark? Contact the expert team at XYC Metalworks to discuss your project requirements or request a detailed quotation. Contact us at:

Tel: 0086 18923114885

E-mail: sales@metalworks-solutions.com

www.metalworks-solutions.com